



# NORMA® First-Aid Repair Clamp

## Description

The NORMA® First-Aid Repair Clamp is suitable for the repair of damages on all kinds of pipes, transporting liquid media and non flammable gases up to 115 °C.

## Advantages at a glance:

**Quick Installation** – Minimizes down time for damaged water pipes and pressurized mains

**Durable Materials** – Corrosion-resistant stainless steel with full circle EPDM rubber gasket

**Versatile Fittings** – Sophisticated design ensures that each size can securely seal a range of pipe sizes and materials

**Economical** – Faster and more cost-effective than replacing entire sections of pipe immediately

**Certifications:** Pressure tested according to DVGW W336 norms, EPDM gasket according to DIN EN 681.1 standard, gasket tested according to European Elastomer specification (former KTW and W270 standard).



## Applications:

For repairs of cracks, holes, splits, pin holes etc. in all kinds of steel, cast iron, copper, plastic and concrete pipes.



Industrial plant



Water treatment



Civil engineering

### Did you know:

The NORMACONNECT® FGR range is the ideal solution to replace pipe segments permanently with minimum down time and no welding.

[www.normagroup.com/corp/en/NORMA-GRIP-GRIP-E/](http://www.normagroup.com/corp/en/NORMA-GRIP-GRIP-E/)

## Installation notice:

CAUTION: The NORMA® First-Aid Repair Clamp is not to be used to connect pipes.

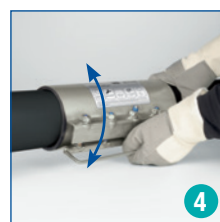
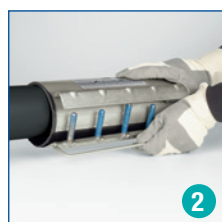
General notes:

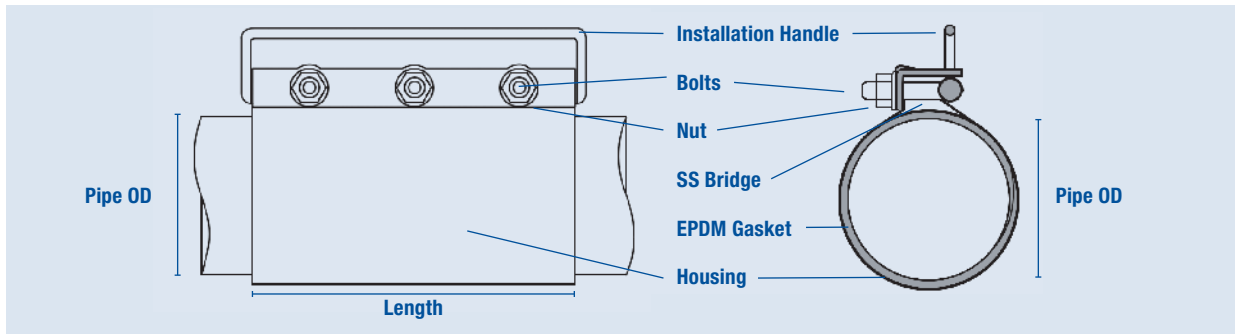
While choosing the length of the clamp, please make sure the clamp overlaps the repair area at least 20 mm on each side.

The NORMA® First-Aid Repair Clamp is only intended to be used for a temporary repair. Maximum angular deflection of damaged pieces 7°.  
Always wear safety gloves during installation.

For fast and easy installation, we recommend the use of long wrench sockets.

- Clean the pipe. It should be dry, clean and degreased.
- Remove nuts and washers and place the clamp on the pipe (Picture 1 and 2).
- First tighten the nut on the longest bolt in order to be able to fasten the nuts on the shorter bolts (Picture 3).
- Before tightening the nuts fully, rotate the clamp to evenly adjust the seal. (Picture 4).  
To ensure tightness, there should be no wrinkles or waves on the rubber seal.
- Gradually tighten all nuts evenly to a max. torque of 100Nm (M12)/130Nm M(16) (Picture 5).
- Carry out a leakage test by putting the pipe under pressure while it is still accessible.





| Designation                  | Clamping range [mm] | Length [mm] | PN [bar] | Bolt diameter | Max. tightening torque [Nm] | Weight [kg] | Product no.   |
|------------------------------|---------------------|-------------|----------|---------------|-----------------------------|-------------|---------------|
| First-Aid Repair Clamp K-63  | 59–70               | 100         | 16       | M12 SW19      | 100                         | 0.8         | 0572 2211 063 |
| First-Aid Repair Clamp M-63  | 59–70               | 200         | 16       | M12 SW19      | 100                         | 1.6         | 0572 2212 063 |
| First-Aid Repair Clamp K-68  | 63–72               | 100         | 16       | M12 SW19      | 100                         | 0.8         | 0572 2211 068 |
| First-Aid Repair Clamp M-68  | 63–72               | 200         | 16       | M12 SW19      | 100                         | 1.7         | 0572 2212 068 |
| First-Aid Repair Clamp K-75  | 70–81               | 100         | 16       | M12 SW19      | 100                         | 0.9         | 0572 2211 075 |
| First-Aid Repair Clamp M-75  | 70–81               | 200         | 16       | M12 SW19      | 100                         | 1.7         | 0572 2212 075 |
| First-Aid Repair Clamp K-82  | 82–91               | 100         | 16       | M12 SW19      | 100                         | 1.0         | 0572 2211 082 |
| First-Aid Repair Clamp M-82  | 82–91               | 200         | 16       | M12 SW19      | 100                         | 1.8         | 0572 2212 082 |
| First-Aid Repair Clamp K-104 | 104–114             | 100         | 16       | M12 SW19      | 100                         | 1.2         | 0572 2211 104 |
| First-Aid Repair Clamp M-104 | 104–114             | 210         | 16       | M12 SW19      | 100                         | 2.1         | 0572 2212 104 |
| First-Aid Repair Clamp L-104 | 104–114             | 315         | 16       | M12 SW19      | 100                         | 3.4         | 0572 2213 104 |
| First-Aid Repair Clamp K-131 | 128–140             | 200         | 16       | M16 SW24      | 130                         | 2.8         | 0572 2211 131 |
| First-Aid Repair Clamp M-131 | 128–140             | 250         | 16       | M16 SW24      | 130                         | 3.7         | 0572 2212 131 |
| First-Aid Repair Clamp L-131 | 128–140             | 315         | 16       | M16 SW24      | 130                         | 4.7         | 0572 2213 131 |
| First-Aid Repair Clamp K-140 | 138–150             | 200         | 16       | M16 SW24      | 130                         | 3.1         | 0572 2211 140 |
| First-Aid Repair Clamp M-140 | 138–150             | 250         | 16       | M16 SW24      | 130                         | 4.0         | 0572 2212 140 |
| First-Aid Repair Clamp L-140 | 138–150             | 315         | 16       | M16 SW24      | 130                         | 5.0         | 0572 2213 140 |
| First-Aid Repair Clamp K-151 | 150–162             | 200         | 16       | M16 SW24      | 130                         | 3.2         | 0572 2211 151 |
| First-Aid Repair Clamp M-151 | 150–162             | 250         | 16       | M16 SW24      | 130                         | 4.2         | 0572 2212 151 |
| First-Aid Repair Clamp L-151 | 150–162             | 315         | 16       | M16 SW24      | 130                         | 5.2         | 0572 2213 151 |
| First-Aid Repair Clamp K-166 | 163–175             | 200         | 16       | M16 SW24      | 130                         | 3.4         | 0572 2211 166 |
| First-Aid Repair Clamp M-166 | 163–175             | 250         | 16       | M16 SW24      | 130                         | 4.4         | 0572 2212 166 |
| First-Aid Repair Clamp L-166 | 163–175             | 315         | 16       | M16 SW24      | 130                         | 5.4         | 0572 2213 166 |
| First-Aid Repair Clamp K-178 | 178–192             | 200         | 16       | M16 SW24      | 130                         | 3.5         | 0572 2211 178 |
| First-Aid Repair Clamp M-178 | 178–192             | 250         | 16       | M16 SW24      | 130                         | 4.5         | 0572 2212 178 |
| First-Aid Repair Clamp L-178 | 178–192             | 315         | 16       | M16 SW24      | 130                         | 5.6         | 0572 2213 178 |
| First-Aid Repair Clamp K-190 | 191–202             | 200         | 10       | M16 SW24      | 130                         | 3.5         | 0572 2211 190 |
| First-Aid Repair Clamp M-190 | 191–202             | 250         | 10       | M16 SW24      | 130                         | 4.6         | 0572 2212 190 |
| First-Aid Repair Clamp L-190 | 191–202             | 315         | 10       | M16 SW24      | 130                         | 5.8         | 0572 2213 190 |
| First-Aid Repair Clamp M-215 | 215–226             | 250         | 10       | M16 SW24      | 130                         | 4.7         | 0572 2212 215 |
| First-Aid Repair Clamp L-215 | 215–226             | 315         | 10       | M16 SW24      | 130                         | 6.2         | 0572 2213 215 |
| First-Aid Repair Clamp M-225 | 220–230             | 250         | 10       | M16 SW24      | 130                         | 5.2         | 0572 2212 225 |
| First-Aid Repair Clamp L-225 | 220–230             | 315         | 10       | M16 SW24      | 130                         | 6.5         | 0572 2213 225 |
| First-Aid Repair Clamp M-260 | 251–261             | 250         | 10       | M16 SW24      | 130                         | 5.6         | 0572 2212 260 |
| First-Aid Repair Clamp L-260 | 251–261             | 315         | 10       | M16 SW24      | 130                         | 7.0         | 0572 2213 260 |
| First-Aid Repair Clamp M-269 | 269–281             | 250         | 10       | M16 SW24      | 130                         | 5.4         | 0572 2212 269 |
| First-Aid Repair Clamp M-306 | 306–316             | 315         | 10       | M16 SW24      | 130                         | 7.2         | 0572 2212 306 |
| First-Aid Repair Clamp L-306 | 306–316             | 575         | 10       | M16 SW24      | 130                         | 13.1        | 0572 2213 306 |
| First-Aid Repair Clamp M-315 | 314–325             | 315         | 10       | M16 SW24      | 130                         | 7.4         | 0572 2212 315 |
| First-Aid Repair Clamp L-315 | 314–325             | 575         | 10       | M16 SW24      | 130                         | 13.3        | 0572 2213 315 |
| First-Aid Repair Clamp M-345 | 345–357             | 315         | 10       | M16 SW24      | 130                         | 7.8         | 0572 2212 345 |
| First-Aid Repair Clamp L-345 | 345–357             | 575         | 10       | M16 SW24      | 130                         | 14.2        | 0572 2213 345 |
| First-Aid Repair Clamp M-400 | 396–407             | 315         | 10       | M16 SW24      | 130                         | 8.5         | 0572 2212 400 |
| First-Aid Repair Clamp L-400 | 396–407             | 575         | 10       | M16 SW24      | 130                         | 15.5        | 0572 2213 400 |

Material: AISI 304, Material of gasket: EPDM. The maximum tightening torque should not be exceeded. The bolts should be tightened until the leakage is visibly sealed.





Find our full range of NORMACONNECT® couplings and connectors here:  
[www.normagroup.com/corp/en/Infrastructure](http://www.normagroup.com/corp/en/Infrastructure)

**NORMA® Group**  
Postfach 1149 · 63461 Maintal  
Edisonstraße 4 · 63477 Maintal  
Germany  
Phone: +49 (6181) 4 03-0  
Fax: +49 (6181) 4 03-210  
[www.normagroup.com](http://www.normagroup.com)  
[info@normagroup.com](mailto:info@normagroup.com)

This folder supersedes all previous issues. No part of this publication may be reproduced without our prior written consent. In NORMA® Group's policy of continual product improvements to meet user needs and technological developments, all models and sets listed in this folder (photographs, specifications, sizes and weights) may be upgraded or discontinued without notice and without any obligation on our part to modify tools or equipment sold previously. The recommendations for use and safety given in this folder do not replace accepted good practice or the safety related legal and regulatory provisions. References to standards implemented at 01/11/2017 are not contractually binding.