

iQparts
IQ-PARTS-SHOP.COM



**SPECS &
INFORMATION**

Hose Tails – BSP and NPS



TruDesign Tails are moulded from a glass reinforced nylon composite. High strength, high-modulus glass fibers impregnated into the nylon provides dramatic strength, stiffness, toughness, and dimensional stability. TruDesign Tails eliminate the corrosion and electrical bonding problems associated with metallic fittings. The Tails are designed for twin hose clamps, and do not crush under high load conditions.

Key Features:

- Manufactured from a glass reinforced nylon composite for high strength and light weight.
- Immune to corrosion and electrolysis removing the need to replace or check integrity of the fitting.
- Chemically resistant and impervious to diesel, petrol and antifouling paints.
- U.V resistant and will not breakdown or discolour in ultraviolet light.
- High quality surface finish that won't discolour with green film as bronze fittings do.
- Universal compatibility with other Tru design fittings and Ball valves.
- Large operating temperature range, suitable for all marine environments from -40°C to +110°C.

Models

Product - BSP	NON PKG	PKG
Tail 13mm ½" BSP Long Male Thread	90246	90557
Tail 19mm ¾" BSP Long Male Thread	90252	90558
Tail 25mm 1" BSP Long Male Thread	90263	90559
Tail 32mm 1¼" BSP Long Male Thread	90285	90560
Tail 38mm 1½" BSP Long Male Thread	90231	90561
Tail 50mm 2" BSP Long Male Thread	90518	90562
Tail 75mm 3" BSP Long Male Thread	91161	
Tail Unequal 16mm ½" BSP Long Male Thread	90875	90876
Tail Unequal 22mm ¾" BSP Long Male Thread	90879	90880
Tail Unequal 28mm 1" BSP Long Male Thread	90640	90641
Tail Unequal 38mm 1¼" BSP Long Male Thread	90530	90564
Tail Unequal 28mm 1½" BSP Long Male Thread	91301	91302
Tail Unequal 32mm 1½" BSP Long Male Thread	90284	90563
Tail Unequal 64mm 3" BSP Long Male Thread	91162	

Product - NPS	NON PKG	PKG
Hose Barb ½" x ½" NPS Long Male Thread	90726	90767
Hose Barb ¾" x ¾" NPS Long Male Thread	90727	90768
Hose Barb 1" x 1" NPS Long Male Thread	90728	90769
Hose Barb 1¼" x 1¼" NPS Long Male Thread	90729	90770
Hose Barb 1½" x 1½" NPS Long Male Thread	90730	90771
Hose Barb 2" x 2" NPS Long Male Thread	90731	90772
Hose Barb Unequal ⅝" x ½" NPS Long Male Thread	90887	90888
Hose Barb Unequal ⅞" x ¾" NPS Long Male Thread	90889	90890
Hose Barb Unequal 1⅛" x 1" NPS Long Male Thread	90881	90882
Hose Barb Unequal 1½" x 1¼" NPS Long Male Thread	90885	90886
Hose Barb Unequal 1⅞" x 1½" NPS Long Male Thread	91303	91304
Hose Barb Unequal 1¼" x 1½" NPS Long Male Thread	90883	90884
Hose Barb Unequal 1½" x 2" NPS Long Male Thread	91188	91189

Installation:

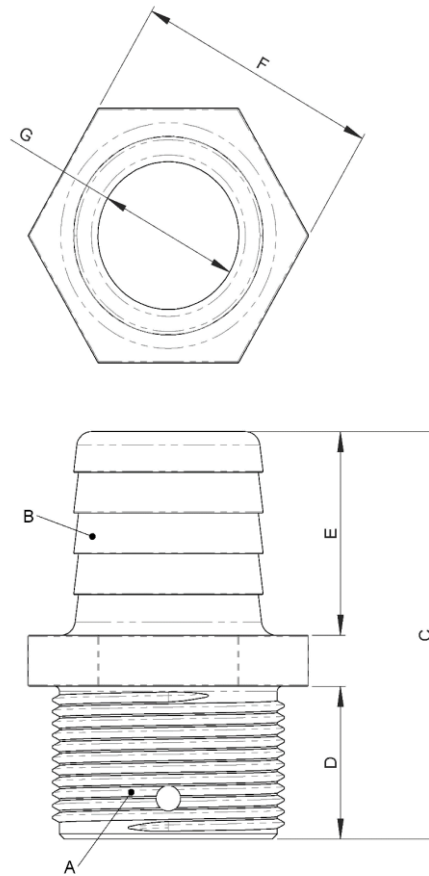
For thread sealing see TruDesign Technical information sheet on our web site www.trudesignplastics.com - for suitable adhesive sealants and or thread tapes.

The connecting thread type are either BSP or NPS and clearly marked on the side of the fitting along with size. The advantage of parallel threads rather than tapered is that there can be maximum engagement between the mating threads providing a stronger connection. Do not over tighten, simply allow the adhesive sealant to provide the seal and orientation of the fitting.

Apply twin hose clamps for a secure hose connection and check tightness regularly.

Dimensions

All dimensions nominal.



A	B		C		D		E		F		G	
Thread Size	Tail Size		Overall Length		Thread Length		Tail Length		Hex Size AF		Minimum Internal Ø	
½"	13mm	½"	63mm	2 1/2"	24mm	1"	31mm	1 2/9"	25mm	1"	9mm	1/3"
¾"	19mm	¾"	63mm	2 1/2"	24mm	1"	31mm	1 2/9"	30mm	1 1/6"	13mm	1/2"
1"	25mm	1"	80mm	3 1/7"	30mm	1 1/6"	40mm	1 4/7"	35mm	1 3/8"	19mm	3/4"
1¼"	32mm	1¼"	80mm	3 1/7"	30mm	1 1/6"	40mm	1 4/7"	44mm	1 3/4"	24mm	1"
1½"	38mm	1½"	80mm	3 1/7"	30mm	1 1/6"	40mm	1 4/7"	50mm	2"	29mm	1 1/7"
2"	50mm	2"	93mm	3 2/3"	30mm	1 1/6"	50mm	2"	62mm	2 4/9"	40mm	1 4/7"
3"	75mm	3"	137mm	5 2/5"	42mm	1 2/3"	80mm	3 1/7"	89mm	3 1/2"	66mm	2 4/7"
½"	16mm	⅝"	62mm	2 4/9"	24mm	1"	30mm	1 1/6"	25mm	1"	11mm	3/7"
¾"	22mm	⅞"	63mm	2 1/2"	24mm	1"	31mm	1 2/9"	30mm	1 1/6"	15mm	3/5"
1"	28mm	1⅝"	80mm	3 1/7"	30mm	1 1/6"	40mm	1 4/7"	35mm	1 3/8"	20mm	4/5"
1¼"	38mm	1½"	80mm	3 1/7"	30mm	1 1/6"	50mm	2"	62mm	2 4/9"	29mm	1 1/7"
1½"	28mm	1⅝"	80mm	3 1/7"	30mm	1 1/6"	40mm	1 4/7"	50mm	2"	20mm	4/5"
1½"	32mm	1¼"	80mm	3 1/7"	30mm	1 1/6"	40mm	1 4/7"	50mm	2"	24mm	1"
2"	38mm	1½"	80mm	3 1/7"	30mm	1 1/6"	40mm	1 4/7"	50mm	2"	24mm	1"
3"	64mm	2½"	137mm	5 2/5"	42mm	1 2/3"	80mm	3 1/7"	90mm	3 1/2"	55mm	2 1/6"

The information contained in this information sheet is for general information purposes only. The information is provided by TruDesign™ and while we endeavour to keep the information up to date and correct, we make no representations or warranties of any kind, express or implied, about the completeness, accuracy, reliability, suitability, or availability. Any reliance you place on such information is therefore strictly at your own risk.



iq
parts
IQ-PARTS-SHOP.COM

info@iq-parts.nl
Harsweg 34A
2461 EZ Ter Aar
T +31 252 624 126
The Netherlands