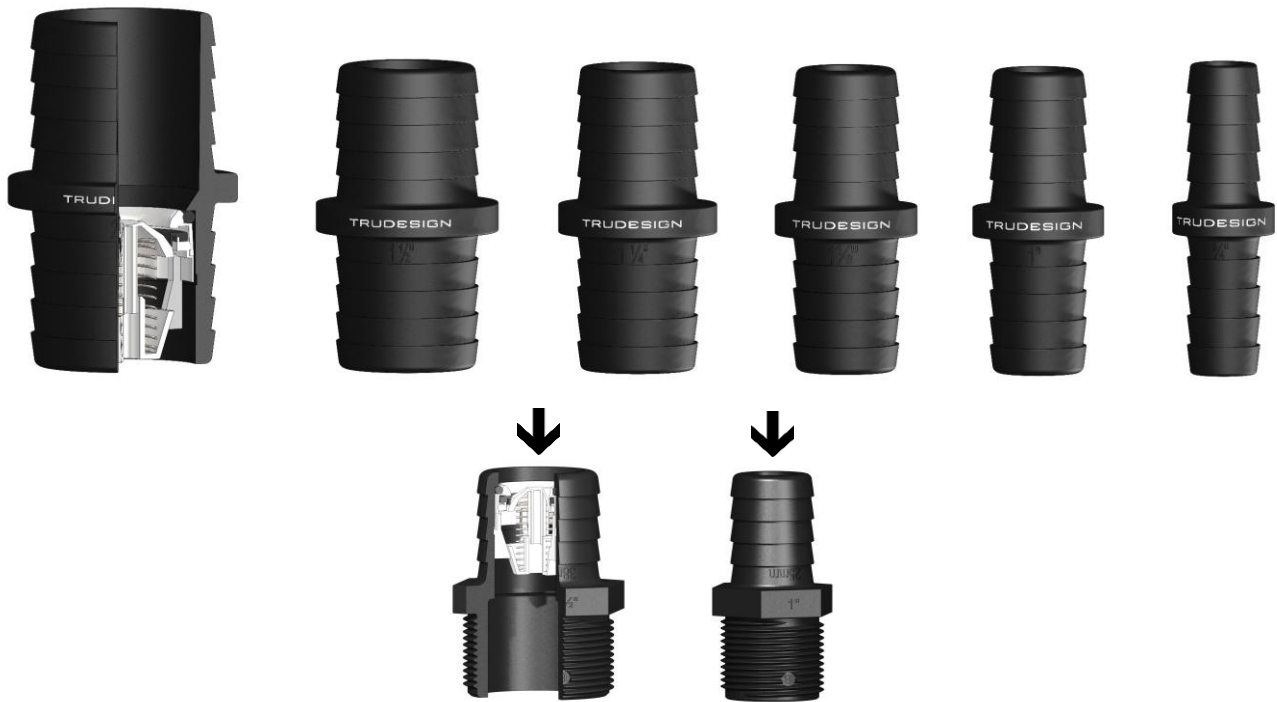


iQparts
IQ-PARTS-SHOP.COM



**SPECS &
INFORMATION**

Non-Return Valves (Check Valves)



TRUDESIGN Non-Return Valves (Check Valves) are used in-line to prevent water backflow or siphoning and are available in 6 sizes (in-line) and two sizes (threaded) in BSP or NPS.

Key Features:

- Manufactured from a glass reinforced nylon composite for high strength and light weight.
- “Water hammer safe” and insensitive to pressure shocks in the pipeline.
- UV resistant to prevent breaking down or discolouration from the sun.
- Stainless steel spring – No corrosion issues or risk of internal valve staying open.
- Minimal pressure required to open the valve with minimal restriction on flow rates.
- Inline fitting with minimal installation room needed and no other fittings required.
- White arrow printed (opposite logo side) for quick and easy identification of water flow direction.

Part Numbers (With Threaded Fitting):

Description	NON PKG	PKG
Non-Return Valve Tail 25mm 1" BSP	90990	91037
Non-Return Valve Tail 38mm 1 ½" BSP	90980	91039
Check Valve – 1" Barb, 1" NPS	91291	91292
Check Valve – 1 ½" Barb, 1 ½" NPS	91293	91294

Part Numbers (With Hose Fittings Only):

Description	NON PKG	PKG
Non-Return Valve ¾" (19mm)	90804	90845
Non-Return Valve 1" (25mm)	90805	90846
Non-Return Valve 1 ⅛" (28mm)	90950	90951
Non-Return Valve 1 ¼" (32mm)	90806	90847
Non-Return Valve 1 ½" (38mm)	90807	90848
Non-Return Valve 2" (50mm)	90812	90849

PKG product is supplied in branded bags

Specifications:

SIZE:	¾" (19mm)	1" (25mm)	1 ⅛" (28mm)	1 ¼" (28mm)	1 ½" (38mm)	2" (50mm)
Weight	21 g (0.7 oz)	34 g (1.2 oz)	46 g (1.6 oz)	50 g (1.8 oz)	67 g (2.4 oz)	119 g (4.2 oz)
Temp. Service	65°C	65°C	65°C	65°C	65°C	65°C
Temp. Max	93°C	93°C	93°C	93°C	93°C	93°C
Pressure Max	50 psi	50 psi	50 psi	50 psi	50 psi	50 psi
Cracking Pressure	~ 0.41 psi	~ 0.29 psi	~ 0.29 psi	~ 0.26 psi	~ 0.23 psi	~ 0.22 psi
Recommended for flow-rates between	15 – 42 Litre/min (4 – 11 gpm)	25 – 79 Litre/min (6.5 – 21 gpm)	25 – 79 Litre/min (6.5 – 21 gpm)	32 – 117 Litre/min (8.5 – 31 gpm)	61 – 193 Litre/min (16 – 51 gpm)	87 – 322 Litre/min (23 – 85 gpm)
Pressure loss at max flow-rate	3.8 psi (262 mbar)	3.8 psi (262 mbar)	3.8 psi (262 mbar)	2.8 psi (193 mbar)	2.3 psi (159 mbar)	2.9 psi (200 mbar)

Installation:

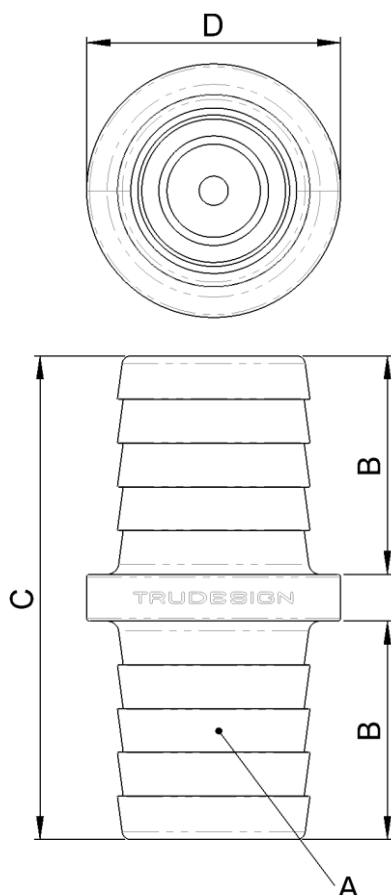
Ensure the Non-Return Valve (Check Valve) is installed with the water flowing in the same direction at the white arrow.

Use hose clamps on each end, ensuring not to over tighten.

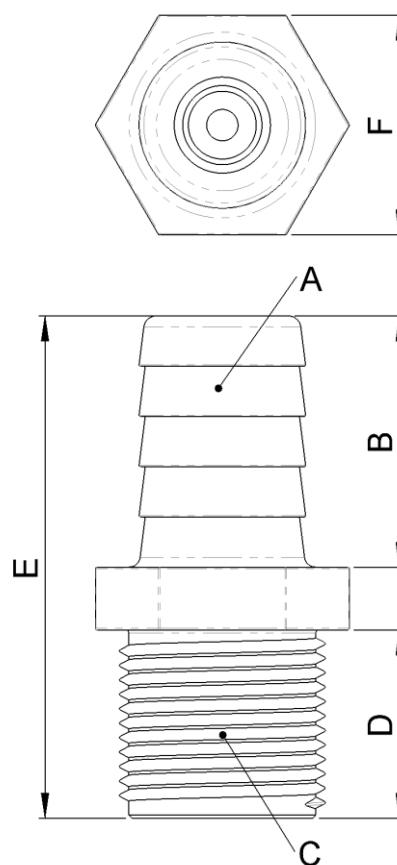
It is recommended for dirty water situations that the valve be cleaned once per annum to dislodge debris.

Dimensions:

Hose Fittings Only:



With Threaded Fitting:



Hose Fittings Only:

A	B		C		D	
Tail Size	Tail Length		Overall Length		Outside Diameter	
3/4"	39mm	1 1/2"	85mm	3 1/3"	28mm	1 1/9"
1"	38mm	1 1/2"	83mm	3 1/4"	36mm	1 3/7"
1 1/8"	38mm	1 1/2"	83mm	3 1/4"	20mm	3/4"
1 1/4"	38mm	1 1/2"	83mm	3 1/4"	44mm	1 5/7"
1 1/2"	38mm	1 1/2"	83mm	3 1/4"	50mm	2"
2"	40mm	1 4/7"	96mm	3 7/9"	64mm	2 1/2"

With Threaded Fitting:

A	B		C	D		E		F	
Tail Size	Tail Length		Thread Size	Thread Length		Overall Length		Hex Size AF	
1"	40mm	1 4/7"	1"	30mm	1 1/6"	80mm	3 1/7"	35mm	1 3/8"
1 1/2"	40mm	1 4/7"	1 1/2"	30mm	1 1/6"	80mm	3 1/7"	50mm	2"

The information contained in this information sheet is for general information purposes only. The information is provided by TruDesign™ and while we endeavour to keep the information up to date and correct, we make no representations or warranties of any kind, express or implied, about the completeness, accuracy, reliability, suitability, or availability. Any reliance you place on such information is therefore strictly at your own risk.



iq
parts
IQ-PARTS-SHOP.COM

info@iq-parts.nl
Harsweg 34A
2461 EZ Ter Aar
T +31 252 624 126
The Netherlands