

iQ parts
IQ-PARTS-SHOP.COM



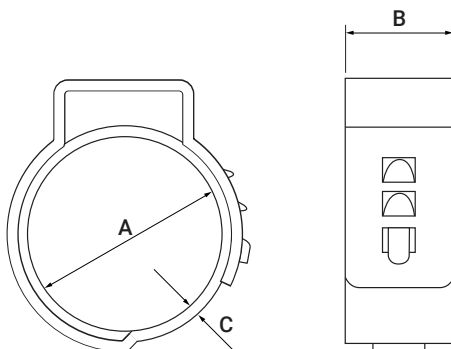
**SPECS &
INFORMATION**

HCL's Zero Leak Ear Clamp (O-Clip) is ideal for rubber and PVC hoses. The steel hose clamp forms a complete circle, removing the possibility of leakage.

It is quick and easy to assemble, It is tamper proof and has a low profile design and is manufactured from corrosion resistant Stainless Steel 304 or W4. The Zero leak metal hose clip is also known sometimes as a O clamp or pinch clamp.



Part Number HCL	Min Dia (A)		Max Dia (A)		Band Width (B)		Band Thickness (C)	
	mm	inch	mm	inch	mm	inch	mm	inch
ZLEC-7.0-W4	5.7	0.22	7.0	0.28	5.0	0.197	0.5	0.020
ZLEC-8.0-W4	6.8	0.27	8.0	0.32				
ZLEC-8.7-W4	7.0	0.28	8.7	0.34				
ZLEC-9.0-W4	7.3	0.29	9.0	0.35				
ZLEC-9.5-W4	7.8	0.31	9.5	0.37				
ZLEC-10.0-W4	8.3	0.33	10.0	0.39				
ZLEC-10.5-W4	8.8	0.35	10.5	0.41				
ZLEC-10.9-W4	9.2	0.36	10.9	0.43				
ZLEC-11.3-W4	9.6	0.38	11.3	0.45				
ZLEC-11.8-W4	10.1	0.40	11.8	0.47				
ZLEC-12.3-W4	9.8	0.39	12.3	0.48	7.0	0.276	0.6	0.024
ZLEC-12.8-W4	10.3	0.41	12.8	0.50				
ZLEC-13.3-W4	10.8	0.43	13.3	0.52				
ZLEC-13.8-W4	11.3	0.44	13.8	0.54				
ZLEC-14.0-W4	11.5	0.45	14.0	0.55				
ZLEC-14.2-W4	11.7	0.46	14.2	0.56				
ZLEC-14.5-W4	12.0	0.47	14.5	0.57				
ZLEC-14.8-W4	12.3	0.48	14.8	0.58				
ZLEC-15.3-W4	12.8	0.50	15.3	0.60				
ZLEC-15.7-W4	13.2	0.52	15.7	0.62				
ZLEC-16.0-W4	13.5	0.53	16.0	0.63				
ZLEC-16.8-W4	14.3	0.56	16.8	0.66				
ZLEC-17.0-W4	14.5	0.57	17.0	0.67				
ZLEC-17.5-W4	14.8	0.58	17.5	0.67				
ZLEC-18.0-W4	15.0	0.59	18.0	0.71				
ZLEC-18.5-W4	15.3	0.60	18.5	0.73				
ZLEC-19.2-W4	16.0	0.63	19.2	0.76				



PRODUCT INFORMATION

Made by:	Clamp Tiridon
RoHS Compliant:	Yes
Hazardous Goods:	No
HS Tariff Code:	7326 90 92

MATERIAL INFORMATION

	W4
Clamp:	304 Stainless Steel
Corrosion (ASTM B-117):	400 Hours



info@iq-parts.nl
Harsweg 34A
2461 EZ Ter Aar
T +31 252 624 126
The Netherlands