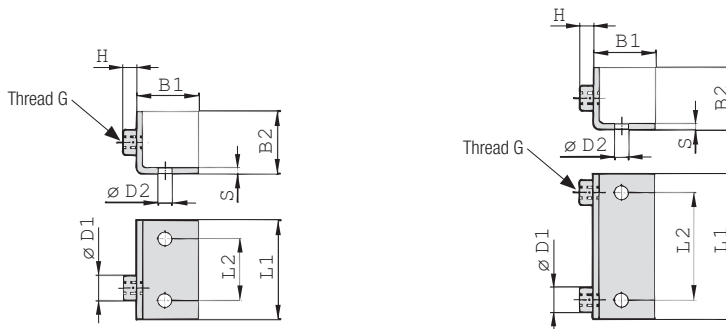


**iQ parts**  
IQ-PARTS-SHOP.COM



**SPECS &  
INFORMATION**

### Angled Weld Plate Type WSP



STAUFF Group 1

STAUFF Group 1A to 6

#### Ordering Codes

##### Weld Plate

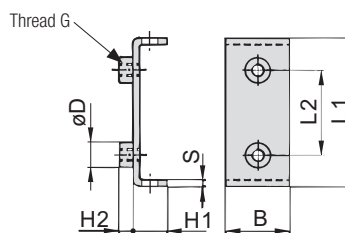
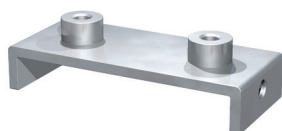
**\*WSP-\*1-\*M-\*W1**

- \* Angled Weld Plate **WSP**
- \* STAUFF Group **1**
- \* Thread code Metric ISO thread **M**  
Unified coarse (UNC) thread **U**
- \* Material code Carbon Steel, zinc/nickel-plated **W3**  
Stainless Steel V2A **W4**  
1.4301 / 1.4305 (AISI 304 / 303)  
Stainless Steel V4A **W5**  
1.4401 / 1.4571 (AISI 316 / 316 Ti)

Group STAUFF	DIN	Dimensions (mm/in)								Ordering Codes (Standard Options)		
		Thread G	L1	L2	B1	B2	S	H	ØD1	ØD2		
1	0	M6	30	14	30	30	3	6,5	12	6,5	<b>WSP-1-M-W1</b>	<b>WSP-1-U-W1</b>
		1/4-20 UNC	1.18	.55	1.18	1.18	.12	.26	.47	.26		
1A	1	M6	36	20	30	30	3	6,5	12	6,5	<b>WSP-1A-M-W1</b>	<b>WSP-1A-U-W1</b>
		1/4-20 UNC	1.26	.79	1.18	1.18	.12	.26	.47	.26		
2	2	M6	42	26	30	30	3	6,5	12	6,5	<b>WSP-2-M-W1</b>	<b>WSP-2-U-W1</b>
		1/4-20 UNC	1.65	1.02	1.18	1.18	.12	.26	.47	.26		
3	3	M6	50	33	30	30	3	6,5	12	6,5	<b>WSP-3-M-W1</b>	<b>WSP-3-U-W1</b>
		1/4-20 UNC	1.97	1.30	1.18	1.18	.12	.26	.47	.26		
4	4	M6	60	40	30	30	3	6,5	12	6,5	<b>WSP-4-M-W1</b>	<b>WSP-4-U-W1</b>
		1/4-20 UNC	2.36	1.57	1.18	1.18	.12	.26	.47	.26		
5	5	M6	70	52	30	30	3	6,5	12	6,5	<b>WSP-5-M-W1</b>	<b>WSP-5-U-W1</b>
		1/4-20 UNC	2.76	2.05	1.18	1.18	.12	.26	.47	.26		
6	6	M6	88	66	30	30	3	6,5	12	6,5	<b>WSP-6-M-W1</b>	<b>WSP-6-U-W1</b>
		1/4-20 UNC	3.46	2.60	1.18	1.18	.12	.26	.47	.26		

All threaded parts are available with Metric ISO thread or unified coarse (UNC) thread according to dimension table. Alternative materials and surface finishings are available upon request. Contact STAUFF for further information.

### Bridge Weld Plate Type BSP



#### Ordering Codes

##### Weld Plate

**\*BSP-\*1A-\*M-\*W1**

- \* Bridge Weld Plate **BSP**
- \* STAUFF Group **1A**
- \* Thread code Metric ISO thread **M**  
Unified coarse (UNC) thread **U**
- \* Material code Carbon Steel, phosphated **W2**  
Carbon Steel, zinc/nickel-plated **W3**  
Stainless Steel V2A **W4**  
1.4301 / 1.4305 (AISI 304 / 303)  
Stainless Steel V4A **W5**  
1.4401 / 1.4571 (AISI 316 / 316 Ti)

Group STAUFF	DIN	Dimensions (mm/in)								Ordering Codes (Standard Options)		
		Thread G	L1	L2	B	S	H1	H2	ØD			
1A	1	M6	48	20	30	3	13	6,5	12	6,5	<b>BSP-1A-M-W1</b>	<b>BSP-1A-U-W1</b>
		1/4-20 UNC	1.89	.79	1.18	.12	.52	.26	.47	.26		
2	2	M6	54	26	30	3	13	6,5	12	6,5	<b>BSP-2-M-W1</b>	<b>BSP-2-U-W1</b>
		1/4-20 UNC	2.13	1.02	1.18	.12	.52	.26	.47	.26		
3	3	M6	62	33	30	3	13	6,5	12	6,5	<b>BSP-3-M-W1</b>	<b>BSP-3-U-W1</b>
		1/4-20 UNC	2.44	1.30	1.18	.12	.52	.26	.47	.26		
4	4	M6	71	40	30	3	13	6,5	12	6,5	<b>BSP-4-M-W1</b>	<b>BSP-4-U-W1</b>
		1/4-20 UNC	2.80	1.57	1.18	.12	.52	.26	.47	.26		
5	5	M6	85	52	30	3	13	6,5	12	6,5	<b>BSP-5-M-W1</b>	<b>BSP-5-U-W1</b>
		1/4-20 UNC	3.35	2.05	1.18	.12	.52	.26	.47	.26		
6	6	M6	98	66	30	3	13	6,5	12	6,5	<b>BSP-6-M-W1</b>	<b>BSP-6-U-W1</b>
		1/4-20 UNC	3.86	2.60	1.18	.12	.52	.26	.47	.26		

All threaded parts are available with Metric ISO thread or unified coarse (UNC) thread according to dimension table. Alternative materials and surface finishings are available upon request. Contact STAUFF for further information.





info@iq-parts.nl  
Harsweg 34A  
2461 EZ Ter Aar  
T +31 252 624 126  
The Netherlands