

iQ parts
IQ-PARTS-SHOP.COM



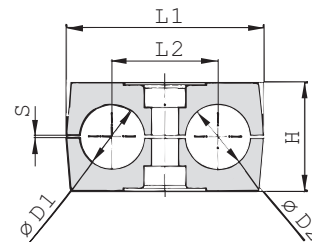
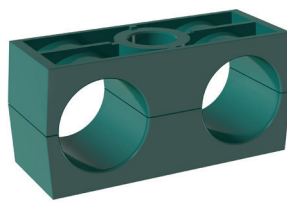
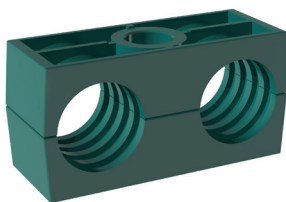
**SPECS &
INFORMATION**

Clamp Body - Profiled Design

Profiled Inside Surface with Tension Clearance

Clamp Body - Type H

Smooth Inside Surface w/o Tension Clearance



C

Ordering Codes

Clamp Body

***1*06/06*-PP**

One clamp body is consisting of two clamp halves.

- * 1st Part of STAUFF Group **1**
- * Exact outside diameters Ø D1 / Ø D2 (mm) **06/06**
- * Material code (see below) **PP**

Designs & Standard Materials



Polypropylene - Profiled Design

Profiled inside surface with tension clearance

Colour: Green

Material code: **PP**



Polypropylene - Profiled Design

Profiled inside surface with tension clearance

Colour: Black

Material code: **PP-BK**



Polypropylene - Type H

Smooth inside surface without tension clearance

Colour: Green

Material code: **PP-H**



Polypropylene - Type H

Smooth inside surface without tension clearance

Colour: Black

Material code: **PP-H-BK**



Polyamide - Profiled Design

Profiled inside surface with tension clearance

Colour: Black

Material code: **PA**



Polyamide - Type H

Smooth inside surface without tension clearance

Colour: Black

Material code: **PA-H**

See pages 154 / 155 for properties and technical information.

Special Materials

Please contact STAUFF for further details on fire-proof clamp body materials, tested and approved according to several international fire-protection standards (such as BS 6853, EN 45545-2, UL 94 and many more).

See pages 156 / 157 for material properties and technical information.

Product Features

- Proven, tested and trusted product in various markets
- Profiled design recommended for the safe installation of rigid pipes and tubes; type H recommended for the safe installation of hoses and cables
- Available for all commonly used pipe and tube outside diameters
- Environmental protection due to vibration/noise reducing design
- Excellent weathering resistance, even under extreme conditions

Group	STAUFF	DIN	Outside Diameter		Nominal Bore	Copper Tube	Ordering Codes	Dimensions (mm/in)										
			Pipe / Tube / Hose	Pipe				Ø D1 / Ø D2 (mm)	(in)	Pipe (in)	ASTM B88 (in)	(**-* = Material)	L1	L2	H	S min.	TypeH	Width
1D	1	6					106/06-**-*											
		6,4	1/4				106.4/06.4-**-*											
		8	5/16					108/08-**-*	36	20	27	0,6	26,5	30				
		9,5	3/8		1/4			109.5/09.5-**-*	1.42	.79	1.06	.02	1.04	1.18				
		10			1/8			110/10-**-*										
		12						112/12-**-*										
2D	2	12,7	1/2		3/8		212.7/12.7-**-*											
		13,5			1/4			213.5/13.5-**-*										
		14						214/14-**-*										
		15						215/15-**-*	53	29	27	0,7	26	30				
		16	5/8		1/2			216/16-**-*	2.09	1.14	1.06	.03	1.02	1.18				
		17,2			3/8			217.2/17.2-**-*										
3D	3	18					218/18-**-*											
		19	3/4				319/19-**-*											
		20						320/20-**-*										
		21,3			1/2			321.3/21.3-**-*	67	36	37	0,7	36,5	30				
		22	7/8		3/4			322/22-**-*	2.64	1.42	1.46	.03	1.44	1.18				
		25						325/25-**-*										
4D	4	25,4	1				325.4/25.4-**-*											
		26,9			3/4			426.9/26.9-**-*										
		28						428/28-**-*	80	45	40	0,7	38	30				
5D	5	30					430/30-**-*	3.15	1.77	1.57	.03	1.46	1.18					
		32	1-1/4				532/32-**-*											
		33,7			1			533.7/33.7-**-*										
		35			1-1/4			535/35-**-*	106	56	53	0,7	52	30				
		38	1-1/2					538/38-**-*	4.17	2.20	2.09	.03	2.04	1.18				
		40						540/40-**-*										
			1-1/4				542/42-**-*											

Additional outside diameters and combinations of different outside diameters are available upon request. Please contact STAUFF for further information.





info@iq-parts.nl
Harsweg 34A
2461 EZ Ter Aar
T +31 252 624 126
The Netherlands