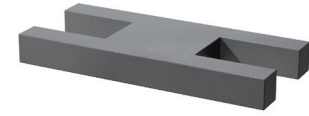
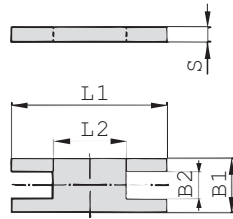


**iQ parts**  
IQ-PARTS-SHOP.COM



**SPECS &  
INFORMATION**

### Safety Locking Plate (for Use with Stacking Bolt AF) Type SIP


**B**

| Group<br>STAUFF | DIN | Dimensions (mm/in) |      |      |      |     | Ordering Codes<br>(Standard Options) |
|-----------------|-----|--------------------|------|------|------|-----|--------------------------------------|
|                 |     | L1                 | L2   | B1   | B2   | S   |                                      |
| 3S              | 1   | 57                 | 13   | 30   | 15,2 | 8   | SIP-3S-W2                            |
|                 |     | 2.24               | .51  | 1.18 | .60  | .31 |                                      |
| 4S              | 2   | 70                 | 26   | 30   | 15,2 | 8   | SIP-4S-W2                            |
|                 |     | 2.76               | 1.02 | 1.18 | .60  | .31 |                                      |
| 5S              | 3   | 85                 | 40   | 30   | 15,2 | 8   | SIP-5S-W2                            |
|                 |     | 3.35               | 1.57 | 1.18 | .60  | .31 |                                      |
| 6S              | 4   | 116                | 68   | 45   | 17,2 | 10  | SIP-6S-W2                            |
|                 |     | 4.57               | 2.68 | 1.77 | .68  | .39 |                                      |
| 7S              | 5   | 153                | 96   | 60   | 22   | 10  | SIP-7S-W2                            |
|                 |     | 6.02               | 3.78 | 2.36 | .87  | .39 |                                      |
| 8S              | 6   | 206                | 130  | 80   | 28   | 15  | SIP-8S-W1                            |
|                 |     | 8.11               | 5.12 | 3.15 | 1.10 | .59 |                                      |
| 9S              | 7   | 251                | 166  | 90   | 31   | 15  | SIP-9S-W1                            |
|                 |     | 9.88               | 6.54 | 3.54 | 1.22 | .59 |                                      |
| 10S             | 8   | 317                | 205  | 120  | 49   | 25  | SIP-10-S-W1                          |
|                 |     | 12.48              | 8.07 | 4.72 | 1.93 | .98 |                                      |

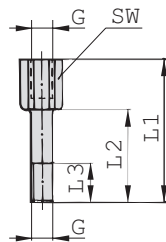
#### Ordering Codes

#### Safety Locking Plate \*SIP-\*3S-\*W2

|                        |                                     |     |
|------------------------|-------------------------------------|-----|
| * Safety Locking Plate |                                     | SIP |
| * STAUFF Group         |                                     | 3S  |
| * Material code        | Carbon Steel, uncoated              | W1  |
|                        | Carbon Steel, phosphated            | W2  |
|                        | Carbon Steel, zinc/nickel-plated    | W3  |
|                        | Stainless Steel V2A                 | W4  |
|                        | 1.4301 / 1.4305 (AISI 304 / 303)    | W4  |
|                        | Stainless Steel V4A                 | W5  |
|                        | 1.4401 / 1.4571 (AISI 316 / 316 Ti) | W5  |

Alternative materials and surface finishings are available upon request. Contact STAUFF for further information.

### Stacking Bolt (for Use with Safety Locking Plate SIP) Type AF



| Group<br>STAUFF | DIN | Dimensions (mm/in) |       |         |      |             | Ordering Codes<br>(Standard Options) |
|-----------------|-----|--------------------|-------|---------|------|-------------|--------------------------------------|
|                 |     | L1                 | L2    | L3 min. | Hex  | Thread G    |                                      |
| 3S              | 1   | 49                 | 25    | 15      | 15   | M10         | AF-3S-M-W2                           |
|                 |     | 1.93               | .98   | .59     | .59  | 3/8-16 UNC  | AF-3S-U-W3*                          |
| 4S              | 2   | 65                 | 40    | 15      | 15   | M10         | AF-4S-M-W2                           |
|                 |     | 2.56               | 1.57  | .59     | .59  | 3/8-16 UNC  | AF-4S-U-W3*                          |
| 5S              | 3   | 77                 | 51    | 15      | 15   | M10         | AF-5S-M-W2                           |
|                 |     | 3.03               | 2.01  | .59     | .59  | 3/8-16 UNC  | AF-5S-U-W3*                          |
| 6S              | 4   | 110                | 82    | 18      | 17   | M12         | AF-6S-M-W2                           |
|                 |     | 4.33               | 3.23  | .71     | .67  | 7/16-14 UNC | AF-6S-U-W3*                          |
| 7S              | 5   | 144                | 110   | 24      | 22   | M16         | AF-7S-M-W2                           |
|                 |     | 5.67               | 4.33  | .94     | .87  | 5/8-11 UNC  | AF-7S-U-W3*                          |
| 8S              | 6   | 200                | 150   | 30      | 27   | M20         | AF-8S-M-W2                           |
|                 |     | 7.87               | 5.91  | 1.18    | 1.06 | 3/4-10 UNC  | AF-8S-U-W1*                          |
| 9S              | 7   | 240                | 180   | 50      | 30   | M24         | AF-9S-M-W2                           |
|                 |     | 9.45               | 7.09  | 1.97    | 1.18 | 7/8-9 UNC   | AF-9S-U-W1*                          |
| 10S             | 8   | 331                | 256   | 62      | 46   | M30         | AF-10S-M-W2                          |
|                 |     | 13.03              | 10.08 | 2.44    | 1.81 | 1-1/8-7 UNC | AF-10S-U-W1*                         |

#### Ordering Codes

#### Stacking Bolt \*AF-\*3S-\*M-\*W2

|                 |                                     |    |
|-----------------|-------------------------------------|----|
| * Stacking Bolt |                                     | AF |
| * STAUFF Group  |                                     | 3S |
| * Thread code   | Metric ISO thread                   | M  |
|                 | Unified coarse (UNC) thread         | U  |
| * Material code | Carbon Steel, uncoated              | W1 |
|                 | Carbon Steel, phosphated            | W2 |
|                 | Carbon Steel, zinc/nickel-plated    | W3 |
|                 | Stainless Steel V2A                 | W4 |
|                 | 1.4301 / 1.4305 (AISI 304 / 303)    | W4 |
|                 | Stainless Steel V4A                 | W5 |
|                 | 1.4401 / 1.4571 (AISI 316 / 316 Ti) | W5 |

All threaded parts are available with Metric ISO thread or unified coarse (UNC) thread according to dimension table. Alternative materials and surface finishings are available upon request. Contact STAUFF for further information.

\* Standard finishing option for Heavy Series group sizes 3S to 7S in North America is W3 (Carbon Steel, zinc/nickel-plated). Standard finishing option for Heavy Series group sizes 8S to 10S in North America is W1 (Carbon Steel, uncoated).







info@iq-parts.nl  
Harsweg 34A  
2461 EZ Ter Aar  
T +31 252 624 126  
The Netherlands