

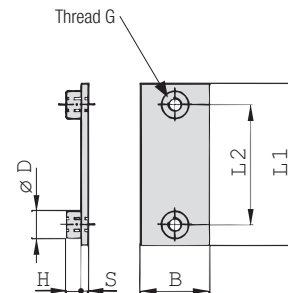
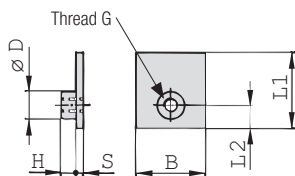
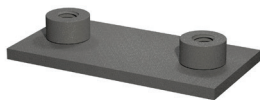
iQ parts
IQ-PARTS-SHOP.COM



**SPECS &
INFORMATION**

Single Weld Plate Type SP

A



STAUFF Group 1

STAUFF Group 1A to 8

Ordering Codes

Weld Plate

***SP-*1-*M-*W2**

- * Single Weld Plate **SP**
- * STAUFF Group **1**
- * Thread code Metric ISO thread **M**
 Unified coarse (UNC) thread **U**
- * Material code Carbon Steel, phosphated **W2**
 Carbon Steel, zinc/nickel-plated **W3**

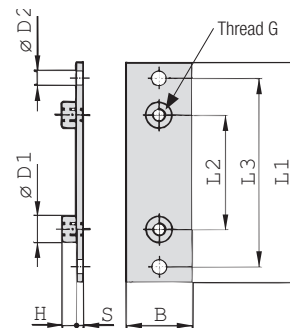
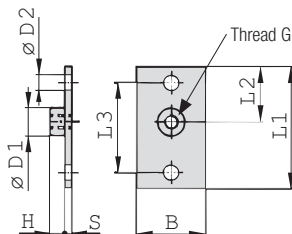
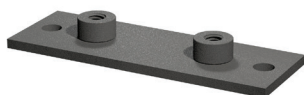
 Stainless Steel V2A **W4**
 1.4301 / 1.4305 (AISI 304 / 303)
 Stainless Steel V4A **W5**
 1.4401 / 1.4571 (AISI 316 / 316 Ti)

 Aluminium EN AW-6060 **W85**
 (Dimension S: 5 mm / .20 in)

Group	DIN	Dimensions (mm/m)	Thread G	L1	L2	B	S	H	ØD	Ordering Codes (Standard Options)
1	0	M6	31,5	10	30	3	6,5	12		SP-1-M-W2
		1/4-20 UNC	1.24	0.39	1.18	.12	.26	.47		SP-1-U-W2
1A	1	M6	36	20	30	3	6,5	12		SP-1A-M-W2
		1/4-20 UNC	1.42	0.79	1.18	.12	.26	.47		SP-1A-U-W2
2	2	M6	42	26	30	3	6,5	12		SP-2-M-W2
		1/4-20 UNC	1.65	1.02	1.18	.12	.26	.47		SP-2-U-W2
3	3	M6	50	33	30	3	6,5	12		SP-3-M-W2
		1/4-20 UNC	1.97	1.30	1.18	.12	.26	.47		SP-3-U-W2
4	4	M6	60	40	30	3	6,5	12		SP-4-M-W2
		1/4-20 UNC	2.36	1.57	1.18	.12	.26	.47		SP-4-U-W2
5	5	M6	71	52	30	3	6,5	12		SP-5-M-W2
		1/4-20 UNC	2.80	2.05	1.18	.12	.26	.47		SP-5-U-W2
6	6	M6	88	66	30	3	6,5	12		SP-6-M-W2
		1/4-20 UNC	3.46	2.60	1.18	.12	.26	.47		SP-6-U-W2
7	7	M6	122	94	30	5	6,5	12		SP-7-M-W2
		1/4-20 UNC	4.80	3.70	1.18	.20	.26	.47		SP-7-U-W2
8	8	M6	148	120	30	5	6,5	12		SP-8-M-W2
		1/4-20 UNC	5.83	4.72	1.18	.20	.26	.47		SP-8-U-W2

All threaded parts are available with Metric ISO thread or unified coarse (UNC) thread according to dimension table. Alternative materials and surface finishings are available upon request. Contact STAUFF for further information.

Elongated Weld Plate Type SPV



STAUFF Group 1

STAUFF Group 1A to 8

Ordering Codes

Weld Plate

***SPV-*1-*M-*W2**

- * Elongated Weld Plate **SPV**
- * STAUFF Group **1**
- * Thread code Metric ISO thread **M**
 Unified coarse (UNC) thread **U**
- * Material code Carbon Steel, phosphated **W2**
 Carbon Steel, zinc/nickel-plated **W3**

 Stainless Steel V2A **W4**
 1.4301 / 1.4305 (AISI 304 / 303)
 Stainless Steel V4A **W5**
 1.4401 / 1.4571 (AISI 316 / 316 Ti)

Group	DIN	Dimensions (mm/m)	Thread G	L1	L2	L3	B	S	H	ØD1	ØD2	Ordering Codes (Standard Options)
1	0	M6	58	24,5	44	30	3	6,5	12	6,5		SPV-1-M-W2
		1/4-20 UNC	2.28	.96	1.73	1.18	.12	.26	.47	.26		SPV-1-U-W2
1A	1	M6	64	20	50	30	3	6,5	12	6,5		SPV-1A-M-W2
		1/4-20 UNC	2.52	.79	1.97	1.18	.12	.26	.47	.26		SPV-1A-U-W2
2	2	M6	70	26	56	30	3	6,5	12	6,5		SPV-2-M-W2
		1/4-20 UNC	2.76	1.02	2.20	1.18	.12	.26	.47	.26		SPV-2-U-W2
3	3	M6	78	33	64	30	3	6,5	12	6,5		SPV-3-M-W2
		1/4-20 UNC	3.07	1.30	2.52	1.18	.12	.26	.47	.26		SPV-3-U-W2
4	4	M6	87	40	73	30	3	6,5	12	6,5		SPV-4-M-W2
		1/4-20 UNC	3.43	1.57	2.87	1.18	.12	.26	.47	.26		SPV-4-U-W2
5	5	M6	100	52	86	30	3	6,5	12	6,5		SPV-5-M-W2
		1/4-20 UNC	3.94	2.05	3.39	1.18	.12	.26	.47	.26		SPV-5-U-W2
6	6	M6	115	66	100	30	3	6,5	12	6,5		SPV-6-M-W2
		1/4-20 UNC	4.53	2.60	3.94	1.18	.12	.26	.47	.26		SPV-6-U-W2
7	7	M6	150	94	136	30	5	6,5	12	6,5		SPV-7-M-W2
		1/4-20 UNC	5.91	3.70	5.35	1.18	.20	.26	.47	.26		SPV-7-U-W2
8	8	M6	178	120	162	30	5	6,5	12	6,5		SPV-8-M-W2
		1/4-20 UNC	7.01	4.72	6.38	1.18	.20	.26	.47	.26		SPV-8-U-W2

All threaded parts are available with Metric ISO thread or unified coarse (UNC) thread according to dimension table. Alternative materials and surface finishings are available upon request. Contact STAUFF for further information.





info@iq-parts.nl
Harsweg 34A
2461 EZ Ter Aar
T +31 252 624 126
The Netherlands