

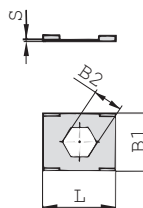
**iQ parts**  
IQ-PARTS-SHOP.COM



**SPECS &  
INFORMATION**

### Safety Locking Plate

#### Type SI (for Use with Stacking Bolt AF)



**Safety Locking Plate SI**  
(Prevents Stacking Bolt from Loosening)

#### Ordering Codes

#### Safety Locking Plate **\*SI-\*1D-\*W3**

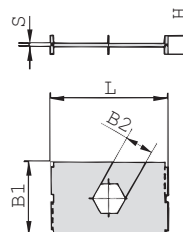
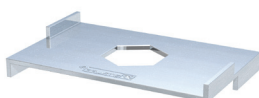
- \* Safety Locking Plate **SI**
- \* STAUFF Group 1D (DIN Group 1) **1D**  
2D to 5D (DIN Group 2 to 5) **2-5D**
- \* Material code Carbon Steel, zinc/nickel-plated **W3**  
Stainless Steel V2A **W4**  
1.4301 / 1.4305 (AISI 304 / 303)  
Stainless Steel V4A **W5**  
1.4401 / 1.4571 (AISI 316 / 316 Ti)

Group STAUFF	DIN	Dimensions (mm/in)				Ordering Codes (Standard Options)
		L	B1	B2	S	
1D	1	27	22	11,2	0,5	SI-1D-W3
		1.06	.86	.44	.02	
2D	2	27	22	12,2	0,5	SI-2-5D-W3
3D	3					
4D	4					
5D	5	1.06	.86	.48	.02	

Alternative materials and surface finishings are available upon request. Contact STAUFF for further information.

### Safety Locking Plate

#### Type SIV (for Use with Stacking Bolt AF)



**Safety Locking Plate SIV**  
(Prevents Stacking Bolt from Loosening and Upper Clamp from Turning)

#### Ordering Codes

#### Safety Locking Plate **\*SIV-\*1D-\*W3**

- \* Safety Locking Plate **SIV**
- \* STAUFF Group 1D (DIN Group 1) **1D**  
2D to 3D (DIN Group 2 to 3) **2-3D**
- \* Material code Carbon Steel, zinc/nickel-plated **W3**  
Stainless Steel V4A **W5**  
1.4401 / 1.4571 (AISI 316 / 316 Ti)

Group STAUFF	DIN	Dimensions (mm/in)					Ordering Codes (Standard Options)
		L	B1	B2	S	H	
1D	1	27	28	11,1	1	7	SIV-1D-W3
		1.06	1.10	.44	.04	.27	
2D	2	45	28	12,1	1	7	SIV-2-3D-W3
3D	3						
		1.77	1.10	.48	.04	.27	

Alternative materials and surface finishings are available upon request. Contact STAUFF for further information.





info@iq-parts.nl  
Harsweg 34A  
2461 EZ Ter Aar  
T +31 252 624 126  
The Netherlands