

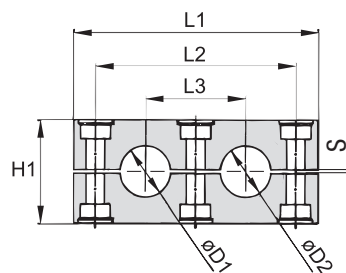
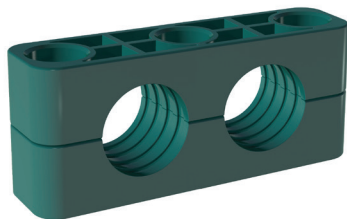
**iQ parts**  
IQ-PARTS-SHOP.COM



**SPECS &  
INFORMATION**

### Clamp Body - Profiled Design

Profiled Inside Surface with Tension Clearance



D

#### Ordering Codes

**Clamp Body** \*4\*012.7/12.7-\*PP

One clamp body is consisting of two clamp halves.

- \* 1<sup>st</sup> part of STAUFF Group **4**
- \* Exact outside diameters Ø D1 / Ø D2 (mm) **012.7/12.7**
- \* Material code (see below) **PP**

#### Standard Materials



**Polypropylene**  
Colour: Green  
Material code: **PP**



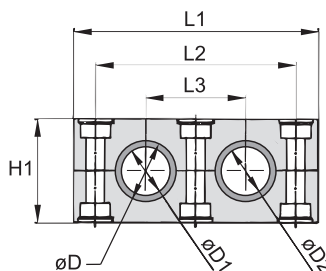
**Polyamide**  
Colour: Black  
Material code: **PA**

See pages 154 / 155 for material properties and technical information.

Group	Outside Diameter Pipe / Tube Ø D1 / Ø D2		Nominal Bore Pipe (in)	Copper Tube ASTM B88 (in)	Ordering Codes (2 Clamp Halves) (** = Material)	Dimensions (mm/in)					
	(mm)	(in)				L1	L2	L3	H1	S	Width
4S-D	12,7	1/2		3/8	4012.7/12.7-**-*	115 4.53	90 3.54	45 1.77	48 1.89	1,2 .05	30 1.18
	19	3/4			4019/19-**-*						
	20				4020/20-**-*						
	21,3		1/2		4021.3/21.3-**-*						
	22			3/4	4022/22-**-*						
	25,4	1			4025.4/25.4-**-*						
5S-D	26,9		3/4		4026.9/26.9-**-*	145 5.71	120 4.72	60 2.36	60 2.36	2,0 .08	30 1.18
	32	1-1/4			5032/32-**-*						
	33,7		1		5033.7/33.7-**-*						
	38	1-1/2			5038/38-**-*						
	42		1-1/4		5042/42-**-*						

Additional outside diameters and Clamp Bodies, type H (smooth inside surface without tension clearance) are available upon request. Please contact STAUFF for further information.

### Clamp Body with Elastomer Inserts Type RI



For use with Elastomer Inserts of the Heavy Series, STAUFF Group 4S and 5S (see page 39 for details)

#### Ordering Codes

**Clamp Assembly** \*4\*006/06-\*PP-R

One assembly is consisting of one clamp body and two inserts.

- \* 1<sup>st</sup> part of STAUFF Group **4**
- \* Exact outside diameters Ø D1 / Ø D2 (mm) **006/06**
- \* Material code (see below) **PP-R**

#### Standard Materials



**Polypropylene**  
Colour: Black  
Material code: **PP-R**



**Polyamide**  
Colour: Black  
Material code: **PA-R**



**Elastomer Inserts**  
**Thermoplastic Elastomer (73 Shore-A)**  
Colour: Black

Group	Outside Diameter Pipe / Tube / Hose Ø D1 / Ø D2		Ordering Codes (Clamp Assembly) (**R = Material)	Dimensions (mm/in)					
	(mm)	(in)		Ø D	L1	L2	L3	H1	Width
4S-D	6		4006/06-**-R	25 .98	115 4.53	90 3.54	45 1.77	48 1.89	30 1.18
	8	5/16	4008/08-**-R						
	10		4010/10-**-R						
	12		4012/12-**-R						
	12,7	1/2	4012.7/12.7-**-R						
	14		4014/14-**-R						
	15		4015/15-**-R						
	16	5/8	4016/16-**-R						
	17,2		4017.2/17.2-**-R						
	18		4018/18-**-R						
	19	3/4	4019/19-**-R						
5S-D	20		5020/20-**-R	38 1.50	145 5.71	120 4.72	60 2.36	60 2.36	30 1.18
	21,3		5021.3/21.3-**-R						
	22	7/8	5022/22-**-R						
	25		5025/25-**-R						
	26,9		5026.9/26.9-**-R						
	28		5028/28-**-R						
	30		5030/30-**-R						
	32	1-1/4	5032/32-**-R						

See pages 154 / 155 for properties and technical information.

Additional outside diameters are available upon request. Please contact STAUFF for further information.







info@iq-parts.nl  
Harsweg 34A  
2461 EZ Ter Aar  
T +31 252 624 126  
The Netherlands