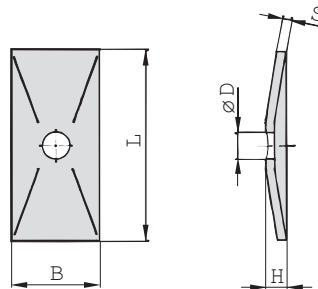
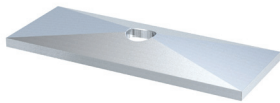


iQ parts
IQ-PARTS-SHOP.COM



**SPECS &
INFORMATION**

Cover Plate Type GD



Ordering Codes

Cover Plate

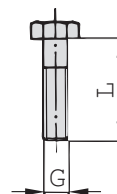
***GD-*1D-*W3**

| | | |
|-----------------|-------------------------------------|-----------|
| * Cover Plate | | GD |
| * STAUFF Group | | 1D |
| * Material code | Carbon Steel, zinc/nickel-plated | W3 |
| | Stainless Steel V2A | W4 |
| | 1.4301 / 1.4305 (AISI 304 / 303) | W4 |
| | Stainless Steel V4A | W5 |
| | 1.4401 / 1.4571 (AISI 316 / 316 Ti) | W5 |

| Group STAUFF | DIN | Dimensions (mm/in) | | | | | Ordering Codes (Standard Options) |
|-----------------|-----|--------------------|------|-----|-----|-----|--------------------------------------|
| | | L | B | H | S | ØD | |
| 1D | 1 | 34 | 30 | 7 | 3 | 7 | GD-1D-W3 |
| | | 1.34 | 1.18 | .28 | .12 | .28 | |
| 2D | 2 | 52 | 30 | 7 | 3 | 9 | GD-2D-W3 |
| | | 2.05 | 1.18 | .28 | .12 | .35 | |
| 3D | 3 | 65 | 30 | 7 | 3 | 9 | GD-3D-W3 |
| | | 2.56 | 1.18 | .28 | .12 | .35 | |
| 4D | 4 | 79 | 30 | 7 | 3 | 9 | GD-4D-W3 |
| | | 3.11 | 1.18 | .28 | .12 | .35 | |
| 5D | 5 | 102 | 30 | 7 | 3 | 9 | GD-5D-W3 |
| | | 4.02 | 1.18 | .28 | .12 | .35 | |

Alternative materials and surface finishings are available upon request. Contact STAUFF for further information.

Hexagon Head Bolt Type AS



Hexagon Head Bolt AS

(according to DIN 931 / 933 or ANSI / ASME B18.2.1.)

Dimensions applicable only when used with Cover Plate GD

Ordering Codes

Hexagon Head Bolt *AS-*M8x35-*W3

| | | |
|--|--|-----------|
| * Type of bolt | Hexagon Head Bolt (according to DIN 931 / 933 or ANSI / ASME B18.2.1.) | AS |
| * Thread type and size acc. to dimension table | M8x35 | |
| * Material code | Carbon Steel, zinc/nickel-plated | W3 |
| | Stainless Steel V2A | W4 |
| | 1.4301 / 1.4305 (AISI 304 / 303) | W4 |
| | Stainless Steel V4A | W5 |
| | 1.4401 / 1.4571 (AISI 316 / 316 Ti) | W5 |

| Group STAUFF | DIN | Dimensions (mm/in) | | Ordering Codes (Standard Options) |
|-----------------|-----|---------------------|--|--------------------------------------|
| | | Thread G x L | | |
| 1D | 1 | M6 x 35 | | AS-M6x35-W3 |
| | | 1/4-20 UNC x 1-3/8 | | AS-1/4-20UNCx1-3/8-W3 |
| 2D | 2 | M8 x 35 | | AS-M8x35-W3 |
| | | 5/16-18 UNC x 1-3/8 | | AS-5/16-18UNCx1-3/8-W3 |
| 3D | 3 | M8 x 45 | | AS-M8x45-W3 |
| | | 5/16-18 UNC x 1-3/4 | | AS-5/16-18UNCx1-3/4-W3 |
| 4D | 4 | M8 x 50 | | AS-M8x50-W3 |
| | | 5/16-18 UNC x 2 | | AS-5/16-18UNCx2-W3 |
| 5D | 5 | M8 x 60 | | AS-M8x60-W3 |
| | | 5/16-18 UNC x 2-1/2 | | AS-5/16-18UNCx2-1/2-W3 |

All threaded parts are available with Metric ISO thread or unified coarse (UNC) thread according to dimension table. Alternative materials and surface finishings are available upon request. Contact STAUFF for further information.





info@iq-parts.nl
Harsweg 34A
2461 EZ Ter Aar
T +31 252 624 126
The Netherlands