

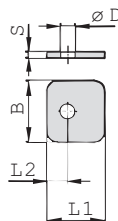
iQ parts
IQ-PARTS-SHOP.COM



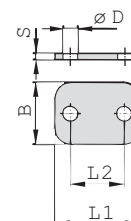
**SPECS &
INFORMATION**

Cover Plate
Type DP

A



STAUFF Group 1



STAUFF Group 1A to 8

Ordering Codes

Cover Plate

***DP-*1-*W3**

- * Cover Plate **DP**
- * STAUFF Group **1**
- * Material code **W3** Carbon Steel, zinc/nickel-plated
- W4** Stainless Steel V2A
1.4301 / 1.4305 (AISI 304 / 303)
- W5** Stainless Steel V4A
1.4401 / 1.4571 (AISI 316 / 316 Ti)
- W85** Aluminium EN AW-6060

Group	STAUFF	DIN	Dimensions (mm/in)				ØD	Ordering Codes (Standard Options)
			L1	L2	B	S		
1	0		28	9,5	30	3	7	DP-1-W3
			1.10	.37	1.18	.12	.28	
1A	1		34	20	30	3	7	DP-1A-W3
			1.34	.79	1.18	.12	.28	
2	2		40,5	26	30	3	7	DP-2-W3
			1.59	1.02	1.18	.12	.28	
3	3		48	33	30	3	7	DP-3-W3
			1.89	1.30	1.18	.12	.28	
4	4		57	40	30	3	7	DP-4-W3
			2.24	1.57	1.18	.12	.28	
5	5		70	52	30	3	7	DP-5-W3
			2.76	2.05	1.18	.12	.28	
6	6		86	66	30	3	7	DP-6-W3
			3.39	2.60	1.18	.12	.28	
7	7		118	94	30	5	7	DP-7-W3
			4.65	3.70	1.18	.20	.28	
8	8		144	120	30	5	7	DP-8-W3
			5.67	4.72	1.18	.20	.28	

Alternative materials and surface finishings are available upon request. Contact STAUFF for further information.



info@iq-parts.nl
Harsweg 34A
2461 EZ Ter Aar
T +31 252 624 126
The Netherlands