

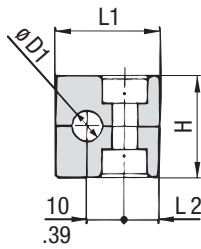
iQ parts
IQ-PARTS-SHOP.COM



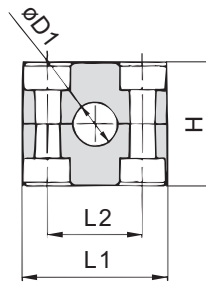
**SPECS &
INFORMATION**

Clamp Body - Type H

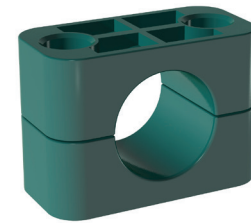
Smooth Inside Surface without Tension Clearance



STAUFF Group 1



STAUFF Group 1A to 8



A

Group	STAUFF	DIN	Outside Diameter		Ordering Codes (2 Clamp Halves)	Dimensions (mm/in)			
			Hose Ø D1 (mm)	(in)		(** - H = Material)	L1	L2	H
1	0	6			106-**-H	28	9,5	26	30
		6,4	1/4	106.4-**-H					
		8	5/16	108-**-H					
		9,5	3/8	109.5-**-H					
		10		110-**-H					
		12		112-**-H					
1A	1	6			106A-**-H	37	20	26	30
		6,4	1/4	106.4A-**-H					
		8	5/16	108A-**-H					
		9,5	3/8	109.5A-**-H					
		10		110A-**-H					
		12		112A-**-H					
2	2	12,7	1/2		212.7-**-H	42	26	32	30
		13,5		213.5-**-H					
		14		214-**-H					
		15		215-**-H					
		16	5/8	216-**-H					
		17,2		217.2-**-H					
3	3	18			218-**-H	50	33	35,5	30
		19	3/4	319-**-H					
		20		320-**-H					
		21,3		321.3-**-H					
		22	7/8	322-**-H					
		25		325-**-H					
4	4	25,4	1		325.4-**-H	59	40	41,5	30
		26,9		426.9-**-H					
		28		428-**-H					
		30		430-**-H					
		32		432-**-H					
		32	1-1/4	532-**-H					
5	5	33,7			533.7-**-H	71	52	56,5	30
		35		535-**-H					
		38	1-1/2	538-**-H					
		40		540-**-H					
		42		542-**-H					
		44,5	1-3/4	644.5-**-H					
6	6	48,3			648.3-**-H	86	66	64,5	30
		50,8	2	650.8-**-H					
		54		654-**-H					
		57,2	2-1/4	757.2-**-H					
		60,3		760.3-**-H					
		63,5	2-1/2	763.5-**-H					
7	7	70	2-3/4		770-**-H	121	94	92	30
		73		773-**-H					
		76,1	3	776.1-**-H					
		88,9		888.9-**-H					
		102	4	8102L-**-H					
8	8					147	120	116	30

Additional outside diameters are available upon request. Please contact STAUFF for further information.

Ordering Codes

Clamp Body *1*06-*PP-H
Clamp Body, STAUFF Group 1A *1*06A-*PP-H

One clamp body is consisting of two clamp halves.

- * STAUFF Group 1
- * Exact outside diameter Ø D1 (mm) 06
- * Material code (see below) PP-H

Standard Materials



Polypropylene
 Colour: Green
 Material code: **PP-H**



Polypropylene
 Colour: Black
 Material code: **PP-H-BK**



Polyamide
 Colour: Black
 Material code: **PA-H**



Thermoplastic Elastomer (87 Shore-A)
 Colour: Black
 Material code: **SA-H**

See pages 154 / 155 for material properties and technical information.

Special Materials

Please contact STAUFF for further details on fire-proof clamp body materials, tested and approved according to several international fire-protection standards (such as BS 6853, EN 45545-2, UL 94 and many more).

See pages 156 / 157 for material properties and technical information.

Product Features

- Proven, tested and trusted product in various markets
- Recommended for the safe installation of hoses and cables
- Chamfered edges avoid damaging of the hoses and cables
- Available for all commonly used hose and cable outside diameters
- Excellent weathering resistance, even under extreme conditions





info@iq-parts.nl
Harsweg 34A
2461 EZ Ter Aar
T +31 252 624 126
The Netherlands