

**iQ parts**  
IQ-PARTS-SHOP.COM

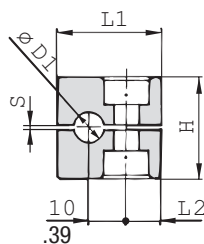
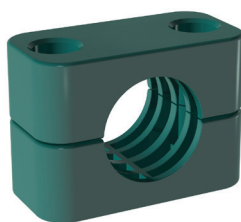


**SPECS &  
INFORMATION**

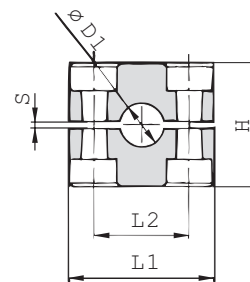
## Clamp Body - Profiled Design

Profiled Inside Surface with Tension Clearance

A



STAUFF Group 1



STAUFF Group 1A to 8

### Ordering Codes

#### Clamp Body

Clamp Body, STAUFF Group 1A

\*1\*06-\*PP

\*1\*06A-\*PP

One clamp body is consisting of two clamp halves.

\* STAUFF Group

1

\* Exact outside diameter Ø D1 (mm)

06

\* Material code (see below)

PP

### Standard Materials



#### Polypropylene

Colour: Green  
Material code: **PP**



#### Polypropylene

Colour: Black  
Material code: **PP-BK**



#### Polyamide

Colour: Black  
Material code: **PA**



#### Thermoplastic Elastomer (87 Shore-A)

Colour: Black  
Material code: **SA**



#### Aluminium

Colour: Self-Colour  
Material code: **AL** (STAUFF Group 1A to 6)

See pages 154 / 155 for material properties and technical information.

### Special Materials

Please contact STAUFF for further details on fire-proof clamp body materials, tested and approved according to several international fire-protection standards (such as BS 6853, EN 45545-2, UL 94 and many more).

See pages 156 / 157 for material properties and technical information.

### Product Features

- Proven, tested and trusted product in various markets
- Recommended for the safe installation of rigid pipes and tubes
- Available for all commonly used pipe and tube outside diameters
- Environmental protection due to vibration/noise reducing design
- Excellent weathering resistance, even under extreme conditions

Group	STAUFF	DIN	Outside Diameter		Nominal Bore	Copper Tube	Ordering Codes	Dimensions							
			Pipe / Tube	Ø D1				Pipe	ASTM B88	(2 Clamp Halves)	(mm/in)	L1	L2	H	S min.
1		0	6				106-**								
			6,4	1/4			106.4-**								
			8	5/16			108-**	28	9,5	27	0,4	30			
			9,5	3/8		1/4	109.5-**	1.10	.37	1.06	.02	1.18			
			10		1/8		110-**								
1A		1	6				106A-**								
			6,4	1/4			106.4A-**								
			8	5/16			108A-**	37	20	27	0,4	30			
			9,5	3/8		1/4	109.5A-**	1.46	.79	1.06	.02	1.18			
			10		1/8		110A-**								
2		2	12				112-**								
			12,7	1/2		3/8	212.7-**								
			13,5		1/4		213.5-**								
			14				214-**								
			15				215-**	42	26	33	0,6	30			
3		3	16	5/8		1/2	216-**	1.65	1.02	1.30	.02	1.18			
			17,2		3/8		217.2-**								
			18				218-**								
			19	3/4			319-**								
			20				320-**								
4		4	21,3		1/2		321.3-**	50	33	36	0,6	30			
			22	7/8		3/4	322-**	1.97	1.30	1.42	.02	1.18			
			25				325-**								
			25,4	1			325.4-**								
			26,9		3/4		426.9-**								
5		5	28				428-**								
			28,6			1	428.6-**	59	40	42	0,6	30			
			30				430-**	2.32	1.57	1.65	.02	1.18			
			32				432-**								
			32	1-1/4			532-**								
6		6	33,7		1		533.7-**								
			35			1-1/4	535-**								
			38	1-1/2			538-**	71	52	58	0,8	30			
			40				540-**	2.80	2.05	2.28	.03	1.18			
			41,3		1-1/2		541.3-**								
7		7	42		1-1/4		542-**								
			44,5	1-3/4			644.5-**								
			48,3		1-1/2		648.3-**	86	66	66	0,8	30			
			50,8	2			650.8-**	3.39	2.60	2.60	.03	1.18			
			54		2		654-**								
8		8	57,2	2-1/4			757.2-**								
			60,3		2		760.3-**								
			63,5	2-1/2			763.5-**	121	94	93	0,8	30			
			70	2-3/4			770-**	4.76	3.70	3.66	.03	1.18			
			73		2-1/2 (ANSI B 36-10)		773-**								
8		8	76,1	3	2-1/2 (DIN EN 10220)		776.1-**								
			88,9		3		888.9-**	147	120	118	0,8	30			
			102	4	3-1/2		8102L-**	5.79	4.72	4.65	.03	1.18			

Additional outside diameters are available upon request. Please contact STAUFF for further information.

Dimensional drawings: All dimensions in mm (in).







info@iq-parts.nl  
Harsweg 34A  
2461 EZ Ter Aar  
T +31 252 624 126  
The Netherlands