

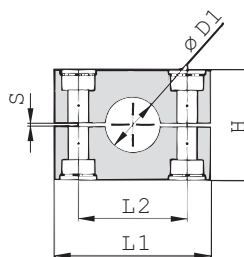
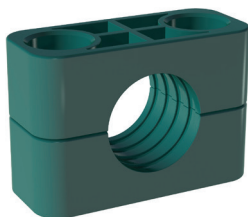
iQ parts
IQ-PARTS-SHOP.COM



**SPECS &
INFORMATION**

Clamp Body - Profiled Design

Profiled Inside Surface with Tension Clearance



B

Ordering Codes

Clamp Body

***3*006-*PP**

One clamp body is consisting of two clamp halves.

- * 1st part of STAUFF Group **3**
- * Exact outside diameter Ø D1 (mm) **006**
- * Material code (see below) **PP**

Standard Materials



Polypropylene
Colour: Green
Material code: **PP**



Polypropylene
Colour: Black
Material code: **PP-BK**



Polyamide
Colour: Black
Material code: **PA**



Thermoplastic Elastomer (87 Shore-A)
Colour: Black
Material code: **SA**



Aluminium
Colour: Self-Colour
Material code: **AL**

See pages 154 / 155 for material properties and technical information.

Special Materials

Please contact STAUFF for further details on fire-proof clamp body materials, tested and approved according to several international fire-protection standards (such as BS 6853, EN 45545-2, UL 94 and many more).

See pages 156 / 157 for material properties and technical information.

Product Features

- Proven, tested and trusted product in various markets
- Recommended for the safe installation of rigid pipes and tubes
- Available for all commonly used pipe and tube outside diameters
- Environmental protection due to vibration/noise reducing design
- Excellent weathering resistance, even under extreme conditions

Group	STAUFF	DIN	Outside Diameter		Nominal Bore		Ordering Codes (2 Clamp Halves) (** = Material)	Dimensions (mm/in)										
			Pipe / Tube Ø D1 (mm)	(in)	Pipe (in)	Copper Tube ASTM B88 (in)		L1 PP/PA/SA	L1 AL	L2	H	S min.	Width					
3S	1	6					3006-**-**	55	2.16	56	2.20	33	1.30	32	1.26	.02	30,5	
		6,4	1/4			3006.4-**-**												
		8	5/16			3008-**-**												
		9,5	3/8	1/4		3009.5-**-**												
		10		1/8		3010-**-**												
		12				3012-**-**												
		12,7	1/2	3/8		3012.7-**-**												
		13,5		1/4		3013.5-**-**												
		14				3014-**-**												
		15				3015-**-**												
		16	5/8	1/2		3016-**-**												
		17,2		3/8		3017.2-**-**												
		18				3018-**-**												
20				3020-**-**														
4S	2	19	3/4			4019-**-**	70	2.76	70	2.76	45	1.77	48	1.89	.02	30,5		
		20				4020-**-**												
		21,3		1/2		4021.3-**-**												
		22	7/8	3/4		4022-**-**												
		25				4025-**-**												
		25,4	1			4025.4-**-**												
		26,9		3/4		4026.9-**-**												
		28				4028-**-**												
		30				4030-**-**												
		30				5030-**-**												
5S	3	32	1-1/4			5032-**-**	85	3.35	85	3.35	2.36	2.36	.02	60	2.36	.02	30,5	
		33,7		1		5033.7-**-**												
		35			1-1/4	5035-**-**												
		38	1-1/2			5038-**-**												
		40				5040-**-**												
		41,3		1-1/2		5041.3-**-**												
		42		1-1/4		5042-**-**												
		38	1-1/2			6038-**-**												
		42		1-1/4		6042-**-**												
		44,5	1-3/4			6044.5-**-**												
6S	4	48,3		1-1/2		6048.3-**-**	115	4.53	120	4.72	3.54	3.50	3.50	.08	89	3.50	.08	45
		50,8	2			6050.8-**-**												
		54			2	6054-**-**												
		55				6055-**-**												
		57				6057-**-**												
		57,2	2-1/4			6057.2-**-**												
		60,3		2		6060.3-**-**												
		63,5	2-1/2			6063.5-**-**												
		65				6065-**-**												
		70	2-3/4			6070-**-**												

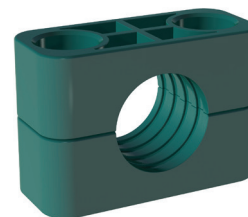
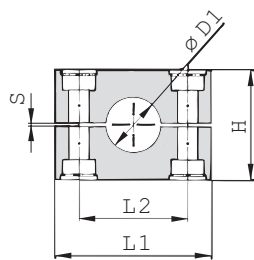
See page 37 for STAUFF Group 7S to 12S (DIN Group 5 to 10).

Additional outside diameters are available upon request. Please contact STAUFF for further information.



Clamp Body - Profiled Design

Profiled Inside Surface with Tension Clearance



B

Group	DIN	Outside Diameter		Nominal Bore	Ordering Codes (2 Clamp Halves) (** = Material)	Dimensions (mm/in)					
		Pipe / Tube Ø D1 (mm)	(in)			Pipe (in)	L1 PP/PA	L1 AL	L2	H	S min.
7S	5	60,3			7060.3-***	154	152	122	120	2	60
		65			7065-***						
		70	2-3/4		7070-***						
		73		2-1/2 (ANSI B 36-10)	7073-***						
		75			7075-***						
		76,1	3	2-1/2 (DIN EN 10220)	7076.1-***						
		80			7080-***						
		82,5			7082.5-***						
8S	6	88,9	3-1/2	3	7088.9-***	206	208	168	168	2	80
		88,9	3-1/2	3	8088.9-***						
		100			8100-***						
		102	4	3-1/2	8102-***						
		108			8108-***						
		114	4-1/2	4	8114-***						
		127	5		8127-***						
		133			8133-***						
9S	7	127	5		9127-***	251	255	205	200	3	91
		133			9133-***						
		140		5	9140-***						
		152	6		9152-***						
		159			9159-***						
		165			9165-***						
10S	8	168		6	9168-***	336	326	265	270	3	120
		177,8			10168-***						
		193,7			10177.8-***						
		203	8		10193.7-***						
		216			10203-***						
11S	9	219		8	10216-***	470	470	395	410	8	162
		219			10219-***						
		273		10	11219-***						
12S	10	324		12	11273-***	18.50	18.50	15.55	16.14	.31	6.38
		356		14	11324-***						
		406		16	12356-***						
					12406-***	24.80	24.80	21.02	20.87	.79	7.16

Ordering Codes

Clamp Body ***7*060.3-*PP**

One clamp body is consisting of two clamp halves.

* 1st part of STAUFF Group **7**
 * Exact outside diameter Ø D1 (mm) **060.3**
 * Material code (see below) **PP**

Standard Materials

- Polypropylene**
Colour: Green
Material code: **PP**
- Polypropylene**
Colour: Black
Material code: **PP-BK**
- Polyamide**
Colour: Black
Material code: **PA**
- Aluminium**
Colour: Self-Colour
Material code: **AL**

See pages 154 / 155 for material properties and technical information.

Special Materials

Please contact STAUFF for further details on fire-proof clamp body materials, tested and approved according to several international fire-protection standards (such as BS 6853, EN 45545-2, UL 94 and many more).

See pages 156 / 157 for material properties and technical information.

Product Features

- Proven, tested and trusted product in various markets
- Recommended for the safe installation of rigid pipes and tubes
- Available for all commonly used pipe and tube outside diameters
- Environmental protection due to vibration/noise reducing design
- Excellent weathering resistance, even under extreme conditions

See page 36 for STAUFF Group 3S to 6S (DIN Group 1 to 4).

Additional outside diameters are available upon request. Please contact STAUFF for further information.





info@iq-parts.nl
Harsweg 34A
2461 EZ Ter Aar
T +31 252 624 126
The Netherlands