

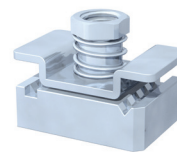
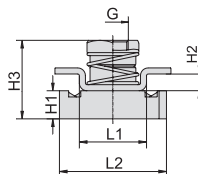
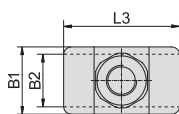
**iQparts**  
IQ-PARTS-SHOP.COM



**SPECS &  
INFORMATION**



## Channel Rail Adaptor (for Use with Various Channel Rails) Type CRA



B

Group STAUFF	DIN	Dimensions (mm/in) Thread G	L1	L2	L3	B1	B2	H1	H2	H3	Ordering Codes (Standard Options)
3S	1										
4S	2	M10 3/8-16 UNC	22 .87	35 1.38	38 1.50	22 .87	20,5 .81	9,2 .36	5,5 .22	27,5 1.08	CRA-3-5S-M-W3 CRA-3-5S-U-W3
5S	3										
6S	4	M12 7/16-14 UNC	21,5 .85	35 1.38	45 1.77	25 .98	19 .75	9,2 .36	5 .20	27,5 1.08	CRA-6S-M-W3 CRA-6S-U-W3

All threaded parts are available with Metric ISO thread or unified coarse (UNC) thread according to dimension table.  
Alternative materials and surface finishings are available upon request. Contact STAUFF for further information.

### Ordering Codes

#### Adaptor

**\*CRA-3-5S-M-W3**

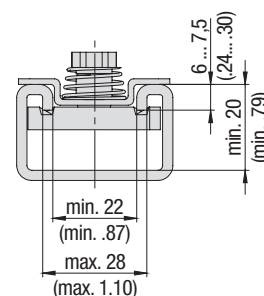
* Channel Rail Adaptor	CRA
* STAUFF Group	3S to 5S (DIN Group 1 to 3) 6S (DIN Group 4)
* Thread code	Metric ISO thread Unified coarse (UNC) thread
* Material code	Carbon Steel, zinc/nickel-plated Stainless Steel V4A 1.4401 / 1.4571 (AISI 316 / 316 Ti)

### Compatibility with Channel Rails

The STAUFF Channel Rail Adaptor, type CRA is suitable for various channel rails, including the following types:

HALFEN	HILTI	UNISTRUT®	STAUFF (Cushion Clamp Series)
HM 41/41	MQ-21, MQ-41, MQ-52, MQ-72	P1000, P1000T, P1000V, P1000VT, P1001	SCS-048-1-PL, SCS-048-1-GR
HZA 41/22	MQ-21U, MQ-41U, MQ-72U	P2000, P2000T	SCS-120-1-PL, SCS-120-1-GR
HZM 41/41	MQ-21D, MQ-41D, MQ-52-72D	P3003, P3003T, P3300V, P3300VT, P3301	See page 149 for technical information.
HZM 41/22		P4000, P4000T	
HL 41/41, HL 41/B2		P5000, P5000T, P5001, P5500, P5500T, P5501	

Contact STAUFF to check compatibility with additional types of channel rails.



Basic dimensional  
requirements for  
channel rails to be  
used with STAUFF  
Channel Rail Adaptors,  
type CRA

### Recommended Bolt Lengths when using the Channel Rail Adaptor, Type CRA

Group STAUFF	DIN	Hexagon Head Bolts AS (used with Cover Plates DPAL or DPAS) Metric ISO thread	Unified coarse (UNC) thread	Socket Cap Screws IS (used without Cover Plates DPAL or DPAS) Metric ISO thread	Unified coarse (UNC) thread
3S	1	M10 x 40	3/8-16 UNC x 1-1/2	M10 x 25	3/8-16 UNC x 1
4S	2	M10 x 55	3/8-16 UNC x 2-1/4	M10 x 40	3/8-16 UNC x 1-1/2
5S	3	M10 x 65	3/8-16 UNC x 2-3/4	M10 x 50	3/8-16 UNC x 2
6S	4	M12 x 100	7/16-14 UNC x 3-3/4	M12 x 75	7/16-14 UNC x 3

Clamp assemblies including Channel Rail Adaptors, type CRA are supplied with the recommended bolt lengths by default. See page 48 for further information on ordering.







**iq**  
**parts**  
IQ-PARTS-SHOP.COM

info@iq-parts.nl  
Harsweg 34A  
2461 EZ Ter Aar  
T +31 252 624 126  
The Netherlands