

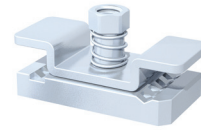
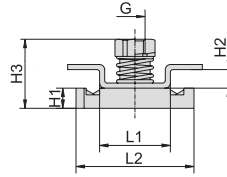
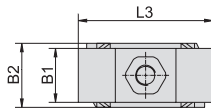
**iQ parts**  
IQ-PARTS-SHOP.COM



**SPECS &  
INFORMATION**

**Channel Rail Adaptor**  
(for Use with Various Channel Rails)  
**Type CRA**

A



Group STAUFF	DIN	Dimensions (mm/in)									Ordering Codes (Standard Options)	
		Thread G	L1	L2	L3	B1	B2	H1	H2	H3		
1	0											
1A	1											
2	2											
3	3											
4	4	M6	21	35	40	16	19	6	5,5	20,5	CRA-1-8/1D-M-W3	
		1/4-20 UNC	.83	1.38	1.57	.63	.75	.24	.22	.81	CRA-1-8/1D-U-W3	
5	5											
6	6											
7	7											
8	8											

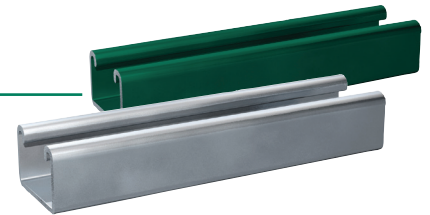
**Ordering Codes**

**Adaptor** \*CRA-\*1-8/1D-\*M-\*W3

- \* Channel Rail Adaptor **CRA**
- \* STAUFF Group 1 to 8 (DIN Group 0 to 8) **1-8/1D**
- \* Thread code Metric ISO thread **M**  
Unified coarse (UNC) thread **U**
- \* Material code Carbon Steel, zinc/nickel-plated **W3**  
Stainless Steel V4A 1.4401 / 1.4571 (AISI 316 / 316 Ti) **W5**

The Channel Rail Adaptor, type CRA 1-8/1D is also suitable for Twin Series, STAUFF Group 1D.

All threaded parts are available with Metric ISO thread or unified coarse (UNC) thread according to dimension table. Alternative materials and surface finishings are available upon request. Contact STAUFF for further information.

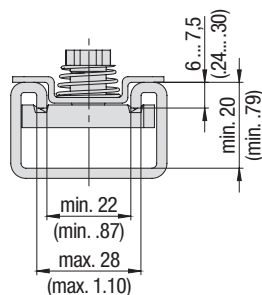


**Compatibility with Channel Rails**

The STAUFF Channel Rail Adaptor, type CRA, is suitable for various channel rails, including the following types:

HALFEN	HILTI	UNISTRUT®	STAUFF (Cushion Clamp Series)
HM 41/41	MQ-21, MQ-41, MQ-52, MQ-72	P1000, P1000T, P1000V, P1000VT, P1001	SCS-048-1-PL, SCS-048-1-GR
HZA 41/22	MQ-21U, MQ-41U, MQ-72U	P2000, P2000T	SCS-120-1-PL, SCS-120-1-GR
HZM 41/41	MQ-21D, MQ-41D, MQ-52-72D	P3003, P3003T, P3300V, P3300VT, P3301	See page 149 for technical information.
HZM 41/22		P4000, P4000T	
HL 41/41, HL 41/B2		P5000, P5000T, P5001, P5500, P5500T, P5501	

To check the compatibility with additional types of channel rail, please compare the dimensions with the following drawing before use.



**Basic dimensional requirements for channel rails to be used with STAUFF Channel Rail Adaptors, type CRA**

Dimensional drawings: All dimensions in mm (in).





info@iq-parts.nl  
Harsweg 34A  
2461 EZ Ter Aar  
T +31 252 624 126  
The Netherlands