

iQ parts
IQ-PARTS-SHOP.COM



**SPECS &
INFORMATION**

QUICK CONNECTORS

V2

V2 plastic quick connectors are an ideal means to connect media carrying lines as well as ventilation and exhaust lines in automotive industry. The connectors can be used for both line-to-line and line-to-device connections. V2 can be applied on both plastic and metal spigots.



Easily combined with other NORMA Group products such as:

- NORMA Group Fluid Systems (See page 56)

The advantages at a glance

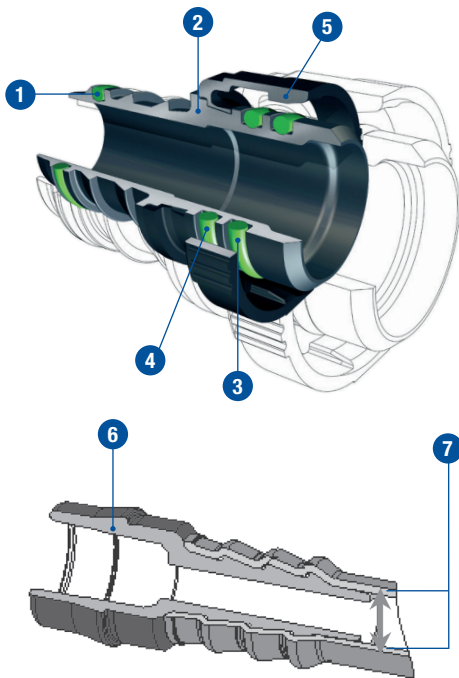
- Quick assembly time equaling cost reduction
- Automated production, no human factor means less margin of error
- No tools needed
- Compact dimensions allowing ease of use in narrow spaces
- An integrated seal provides optimal tightness
- All seals can be visually checked, permitting safe assembly
- Featuring extremely low permeation values

Technical features

- **Medium/Fluid:** Air, oil & fuel vapors
- **Long term operating temperature:** from -40°C to 135°C
- **Short term operating temperature:** up to $+150^{\circ}\text{C}$ (approx. 30 min.)

CONNECTING SPIGOT

NORMA Group standard (Production drawings will be made available on request) V2 quick connectors can be used on both plastic and metal spigots. Please note that all V2 connectors are delivered without spigot. However, we will be pleased to offer suitable spigots on request.



Insider tip

The perfectly matched system is achieved when combining quick connectors and NORMA Group Fluid Systems.



The advantages at a glance

- Fast assembly without tool – reduced time and cost
- Robot assembly possible – automated processes
- Compact dimensions – to be used in narrow spaces
- Integrated seal – optimal tightness
- The seals can be visually checked – safe assembly work

- 1 **Firtree plus O-ring (optional)**
- 2 **Housing**
- 3 **Primary O-ring**
- 4 **Secondary O-ring**
- 5 **Locking device (ring)**
- 6 **Spigot**
- 7 **Pipe inside diameter = Nominal Width (NW)**

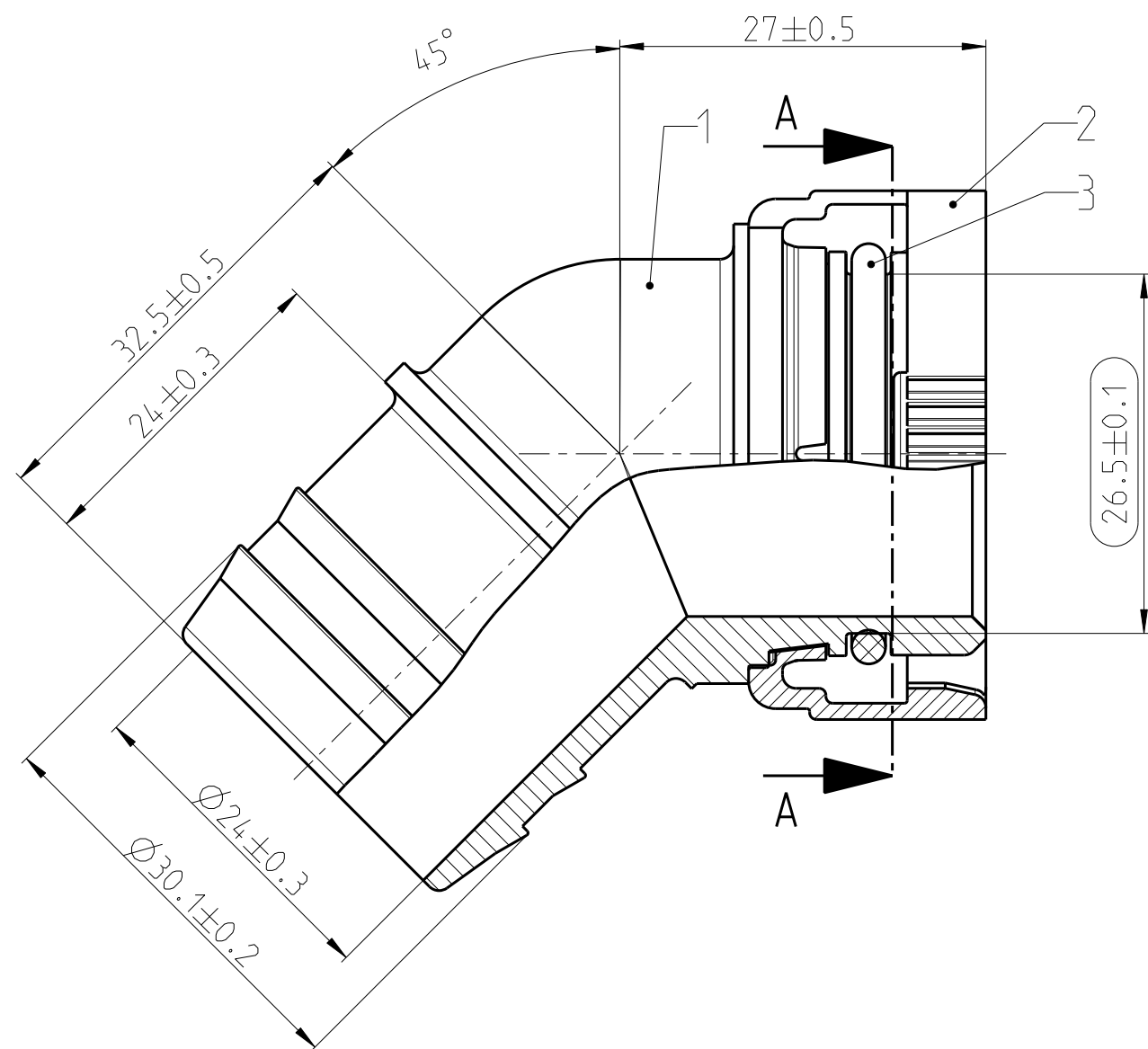
Technical features

- **Medium/Fluid:** Air, oil & fuel vapors.
- **Operating pressure:** Approx. 2,5 bar bar excess pressure
- **Operating temperature:** Engine compartment –40°C up to +135°C. Short time up to +150°C (approx. 30 min.)

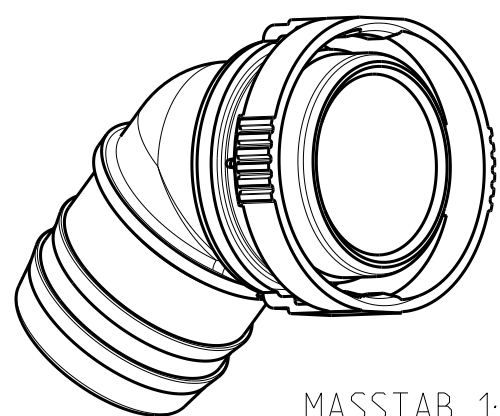
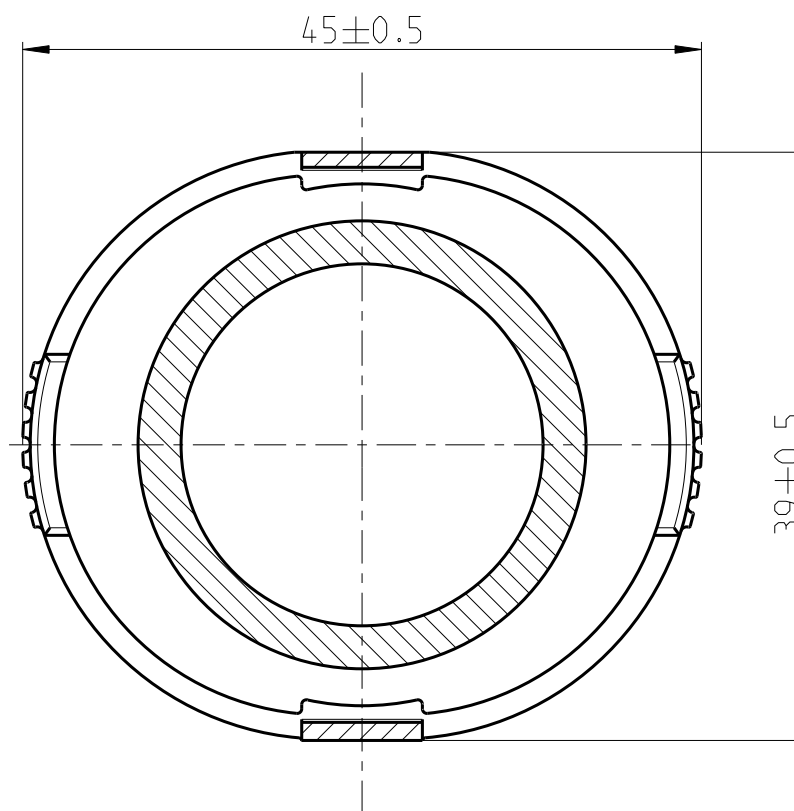
Fertigungszeichnung
MANUFACTURING DRAWING

Angebotszeichnung
QUOTATION DRAWING

Teil-Nr. ITEM-NO.	Stueck QTY.	Benennung PART - NAME	Einzelteilnummer PART-NO.	Werkstoff MATERIAL	Rohstoffnummer MATERIAL-NO.	Oberflaeche SURFACE
1	1	Stutzen NORMAQUICK V2 NW 27-45°	1713 8010 027	PA12-GF20	2036 0100 025	schwarz
2	1	Verriegelungsring NORMAQUICK V2 NW 27	1713 8005 027	PA12-GF30	2036 0100 032	schwarz
3	1	O-Ring 26 x 2.5	1067 8000 205	FPM		schwarz



SCHNITT A-A



MASSTAB 1:1

0713 8148 027

Zeichnungs-Nr./DRAWING-NO.:

Teil/PART Zeichng/DWG

INDEX Teil/ PART	Anz. Zeichg DWG	Anz. QTY.	Aenderung DESCRIPTION	Aend.Nr. CHANGE-NO.	Datum DATE	Bearb. DRAWN	Gepr. CHECKED
-	-	-	-	-	-	-	-
-	-	-	-	-	-	-	-
-	-	-	-	-	-	-	-
-	-	-	-	-	-	-	-
Allgemeintoleranz: GENERAL TOLERANCE:		Form- und Lagetoleranz: FORM AND POS. TOL.:		Abmass fuer Winkel: DEVIATION FOR ANGLE:		Gewicht / WEIGHT: errechnet CALCULATED	
DIN 16901-130		DIN ISO 2768				Volumen: VOLUME: cm ³	
Projektions-Methode 1 1st ANGLE PROJECTION DIN ISO 128-30		Material: siehe Stueckliste Material-No.: siehe Stueckliste Oberflaeche: siehe Stueckliste SURF. QUAL.:		PART NAME: NORMAQUICK V2 NW 27-45°-0°			
NORMA-Patentnummer: PATENT NUMBER:		Masstab: SCALE: 2:1	Datum/DATE 15.01.02	Name/NAME Bauer		Benennung: NORMAQUICK V2 NW 27-45°-0°	
				Strauss			
		NORMA Germany GmbH Postfach 1149 • 63461 Maintal		Zeichnungs-Nr./DRAWING-NO.:		INDEX Teil/PART Zeichng/DWG	
Ursprung/Anfrage: ENQUIRY-No.:		Schutzvermerk nach ISO 16016 beachten CONSIDER AFTER PROTECTION NOTICE ISO 16016		0713 8148 027		DIN A SHEET: 3 1 SH	
9990007347		© COPYRIGHT BY NORMA Group		SUB.F.: -		SUB.FROM: -	
CAD-SYSTEM Pro/Engineer		DRAWING-NAME: 07138148027		MODEL-NAME: 07138148027		MODEL-TYP: ASSEM	



info@iq-parts.nl
Harsweg 34A
2461 EZ Ter Aar
T +31 252 624 126
The Netherlands