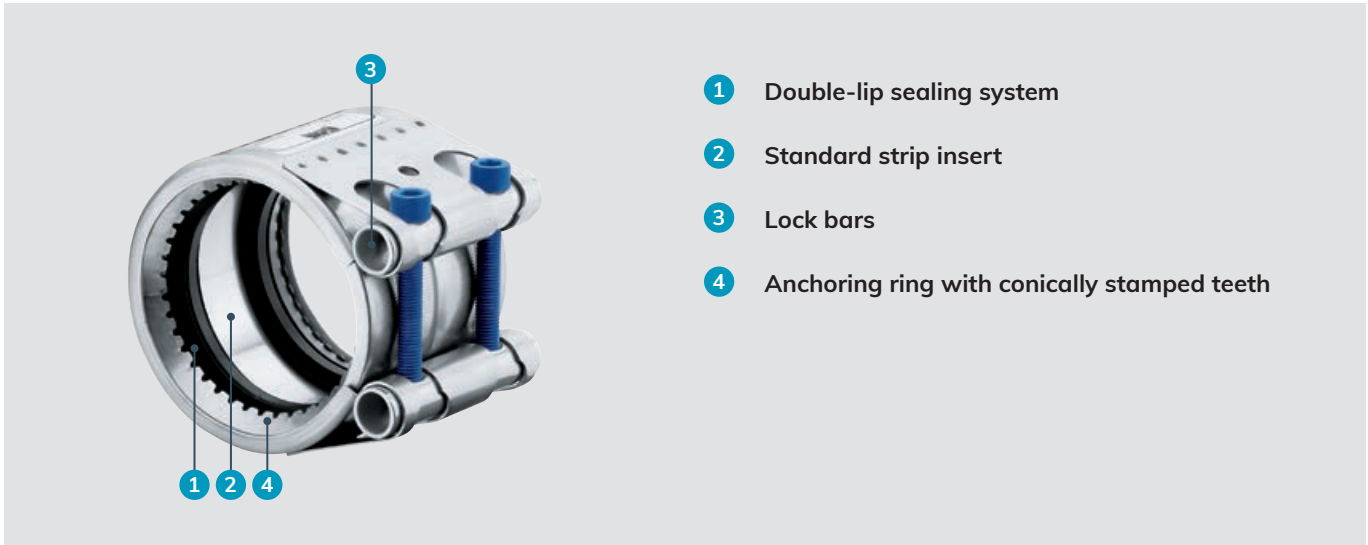


iQ parts
IQ-PARTS-SHOP.COM



**SPECS &
INFORMATION**



- 1 Double-lip sealing system
- 2 Standard strip insert
- 3 Lock bars
- 4 Anchoring ring with conically stamped teeth

The strong pipe coupling

NORMACONNECT® GRIP/GRIP E axial restraint pipe couplings are used to connect metal pipes. The anchoring ring with conically stamped teeth indents into the pipe surface (steel, stainless steel or cast iron) and provides safe and strong axial restraint. Owing to the special design, the coupling can withstand even high vibration loads.

Advantages at a glance

- ✓ Progressive locking effect ensures a trouble- and maintenance-free connection
- ✓ Reusable
- ✓ Shock resistant
- ✓ Space saving connector
- ✓ Withstand high vibration loads

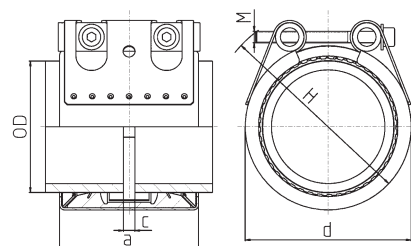
Information

- Sizes: 26.9 mm – 812.8 mm
- Working pressure: 70.0 bar – 1 bar
- Material: AISI 304, AISI 316 Ti
- EPDM:
 - Sizes from 26.9 mm up to 168.3 mm: -30 °C up to +125 °C
 - Sizes > 180.0 mm: from -20 °C up to +80 °C
- NBR: from -20 °C up to +80 °C
- FKM: -10 °C to +150 °C
(Higher temperatures possible in some cases.)



Materials

W1	W2	W3	W4	W5
	x		x	x

Technical data & Ordering information



Technical data & Ordering information

NORMACONNECT® FGR GRIP E											
Ø (O.D.)	Designation	Clamping ranges	PN ¹	WP ²	C max	Dimensions (approx.)			Weight (approx.)	Hex socket locking bolts	
		Odmin - Odmax (mm)	 [bar]	 [bar]	(mm)	a (mm)	d (mm)	H (mm)	(kg/pc.)	Thread	Tightening torque (Nm)
26.9	Grip E 26.9	26.4 - 27.5	16	70	3	67	50	70	0.32	M 8 SW 6	10
28.0	Grip E 28.0	27.5 - 28.5	16	70	3	67	50	70	0.32	M 8 SW 6	10
30.0	Grip E 30.0	29.5 - 30.6	16	70	3	67	50	70	0.32	M 8 SW 6	10
33.7	Grip E 33.7	33.0 - 34.3	16	60	3	67	55	75	0.33	M 8 SW 6	10
35.0	Grip E 35.0	34.5 - 35.6	16	60	8	63	55	75	0.45	M 8 SW 6	15
38.0	Grip E 38.0	37.5 - 38.6	16	60	8	63	60	80	0.45	M 8 SW 6	15
42.4	Grip E 42.4	41.7 - 43.0	16	50	8	63	65	85	0.46	M 8 SW 6	15
44.5	Grip E 44.5	44.0 - 45.1	16	50	8	63	65	85	0.47	M 8 SW 6	15
48.3	Grip E 48.3	47.6 - 50.5	16	50	8	63	70	90	0.48	M 8 SW 6	15
54.0	Grip E 54.0	53.3 - 54.6	16	50	17	78	75	95	0.62	M 8 SW 6	15
57.0	Grip E 57.0	56.3 - 57.7	16	50	17	78	80	100	0.63	M 8 SW 6	20
60.3	Grip E 60.3	59.5 - 61.0	16	40	17	78	85	105	0.64	M 8 SW 6	20
70.0	Grip E 70.0	69.0 - 71.0	16	40	25	98	90	110	1.21	M 10 SW 8	30
73.0	Grip E 73.0	72.1 - 73.8	16	40	25	98	95	115	1.23	M 10 SW 8	30
76.1	Grip E 76.1	75.2 - 77.0	16	35	25	98	100	120	1.23	M 10 SW 8	30
80.0	Grip E 80.0	79.0 - 80.8	16	35	25	98	100	120	1.27	M 10 SW 8	30
84.0	Grip E 84.0	83.0 - 85.0	16	35	25	98	105	125	1.29	M 10 SW 8	30
88.9	Grip E 88.9	87.0 - 89.9	16	35	25	98	110	130	1.31	M 10 SW 8	30
101.6	Grip E 101.6	100.4 - 102.8	16	35	25	98	125	145	1.45	M 10 SW 8	30
104.0	Grip E 104.0	102.8 - 106.1	16	35	25	98	125	145	1.46	M 10 SW 8	30
108.0	Grip E 108.0	106.8 - 109.2	16	35	25	98	130	150	1.49	M 10 SW 8	30
110.0	Grip E 110.0	108.8 - 111.4	16	35	25	98	130	150	1.54	M 10 SW 8	30
114.3	Grip E 114.3	113.0 - 115.5	16	35	25	98	135	155	1.54	M 10 SW 8	50
129.0	Grip E 129.0	127.6 - 131.1	16	32	35	115	155	185	2.83	M 12 SW 10	50
133.0	Grip E 133.0	131.5 - 134.4	16	32	35	115	160	190	2.93	M 12 SW 10	50
139.7	Grip E 139.7	138.1 - 141.6	16	32	35	115	165	195	3.04	M 12 SW 10	50
141.3	Grip E 141.3	139.6 - 142.8	16	32	35	115	170	200	3.04	M 12 SW 10	50
154.0	Grip E 154.0	152.3 - 156.1	16	32	35	115	180	210	3.17	M 12 SW 10	60
159.0	Grip E 159.0	157.3 - 160.7	16	32	35	115	185	215	3.28	M 12 SW 10	60
168.3	Grip E 168.3	166.5 - 170.1	16	32	35	115	195	225	3.35	M 12 SW 10	60

PN¹ (Nominal Pressure) is the max. admissible working pressure in shipbuilding, based on a safety factor of ≥ 4 .
 WP² is the max. working pressure in industrial applications, with a safety factor as per NORMA specification.

Technical data & Ordering information

NORMACONNECT® FGR GRIP E								
Ø (O.D.)	Designation	W2 Product No.		W4 Product No.		W5 Product No.		
		EPDM	NBR	EPDM	NBR	EPDM	NBR	FKM
26.9	Grip E 26.9	0579 9100 026	0579 8400 026	0579 9200 026	0579 8500 026	0579 9300 026	0579 8600 026	
28.0	Grip E 28.0	0579 9100 028	0579 8400 028	0579 9200 028	0579 8500 028	0579 9300 028	0579 8600 028	
30.0	Grip E 30.0	0579 9100 030	0579 8400 030	0579 9200 030	0579 8500 030	0579 9300 030	0579 8600 030	
33.7	Grip E 33.7	0579 9100 033	0579 8400 033	0579 9200 033	0579 8500 033	0579 9300 033	0579 8600 033	0579 9900 033
35.0	Grip E 35.0	0579 9100 035	0579 8400 035	0579 9200 035	0579 8500 035	0579 9300 035	0579 8600 035	
38.0	Grip E 38.0	0579 9100 038	0579 8400 038	0579 9200 038	0579 8500 038	0579 9300 038	0579 8600 038	0579 9900 038
42.4	Grip E 42.4	0579 9100 042	0579 8400 042	0579 9200 042	0579 8500 042	0579 9300 042	0579 8600 042	0579 9900 042
44.5	Grip E 44.5	0579 9100 044	0579 8400 044	0579 9200 044	0579 8500 044	0579 9300 044	0579 8600 044	
48.3	Grip E 48.3	0579 9100 048	0579 8400 048	0579 9200 048	0579 8500 048	0579 9300 048	0579 8600 048	0579 9900 048
54.0	Grip E 54.0	0579 9100 054	0579 8400 054	0579 9200 054	0579 8500 054	0579 9300 054	0579 8600 054	
57.0	Grip E 57.0	0579 9100 057	0579 8400 057	0579 9200 057	0579 8500 057	0579 9300 057	0579 8600 057	0579 9900 057
60.3	Grip E 60.3	0579 9100 060	0579 8400 060	0579 9200 060	0579 8500 060	0579 9300 060	0579 8600 060	0579 9900 060
63.0	Grip E 63.0	0579 9100 063	0579 8400 063	0579 9200 063	0579 8500 063	0579 9300 063	0579 8600 063	0579 9900 063
70.0	Grip E 70.0	0579 9100 070	0579 8400 070	0579 9200 070	0579 8500 070	0579 9300 070	0579 8600 070	
73.0	Grip E 73.0	0579 9100 073	0579 8400 073	0579 9200 073	0579 8500 073	0579 9300 073	0579 8600 073	
76.1	Grip E 76.1	0579 9100 076	0579 8400 076	0579 9200 076	0579 8500 076	0579 9300 076	0579 8600 076	0579 9900 076
80.0	Grip E 80.0	0579 9100 080	0579 8400 080	0579 9200 080	0579 8500 080	0579 9300 080	0579 8600 080	
84.0	Grip E 84.0	0579 9100 084	0579 8400 084	0579 9200 084	0579 8500 084	0579 9300 084	0579 8600 084	
88.9	Grip E 88.9	0579 9100 088	0579 8400 088	0579 9200 088	0579 8500 088	0579 9300 088	0579 8600 088	0579 9900 088
101.6	Grip E 101.6	0579 9100 101	0579 8400 101	0579 9200 101	0579 8500 101	0579 9300 101	0579 8600 101	
104.0	Grip E 104.0	0579 9100 104	0579 8400 104	0579 9200 104	0579 8500 104	0579 9300 104	0579 8600 104	
108.0	Grip E 108.0	0579 9100 108	0579 8400 108	0579 9200 108	0579 8500 108	0579 9300 108	0579 8600 108	
110.0	Grip E 110.0	0579 9100 110	0579 8400 110	0579 9200 110	0579 8500 110	0579 9300 110	0579 8600 110	
114.3	Grip E 114.3	0579 9100 114	0579 8400 114	0579 9200 114	0579 8500 114	0579 9300 114	0579 8600 114	0579 9900 114
129.0	Grip E 129.0	0579 9100 129	0579 8400 129	0579 9200 129	0579 8500 129	0579 9300 129	0579 8600 129	0579 9900 129
133.0	Grip E 133.0	0579 9100 133	0579 8400 133	0579 9200 133	0579 8500 133	0579 9300 133	0579 8600 133	
139.7	Grip E 139.7	0579 9100 139	0579 8400 139	0579 9200 139	0579 8500 139	0579 9300 139	0579 8600 139	0579 9900 139
141.3	Grip E 141.3	0579 9100 141	0579 8400 141	0579 9200 141	0579 8500 141	0579 9300 141	0579 8600 141	
154.0	Grip E 154.0	0579 9100 154	0579 8400 154	0579 9200 154	0579 8500 154	0579 9300 154	0579 8600 154	
159.0	Grip E 159.0	0579 9100 159	0579 8400 159	0579 9200 159	0579 8500 159	0579 9300 159	0579 8600 159	
168.3	Grip E 168.3	0579 9100 168	0579 8400 168	0579 9200 168	0579 8500 168	0579 9300 168	0579 8600 168	0579 9900 168

NORMACONNECT®

FGR GRIP



NORMACONNECT® GRIP axial restraint pipe couplings are used to connect metal pipes.

Material

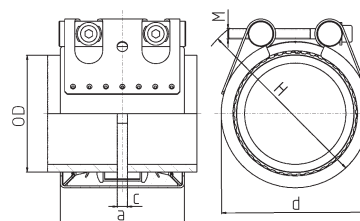
W2, W4, W5

NORMACONNECT® FGR GRIP											
Ø (O.D.)	Designation	Clamping ranges O _{dmin} - O _{dmax} (mm)	PN ¹  [bar]	WP ²  [bar]	C max (mm)	Dimensions (approx.)			Weight (approx.) (kg/pc.)	Hex socket locking bolts	
						a (mm)	d (mm)	H (mm)		Thread	Tightening torque (Nm)
193.7	Grip 193.7	192.0 - 196.0	16	32	35	142	225	255	6.8	M 16 SW 14	150
206.0	Grip 206.0	202.0 - 208.0	16	32	35	142	240	270	7.0	M 16 SW 14	150
219.1	Grip 219.1	216.0 - 221.0	16	32	35	142	250	280	7.3	M 16 SW 14	150
225.0	Grip 225.0	222.0 - 227.0	13	26.5	35	142	255	285	7.4	M 16 SW 14	180
229.9	Grip 229.9	228.0 - 232.0	13	26	35	142	260	290	7.5	M 16 SW 14	180
244.5	Grip 244.5	242.0 - 247.0	12	24.5	35	142	275	305	7.7	M 16 SW 14	180
254.0	Grip 254.0	250.0 - 256.0	11.5	22.5	35	142	285	315	7.9	M 16 SW 14	180
267.0	Grip 267.0	264.0 - 269.0	11	22.5	35	142	300	330	8.2	M 16 SW 14	180
273.0	Grip 273.0	270.0 - 275.0	11	22	35	142	305	335	8.3	M 16 SW 14	180
306.0	Grip 306.0	302.0 - 308.0	9.5	19.5	35	142	340	370	8.9	M 16 SW 14	180
323.9	Grip 323.9	320.0 - 327.0	6.5	13	35	142	355	385	9.2	M 16 SW 14	180
326.0	Grip 326.0	322.0 - 329.0	6.5	13	35	142	360	390	9.3	M 16 SW 14	180
355.6	Grip 355.6	352.0 - 359.0	6	12	35	142	390	420	9.8	M 16 SW 14	180
406.4	Grip 406.4	402.0 - 410.0	4.5	9	35	142	440	470	10.8	M 16 SW 14	180
429.0	Grip 429.0	426.0 - 431.0	4	8.5	35	142	460	490	11.3	M 16 SW 14	180
442.0	Grip 442.0	439.0 - 444.0	4	8	35	142	475	505	11.5	M 16 SW 14	180
457.2	Grip 457.2	454.0 - 459.0	4	8	35	142	490	520	11.8	M 16 SW 14	180
508.0	Grip 508.0	505.0 - 510.0	2.5	5	35	142	540	570	12.7	M 16 SW 14	180
531.0	Grip 531.0	528.0 - 534.0	2.5	5	35	142	565	595	13.2	M 16 SW 14	180
558.8	Grip 558.8	556.0 - 562.0	2	4.5	35	142	590	620	13.7	M 16 SW 14	180
609.6	Grip 609.6	606.0 - 613.0	1.5	3	35	142	640	670	14.7	M 16 SW 14	180
634.0	Grip 634.0	631.0 - 637.0	1.5	3	35	142	665	695	15.1	M 16 SW 14	200
711.2	Grip 711.2	707.0 - 715.0	1.5	2.5	35	142	745	775	16.6	M 16 Sw 14	200

PN¹ (Nominal Pressure) is the max. admissible working pressure in shipbuilding, based on a safety factor of ≥ 4 .

WP² is the max. working pressure in industrial applications, with a safety factor as per NORMA specification.

Technical data & Ordering information



NORMACONNECT® FGR GRIP							
Ø (O.D.)	Designation	W2 Product No.		W4 Product No.		W5 Product No.	
		EPDM	NBR	EPDM	NBR	EPDM	NBR
193.7	Grip 193.7	0577 8100 193	0577 8400 193	0577 8200 193	0577 8500 193	0577 8300 193	0577 8600 193
206.0	Grip 206.0	0577 8100 206	0577 8400 206	0577 8200 206	0577 8500 206	0577 8300 206	0577 8600 206
219.1	Grip 219.1	0577 8100 219	0577 8400 219	0577 8200 219	0577 8500 219	0577 8300 219	0577 3600 219
225.0	Grip 225.0	0577 8100 225	0577 8400 225	0577 8200 225	0577 8500 225	0577 8300 225	0577 8600 225
229.9	Grip 229.9	0577 8100 229	0577 8400 229	0577 8200 229	0577 8500 229	0577 8300 229	0577 8600 229
244.5	Grip 244.5	0577 8100 244	0577 8400 244	0577 8200 244	0577 8500 244	0577 8300 244	0577 8600 244
254.0	Grip 254.0	0577 8100 254	0577 8400 254	0577 8200 254	0577 8500 254	0577 8300 254	0577 8600 254
267.0	Grip 267.0	0577 8100 267	0577 8400 267	0577 8200 267	0577 8500 267	0577 8300 267	0577 8600 267
273.0	Grip 273.0	0577 8100 273	0577 8400 273	0577 8200 273	0577 8500 273	0577 8300 273	0577 3600 273
306.0	Grip 306.0	0577 8100 306	0577 8400 306	0577 8200 306	0577 8500 306	0577 8300 306	0577 8600 306
323.9	Grip 323.9	0577 8100 323	0577 8400 323	0577 8200 323	0577 8500 323	0577 8300 323	0577 8600 323
326.0	Grip 326.0	0577 8100 326	0577 8400 326	0577 8200 326	0577 8500 326	0577 8300 326	0577 8600 326
355.6	Grip 355.6	0577 8100 355	0577 8400 355	0577 8200 355	0577 8500 355	0577 8300 355	0577 8600 355
406.4	Grip 406.4	0577 8100 406	0577 8400 406	0577 8200 406	0577 8500 406	0577 8300 406	0577 8600 406
429.0	Grip 429.0	0577 8100 429	0577 8400 429	0577 8200 429	0577 8500 429	0577 8300 429	0577 8600 429
442.0	Grip 442.0	0577 8100 442	0577 8400 442	0577 8200 442	0577 8500 442	0577 8300 442	0577 8600 442
457.2	Grip 457.2	0577 8100 457	0577 8400 457	0577 8200 457	0577 8500 457	0577 8300 457	0577 8600 457
508.0	Grip 508.0	0577 8100 508	0577 8400 508	0577 8200 508	0577 8500 508	0577 8300 508	0577 8600 508
531.0	Grip 531.0	0577 8100 531	0577 8400 531	0577 8200 531	0577 8500 531	0577 8300 531	0577 8600 531
558.8	Grip 558.8	0577 8100 558	0577 8400 558	0577 8200 558	0577 8500 558	0577 8300 558	0577 8600 558
609.6	Grip 609.6	0577 8100 609	0577 8400 609	0577 8200 609	0577 8500 609	0577 8300 609	0577 8600 609
634.0	Grip 634.0	0577 8100 634	0577 8400 634	0577 8200 634	0577 8500 634	0577 8300 634	0577 8600 634
711.2	Grip 711.2	0577 8100 711	0577 8400 711	0577 8200 711	0577 8500 711	0577 8300 711	0577 8600 711



info@iq-parts.nl
Harsweg 34A
2461 EZ Ter Aar
T +31 252 624 126
The Netherlands