

iQ parts
IQ-PARTS-SHOP.COM

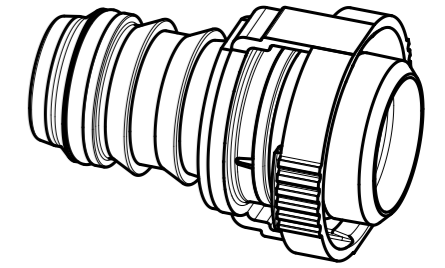
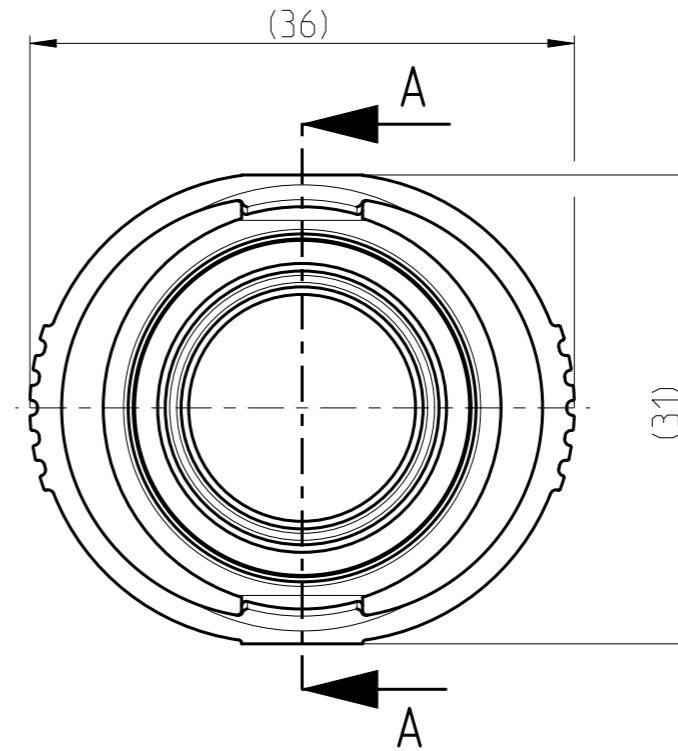
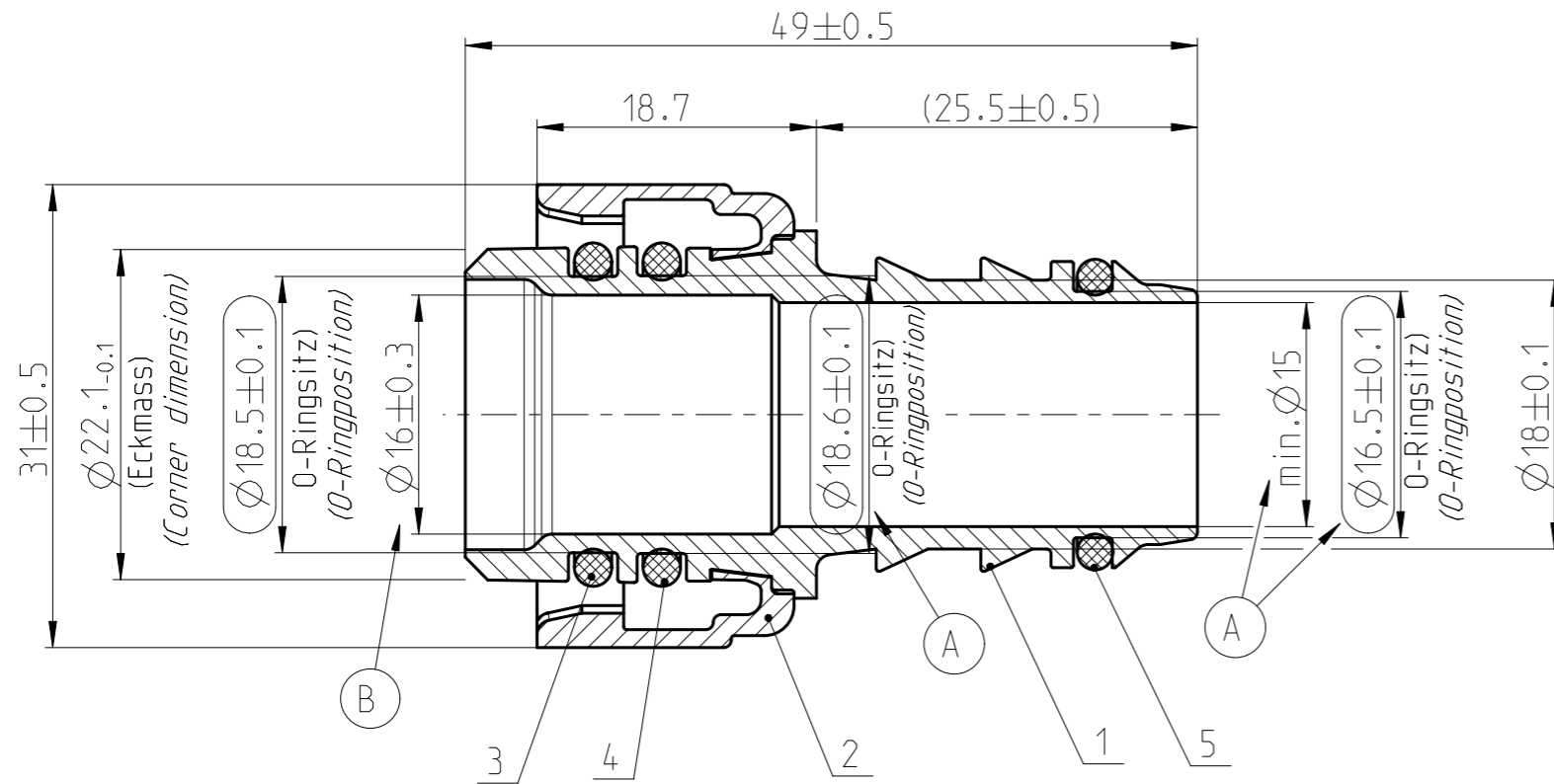


**SPECS &
INFORMATION**

QUOTATION DRAWING

Teil-Nr ITEM-NO	Stueck QTY	Benennung PART - NAME	Werkstoff MATERIAL	Oberflaeche SURFACE
1	1	Housing NW 19-17.5-0°	PA12-GF20	black
2	1	LOCKING RING NW 19	PA12-GF30	black
3	1	O-RING 18.0 X 2.5	FPM	black
4	1	O-RING 18.00 X 2.50	HNBR	brown
5	1	O-RING 16 X 2.4	FPM	black

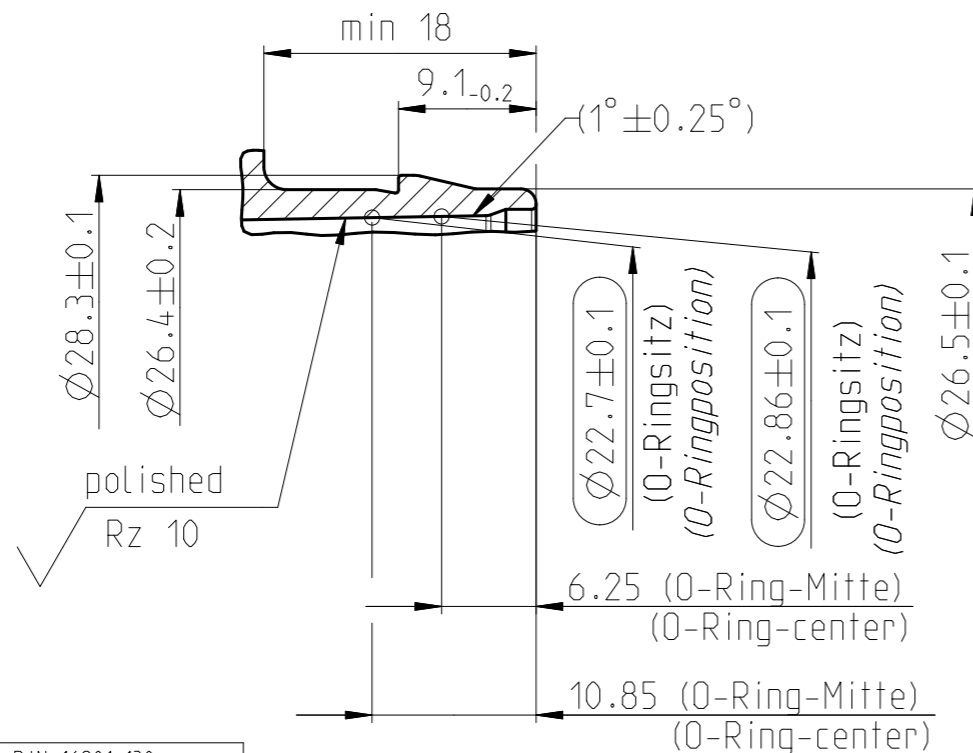
SCHNITT/SECTION A-A



MASSTAB/SCALE 1:1

Stutzen/Spigot NW 19

MASSTAB/SCALE 2:1
1713 8015 019



NORMAQUICK - ASSEMBLY MARKING	
Customer part-No.:	-
Trademark:	-
Manufacturer code:	NORMA
NORMA date code:	XX YY
Material code molding part:	>PA12-GF20<

GENERAL TOLERANCE:	DIN 16901-130
FORM AND POS. TOL.:	DIN ISO 2768
DEVIATION FOR ANGLE:	±2°

INDEX PART	DWG	QTY	REVISION SUMMARY	CHANGE-NO	DATE	DRAWN	CHECKED
-	C	-	M & Q drawings separated;	-	2021-11-12	A.Tikambare	Reuter
-	B	1	Mass $\varnothing 16 \pm 0.3$ hinzu	600428	2000-12-07	Bauer	Strauss
-	A	3	Pruefmasse hinzu , (19.7±0.4) war 19.7±0.4 , min. $\varnothing 15$ nun durchgehend	600158	2000-04-05	Imago-Gr	Pescheck

1st ANGLE PROJECTION		ACCORDING TO:			PART NAME:	
		SCALE:	DATE: YYYY-MM-DD	NAME		
		2:1	1999-11-02	KH/SK		
		MM	CHECKED			

PROJECT-NO.:	NORMA Germany GmbH	CUSTOMER:	CUSTOMER-NO.:
9990007682	Postfach 1149 63461 Maintal	-	-
CAD-SYSTEM:	(C) COPYRIGHT NORMA GROUP	NORMA-NO.:	INDEX PART DWG
Creo 3.0 M140	DIN ISO 16016	0713 8108 019	- C
DRAWING-NAME.:	07138108019_Q		TYPE FORMAT SHEET
			Q A3 1/1



info@iq-parts.nl
Harsweg 34A
2461 EZ Ter Aar
T +31 252 624 126
The Netherlands