

iQ parts
IQ-PARTS-SHOP.COM

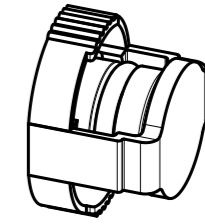
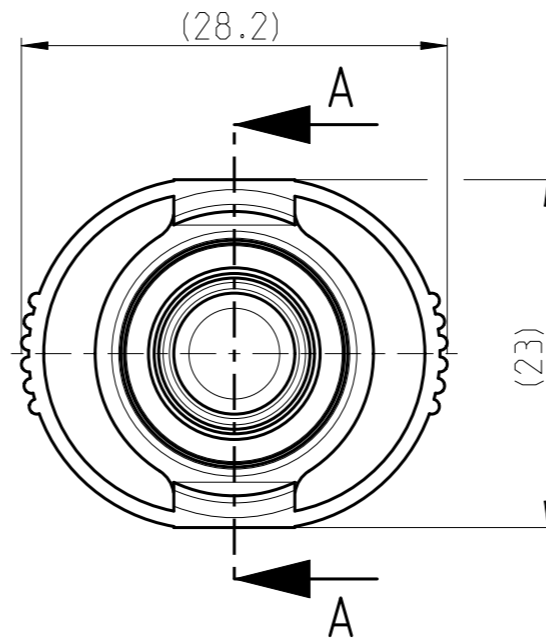
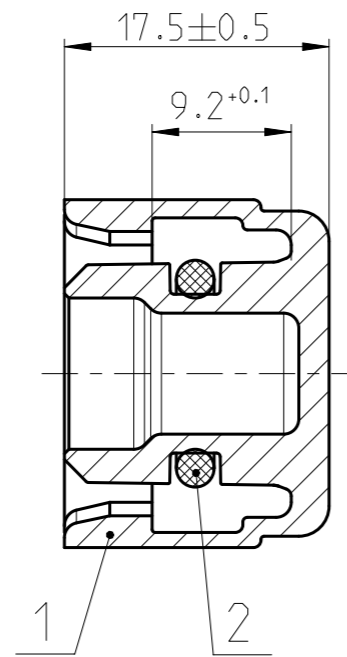


**SPECS &
INFORMATION**

QUOTATION DRAWING

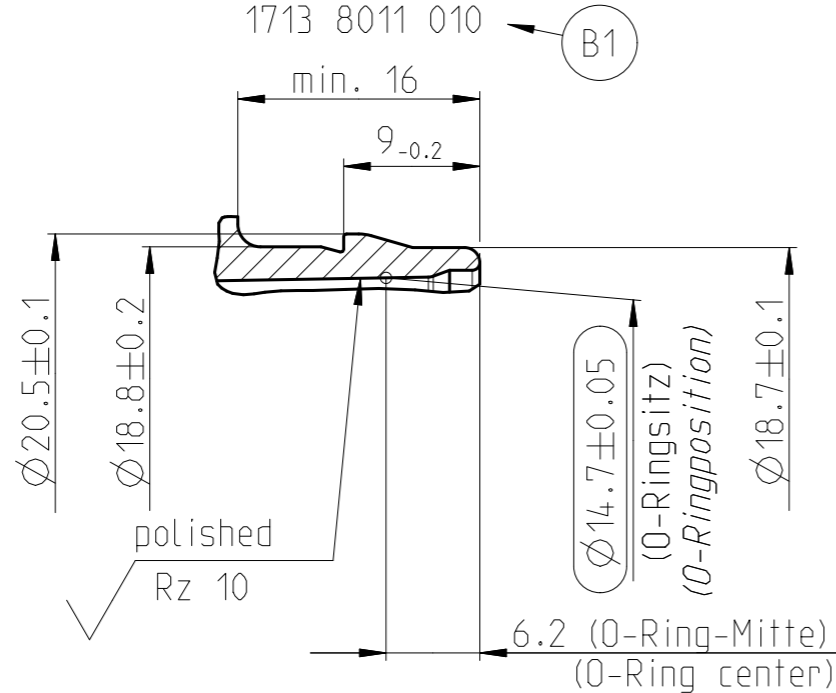
Teil-Nr ITEM-NO	Stueck QTY	Benennung PART - NAME	Werkstoff MATERIAL	Oberflaeche SURFACE
1	1	Housing V2 NW 10	PA6-GF30	black
2	1	O-RING 10.0 X 2.5	FPM	black

SCHNITT/SECTION A-A



MASSSTAB/SCALE 1:1

Stutzen/Spigot NW 10
MASSSTAB/SCALE 2:1
1713 8011 010



NORMAQUICK - ASSEMBLY MARKING	
Customer part-No.:	-
Trademark:	-
Manufacturer code:	NORMA
NORMA date code:	-
Material code molding part:	>PA6-GF30<



INDEX PART	DWG	QTY	REVISION SUMMARY	CHANGE-NO	DATE	DRAWN	CHECKED
-	-	-	-	-	-	-	-
-	B	1	Drawing frame updated acc. to latest NORMA standard 1) Spigot No. added	-	2016-11-04	Herrmann	Reuter
-	A	1	NORMA date code entfernt/removed	-	2013-12-16	Herrmann	Senftleben

1st ANGLE PROJECTION	ACCORDING TO:	PART NAME:	
	SCALE: 2:1	NORMAQUICK V2 NW 10	
	DATE: YYYY-MM-DD	Blind plug	
	DRAWN: 2001-03-26	CUSTOMER: -	
	CHECKED: -	CUSTOMER-NO: -	
PROJECT-NO.: 9900010000-011	NORMA Germany GmbH Postfach 1149 63461 Maintal	NORMA GROUP	
CAD-SYSTEM: Creo 3.0 M090	(C) COPYRIGHT NORMA GROUP DIN ISO 16016	NORMA-NO.: 0713 8040 010	INDEX PART DWG: B Q
DRAWING-NAME: 07138040010_Q			TYPE: Q
			FORMAT: A3
			SHEET: 1/1

GENERAL TOLERANCE:	DIN 16901-130
FORM AND POS. TOL.:	-
DEVIATION FOR ANGLE:	-



info@iq-parts.nl
Harsweg 34A
2461 EZ Ter Aar
T +31 252 624 126
The Netherlands