

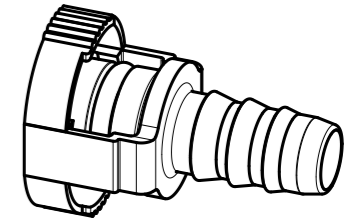
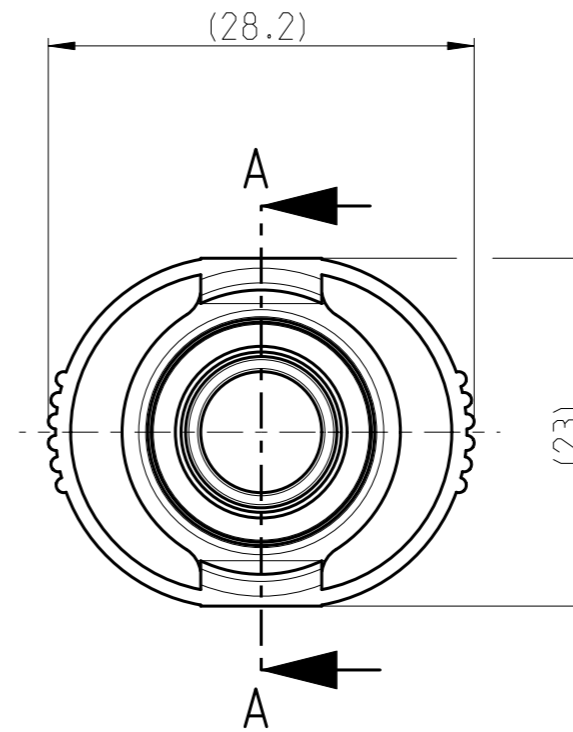
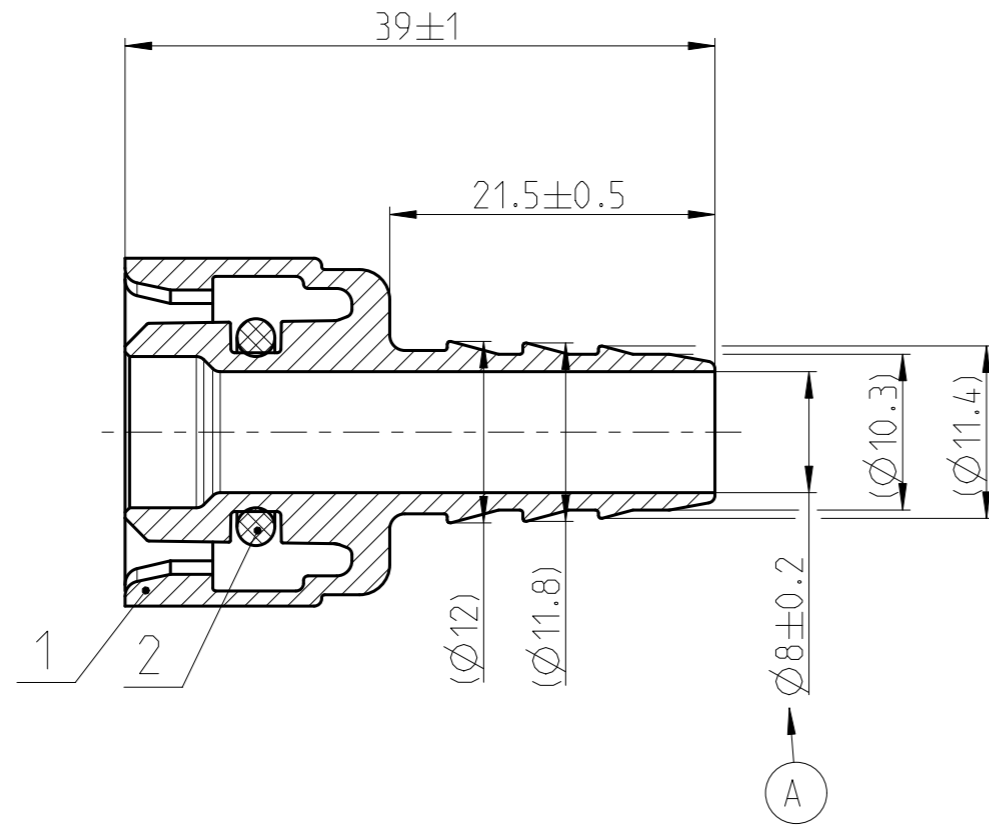
**iQ parts**  
IQ-PARTS-SHOP.COM



**SPECS &  
INFORMATION**

Teil-Nr ITEM-NO	Stueck QTY	Benennung PART - NAME	Werkstoff MATERIAL	Oberflaeche SURFACE
1	1	Housing NW 10-10-0*	PA6-GF30	black
2	1	O-RING 10.0 X 2.5	FPM	black

SCHNITT/SECTION A-A



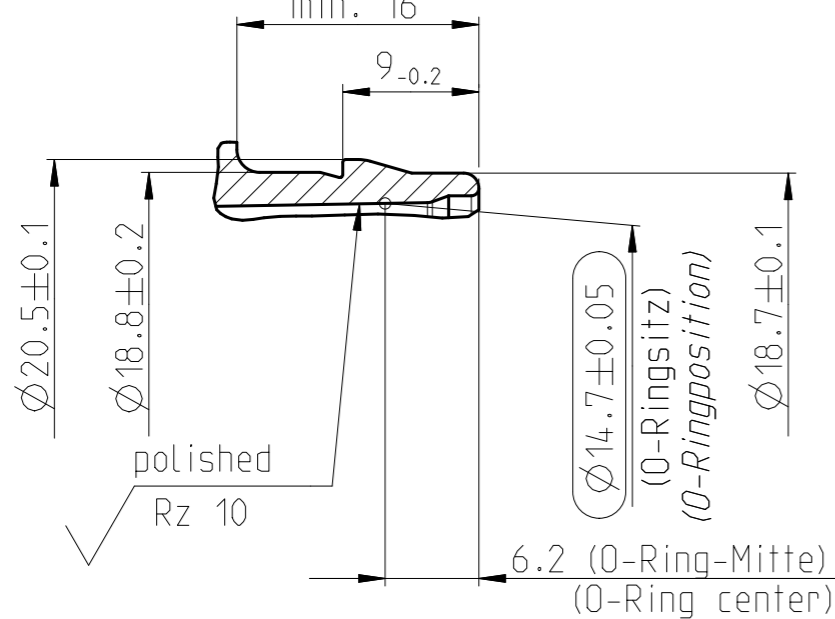
MASSTAB/SCALE 1:1

Stutzen/Spigot NW 10

MASSTAB/SCALE 2:1

1713 8011 010

min. 16



B1

NORMAQUICK - ASSEMBLY MARKING	
Customer part-No.:	-
Trademark:	-
Manufacturer code:	NORMA
NORMA date code:	XX YY
Material code molding part:	>PA6-GF30<

INDEX PART	DWG	QTY	REVISION SUMMARY	CHANGE-NO	DATE	DRAWN	CHECKED
-	-	-	-	-	-	-	-
-	-	-	-	-	-	-	-
-	B	1	Drawing separated; 1) Marking table added;	-	2016-05-31	Tandle	Reuter
-	A	1	Toleranz hinzu	600650	2001-06-19	Bauer	Strauss

1st ANGLE PROJECTION		ACCORDING TO:			PART NAME:	
		SCALE:	DATE: YYYY-MM-DD	NAME		NORMAQUICK V2 NW 10-0° Version short head
		2:1	2000-01-27	Bauer		
		MM	-	Bahner		
PROJECT-NO.:	NORMA Germany GmbH Postfach 1149 63461 Maintal			CUSTOMER:		CUSTOMER-NO.:
9990006812				-		-
CAD-SYSTEM:	(C) COPYRIGHT NORMA GROUP DIN ISO 16016			NORMA-NO.:		INDEX PART DWG TYPE FORMAT SHEET
Creo 3.0 M110				0713 8033 010		- B Q A3 1/1
DRAWING-NAME.: 07138033010_Q						



info@iq-parts.nl  
Harsweg 34A  
2461 EZ Ter Aar  
T +31 252 624 126  
The Netherlands