

iQ parts
IQ-PARTS-SHOP.COM

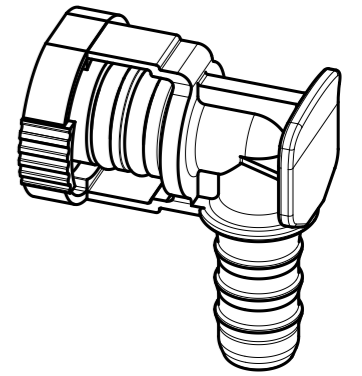
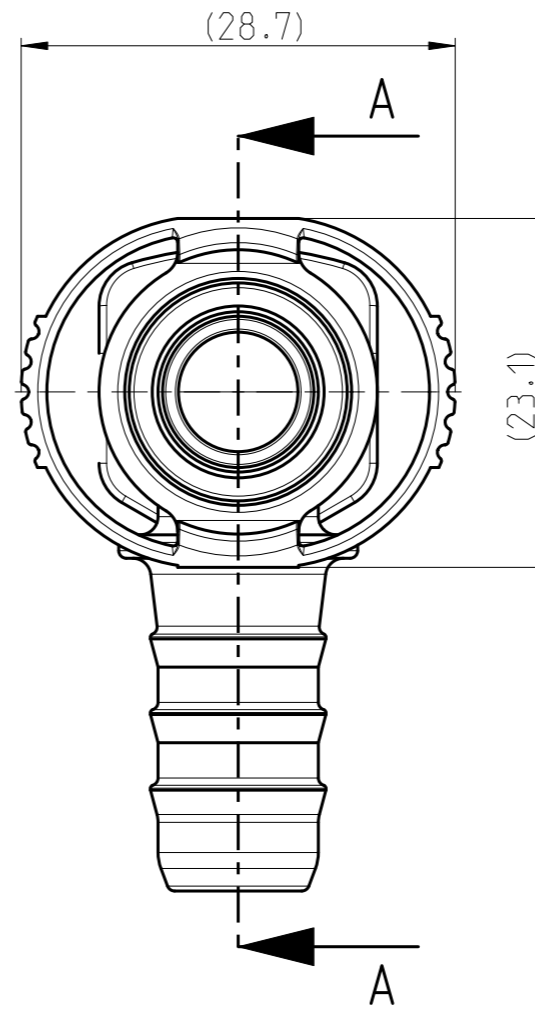
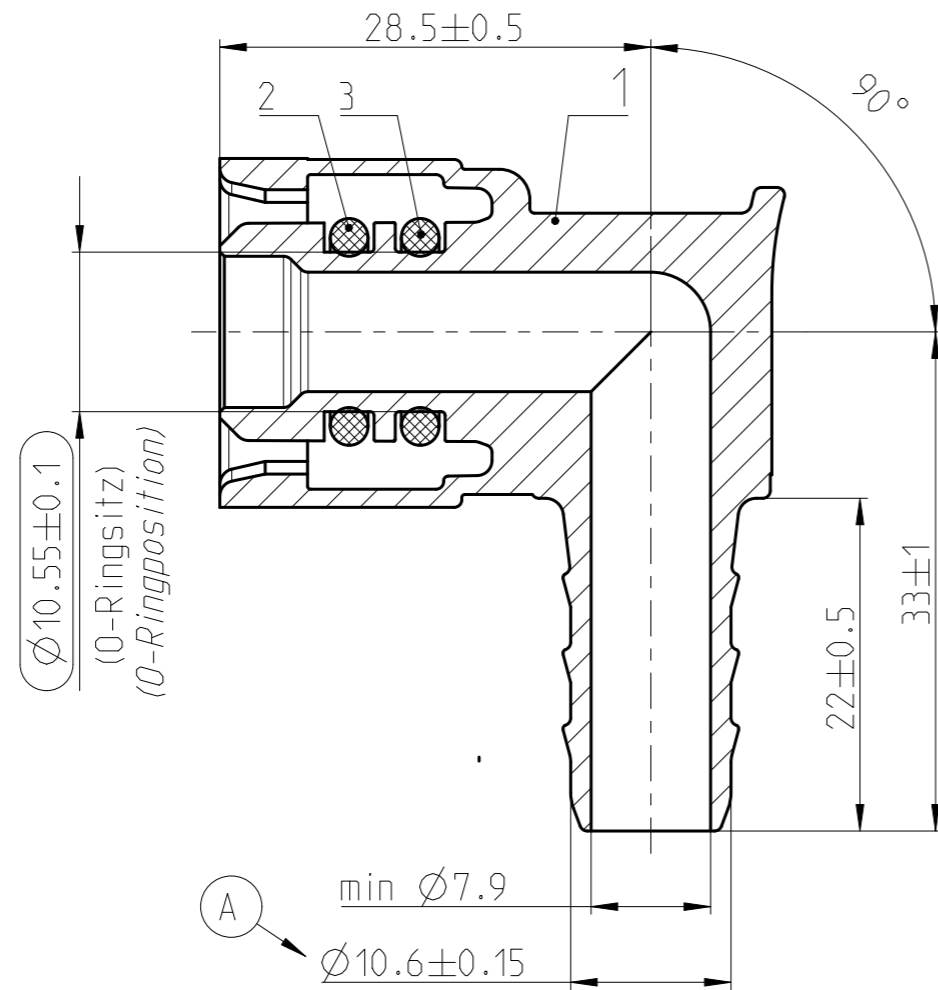


**SPECS &
INFORMATION**

QUOTATION DRAWING

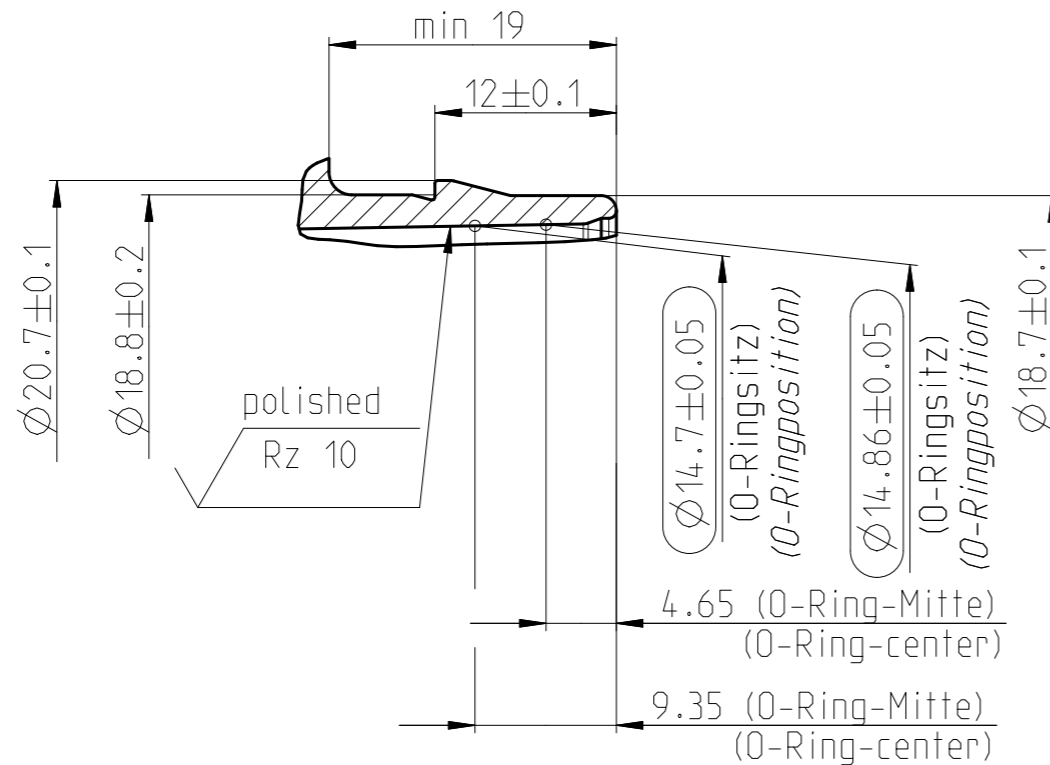
SCHNITT/SECTION A-A

Teil-Nr ITEM-NO	Stueck QTY	Benennung PART - NAME	Werkstoff MATERIAL	Oberflaeche SURFACE
1	1	Housing NW 10-10-90 *	PA6-GF30	black
2	1	O-RING 10.0 X 2.5	FKM	black
3	1	O-RING 10.0 X 2.5	HNBR	brown



MASSSTAB/SCALE 1:1

Stutzen/Spigot NW 10
 MASSSTAB/SCALE 2:1
 1713 8012 010



NORMAQUICK - ASSEMBLY MARKING	
Customer part-No.:	-
Trademark:	-
Manufacturer code:	NORMA
NORMA date code:	XX YY
Material code molding part:	>PA6-GF30<

INDEX PART DWG	QTY	REVISION SUMMARY	CHANGE-NO	DATE	DRAWN	CHECKED
-	-	-	-	-	-	-
-	-	-	-	-	-	-
-	B	Zeichnungstrennung / drawing separation	-	2018-04-19	Reichl	Reuter
-	A	war $\varnothing 10.6 \pm 0.1$	601026	2008-03-02	Bauer	Strauss

1st ANGLE PROJECTION		ACCORDING TO:		PART NAME:	
		SCALE: 2:1	DATE: YYYY-MM-DD	NORMAQUICK V2 NW 10-10-90 °	
		MM	1999-11-18	with thumb edition	
				CUSTOMER:	CUSTOMER-NO:
				-	-
PROJECT-NO.: 9990007240	NORMA Germany GmbH Postfach 1149 63461 Maintal				
CAD-SYSTEM: Creo 3.0 M140	(C) COPYRIGHT NORMA GROUP DIN ISO 16016		NORMA-NO.: 0713 8029 010	INDEX PART DWG: B	TYPE FORMAT SHEET: Q A3 1/1
DRAWING-NAME.: 07138029010_Q					



info@iq-parts.nl
Harsweg 34A
2461 EZ Ter Aar
T +31 252 624 126
The Netherlands