

iQ parts
IQ-PARTS-SHOP.COM

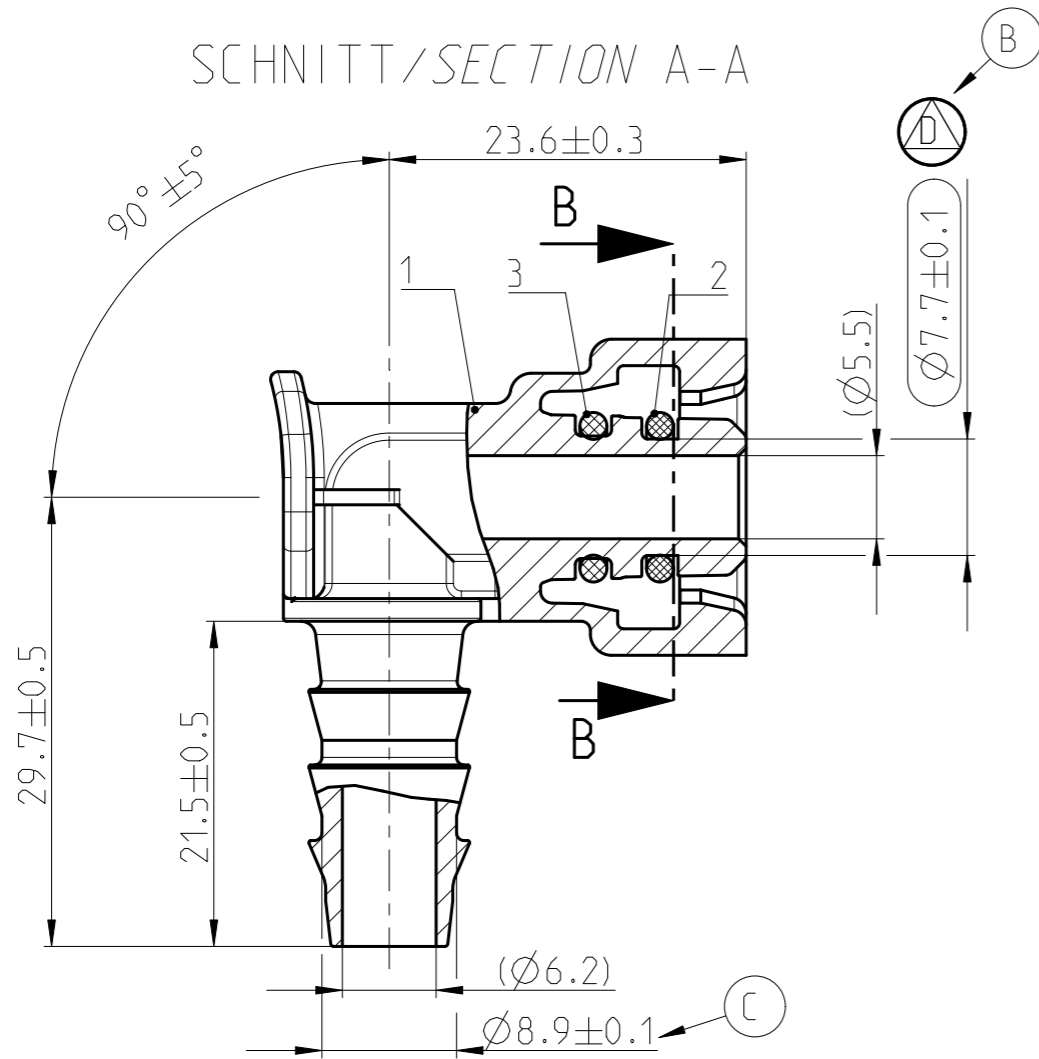


**SPECS &
INFORMATION**

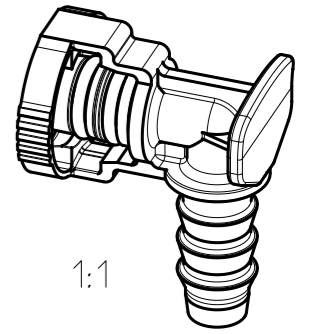
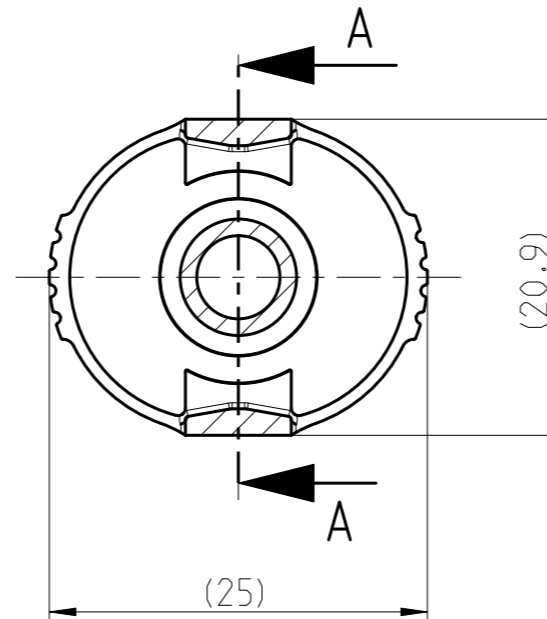
QUOTATION DRAWING

Teil-Nr ITEM-NO	Stueck QTY	Benennung PART - NAME	Werkstoff MATERIAL	Oberflaeche SURFACE
1	1	NORMA-Jet V2 NW 8 90°	PA6-GF30	Black
2	1	O-RING 7.65 X 1.78	FPM	Black
3	1	O-RING 7.65 X 1.78	HNBR	Brown

SCHNITT/SECTION A-A

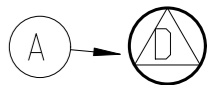
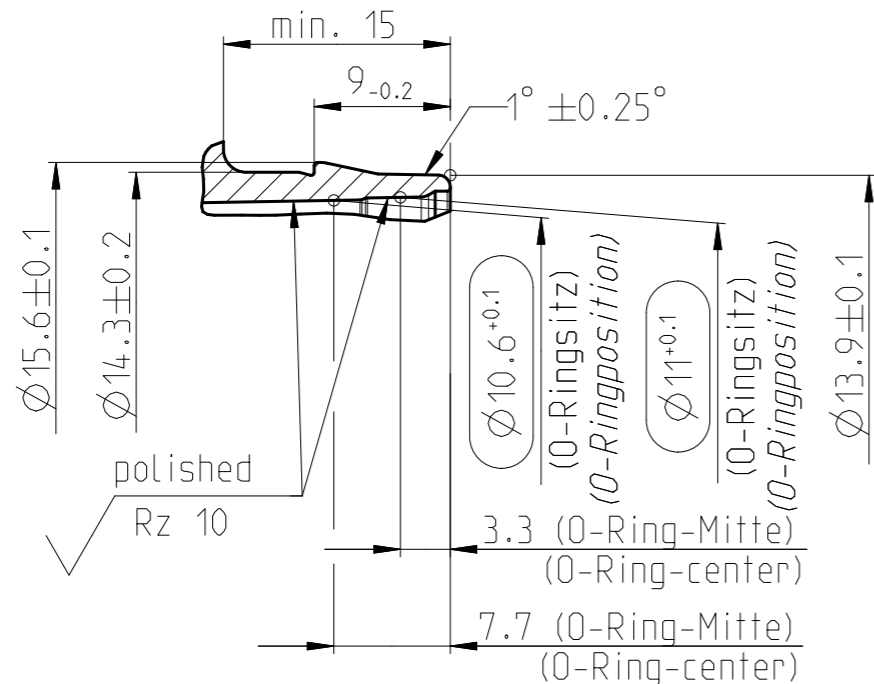


SCHNITT/SECTION B-B



1:1

Stutzen/Spigot NW06, NW07, NW08
 MASSSTAB/SCALE 2:1
 1713 8012 006



NORMAQUICK - ASSEMBLY MARKING	
Customer part-No.:	-
Trademark:	-
Manufacturer code:	NORMA
NORMA date code:	XX YY
Material code molding part:	>PA6-GF30 <

INDEX PART	DWG	QTY	REVISION SUMMARY	CHANGE-NO	DATE	DRAWN	CHECKED
-	G	1	O-ring changed	-	2022-05-05	A.Tikambare	Reuter
-	F	-	M and Q drawings are separated	-	2022-04-08	A.Tikambare	Reuter
-	E	-	Zeichnungsrahmen neu	2537/97	1997-11-11	Bauer	-
-	D	-	Detail Y hinzugefuegt	1498/96	1996-09-16	Bauer	Bahner
-	C	-	Ø8.9±0.1 war Ø8.9+0.1/-0.3, Ø6.2+1 war Ø6.2±0.2, Ø10.6±0.2 war Ø10.6±0.1	1404/96	1996-07-23	Bauer	Bahner
-	B	-	min. 3 war 1.5±0.2, 0.2±0.1 war 0.2, min. 2.2 und Symbol D-Teil hinzugefuegt	1386/96	1996-07-10	Bauer	Bahner
-	A	-	1.75 war 1.6, 1.75 war 1.6, Symbol D-Teil hinzugefuegt	1363/96	1996-06-27	Bauer	Bahner

1st ANGLE PROJECTION		ACCORDING TO:			PART NAME:	
	SCALE:	DATE: YYYY-MM-DD	NAME		NORMAQUICK V2 NW 8-90°	
	2:1	1996-04-15	Bauer			
	MM	-	Bahner			
PROJECT-NO.:	NORMA Germany GmbH		CUSTOMER:		CUSTOMER-NO.:	
9990001421	Postfach 1149 63461 Maintal		-		-	
CAD-SYSTEM:	(C) COPYRIGHT NORMA GROUP		NORMA-NO.:		INDEX PART DWG	
Creo 8.0 8.0.1.0	DIN ISO 16016		0713 8010 008		TYPE FORMAT SHEET	
DRAWING-NAME.: 07138010008_Q			-		Q A3 1/1	

GENERAL TOLERANCE:	DIN 16901-130
FORM AND POS. TOL.:	DIN ISO 2768
DEVIATION FOR ANGLE:	±2°



info@iq-parts.nl
Harsweg 34A
2461 EZ Ter Aar
T +31 252 624 126
The Netherlands