

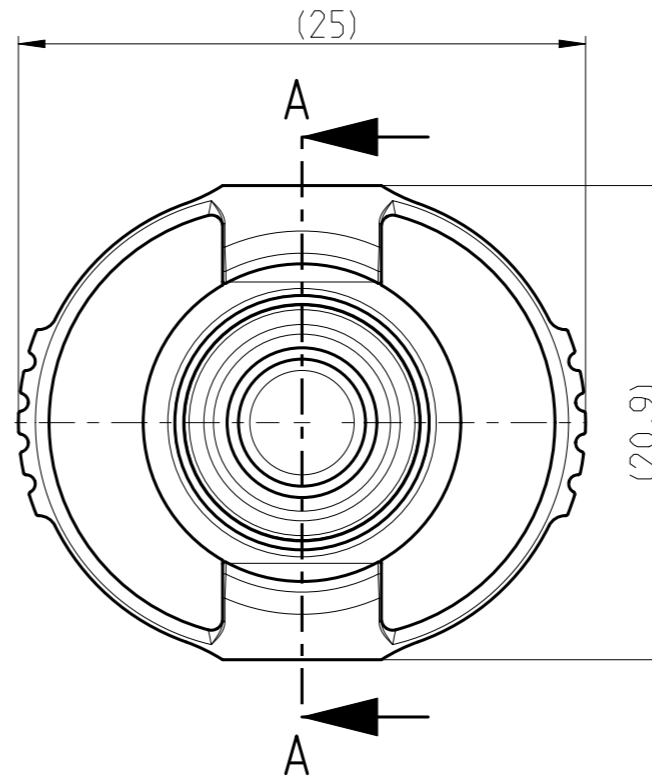
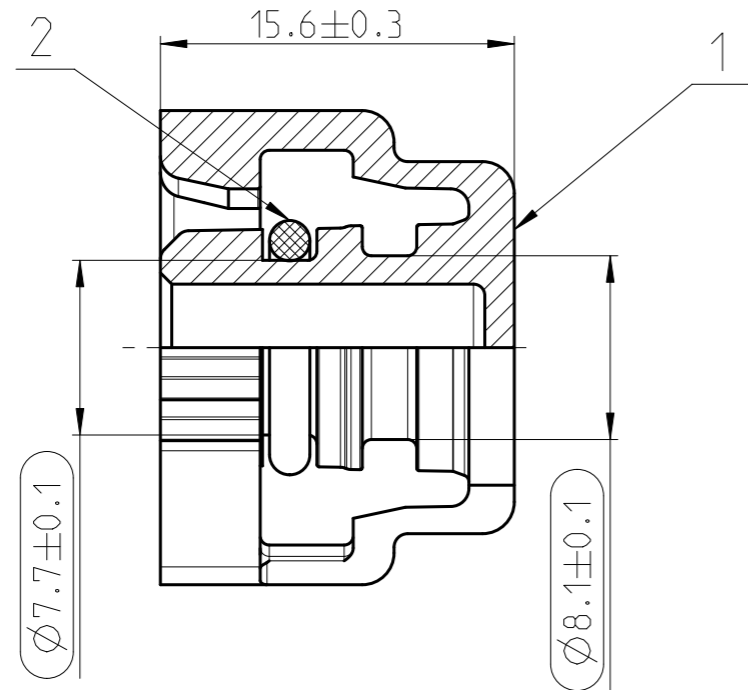
**iQ parts**  
IQ-PARTS-SHOP.COM



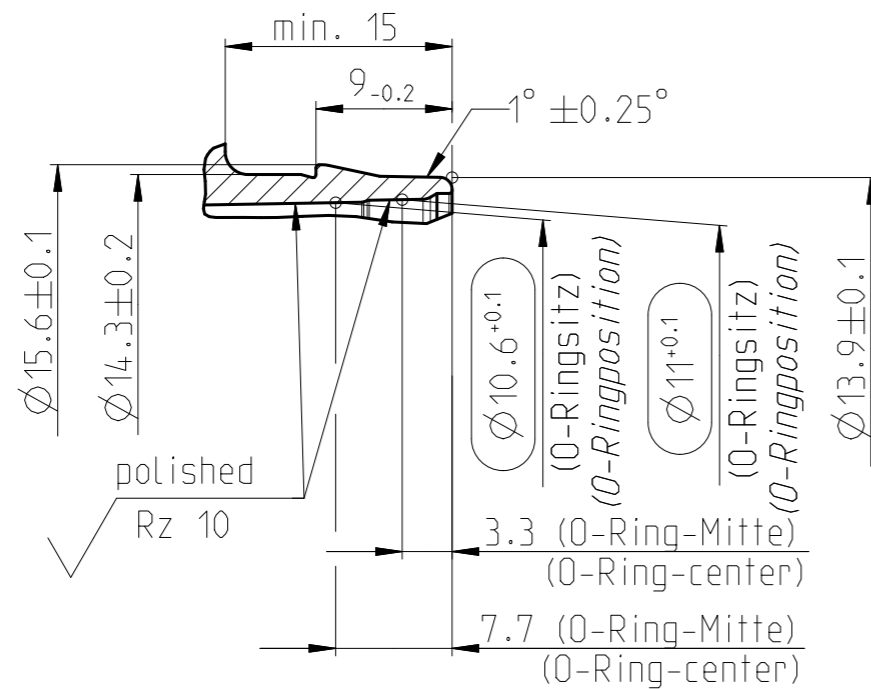
**SPECS &  
INFORMATION**

Teil-Nr ITEM-NO	Stueck QTY	Benennung PART - NAME	Werkstoff MATERIAL	Oberflaeche SURFACE
1	1	Blind plug V2 NW6-7-8	PA6-GF30	black
2	1	O-RING 7.65 X 1.78	FPM	black

SCHNITT / SECTION A-A



Stutzen/Spigot NW06, NW07, NW08  
 MASSSTAB / SCALE 2:1  
 1713 8012 006



NORMAQUICK - ASSEMBLY MARKING	
Customer part-No.:	-
Trademark:	-
Manufacturer code:	NORMA
NORMA date code:	XX YY
Material code molding part:	>PA6-GF30<

INDEX PART	DWG	QTY	REVISION SUMMARY	CHANGE-NO	DATE	DRAWN	CHECKED
-	-	-	-	-	-	-	-
-	-	-	-	-	-	-	-
-	-	-	-	-	-	-	-
-	A	-	drawing separated	-	Reichl	Reuter	2019-01-04

1st ANGLE PROJECTION	ACCORDING TO: -	PART NAME:	Blind plug NW6-7-8 for NORMAQUICK V2			
	SCALE: 3:1	DATE: YYYY-MM-DD	NAME			
	MM	DRAWN 1997-03-26	MM/SK			
		CHECKED -	-			
PROJECT-NO.: 9990003861	NORMA Germany GmbH Postfach 1149 63461 Maintal	CUSTOMER: -	CUSTOMER-NO: -			
CAD-SYSTEM: Creo 3.0 M140	(C) COPYRIGHT NORMA GROUP DIN ISO 16016	NORMA-NO.: 0713 8009 007	INDEX PART DWG	TYPE	FORMAT	SHEET
DRAWING-NAME: 07138009007_Q			-	A	Q	A3 1/1





info@iq-parts.nl  
Harsweg 34A  
2461 EZ Ter Aar  
T +31 252 624 126  
The Netherlands