

**iQ parts**  
IQ-PARTS-SHOP.COM

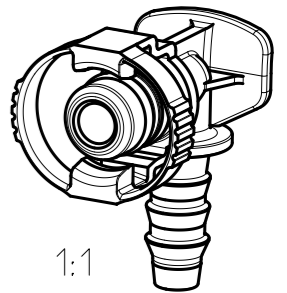
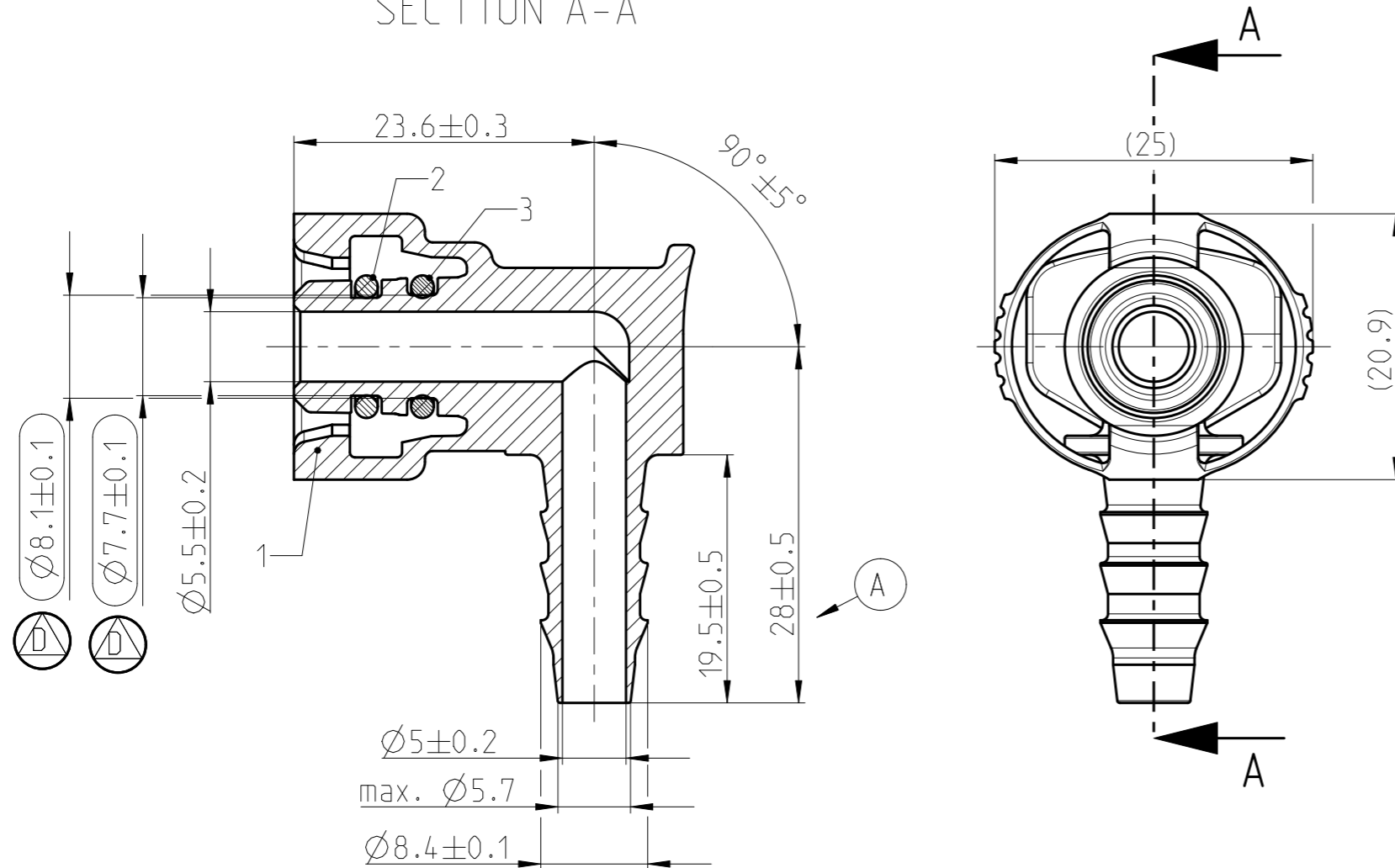


**SPECS &  
INFORMATION**

QUOTATION DRAWING

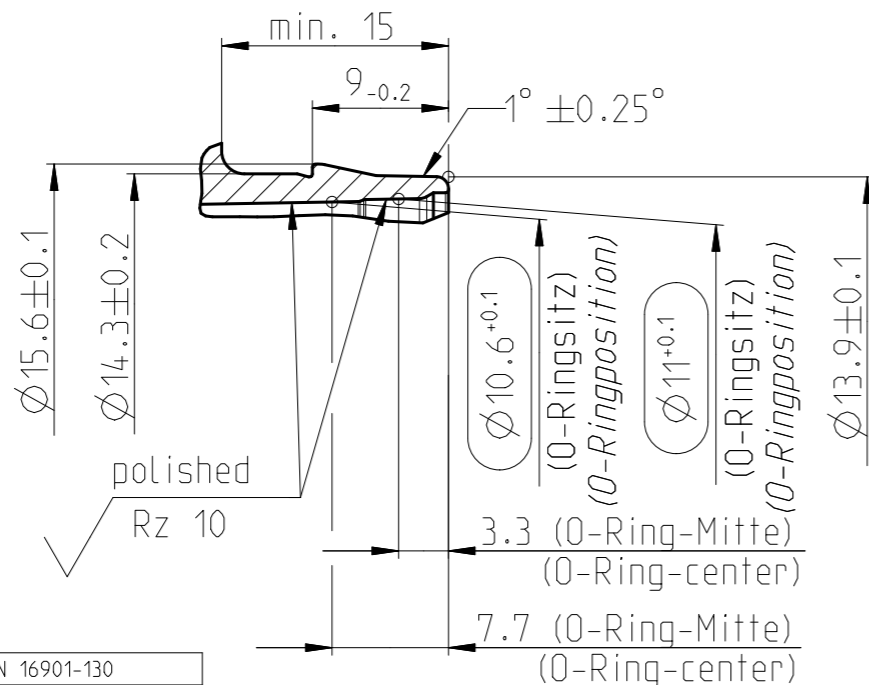
Teil-Nr ITEM-NO	Stueck QTY	Benennung PART - NAME	Werkstoff MATERIAL	Oberflaeche SURFACE
1	1	Norma-Jet V2 NW 6 90°	PA6-GF30	Black
2	1	O-RING 7.65 X 1.78	FKM	Black
3	1	O-RING 7.65 X 1.78	HNBR	Brown

SECTION A-A



Stutzen/Spigot NW 06, NW 07, NW 08  
 MASSSTAB/SCALE 2:1  
 1713 8012 006

Test Marking:



GENERAL TOLERANCE:	DIN 16901-130
FORM AND POS. TOL.:	DIN ISO 2768
DEVIATION FOR ANGLE:	±2°

NORMAQUICK - ASSEMBLY MARKING	
Customer part-No.:	-
Trademark:	-
Manufacturer code:	NORMA
NORMA date code:	XX YY
Material code molding part:	>PA6-GF30<

INDEX PART	DWG	QTY	REVISION SUMMARY	CHANGE-NO	DATE	DRAWN	CHECKED
-	D	-	M and Q drawings are separated	-	2022-04-14	A.Tikambare	Reuter
-	C	1	Zeichnung ueberarbeitet	2930/98	1998-04-01	Bauer	-
-	B	1	Detail Y hinzugefuegt	1486/96	1996-09-04	Bauer	Bahner
-	A	1	28±0.5 war 27.7±0.5	1473/96	1996-09-04	Bauer	Bahner

1st ANGLE PROJECTION		ACCORDING TO:		PART NAME:	
		SCALE: 2:1	DATE: YYYY-MM-DD	NORMAQUICK V2 NW 6-6-90°-0°	
		MM	1996-07-10		
		CHECKED	-		
PROJECT-NO.: 9990001421		NORMA Germany GmbH Postfach 1149 63461 Maintal		CUSTOMER-NO.: -	
CAD-SYSTEM: Creo 8.0 8.0.1.0		(C) COPYRIGHT NORMA GROUP DIN ISO 16016		CUSTOMER: -	
DRAWING-NAME.: 07138006006_Q		NORMA-NO.: 0713 8006 006		INDEX PART DWG	TYPE FORMAT SHEET
				- D Q	A3 1/1



info@iq-parts.nl  
Harsweg 34A  
2461 EZ Ter Aar  
T +31 252 624 126  
The Netherlands