

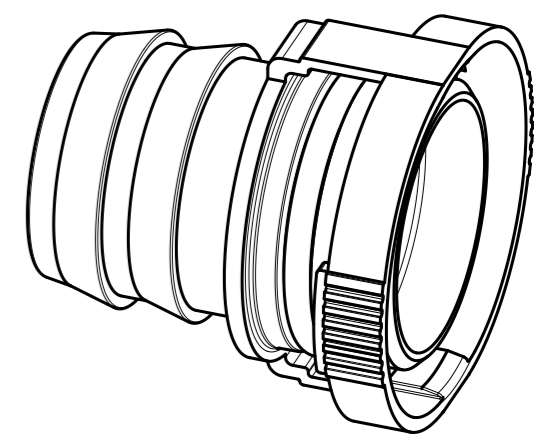
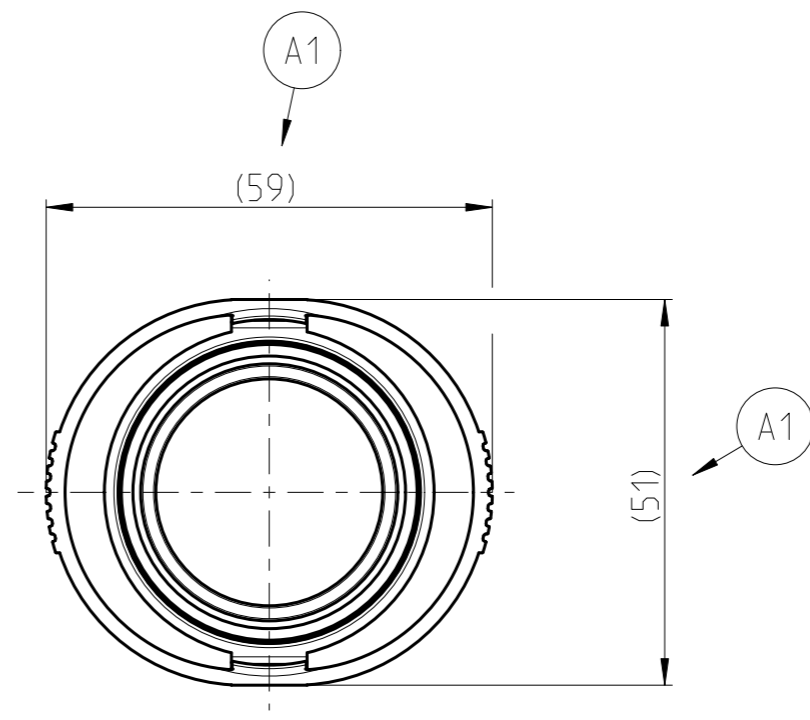
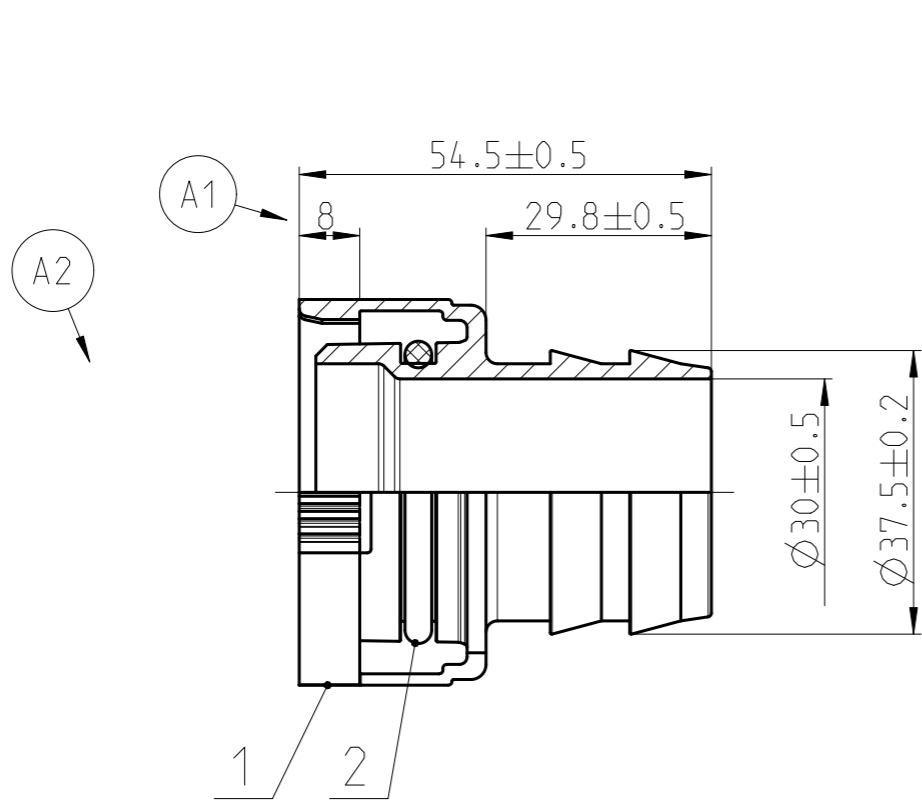
iQ parts
IQ-PARTS-SHOP.COM



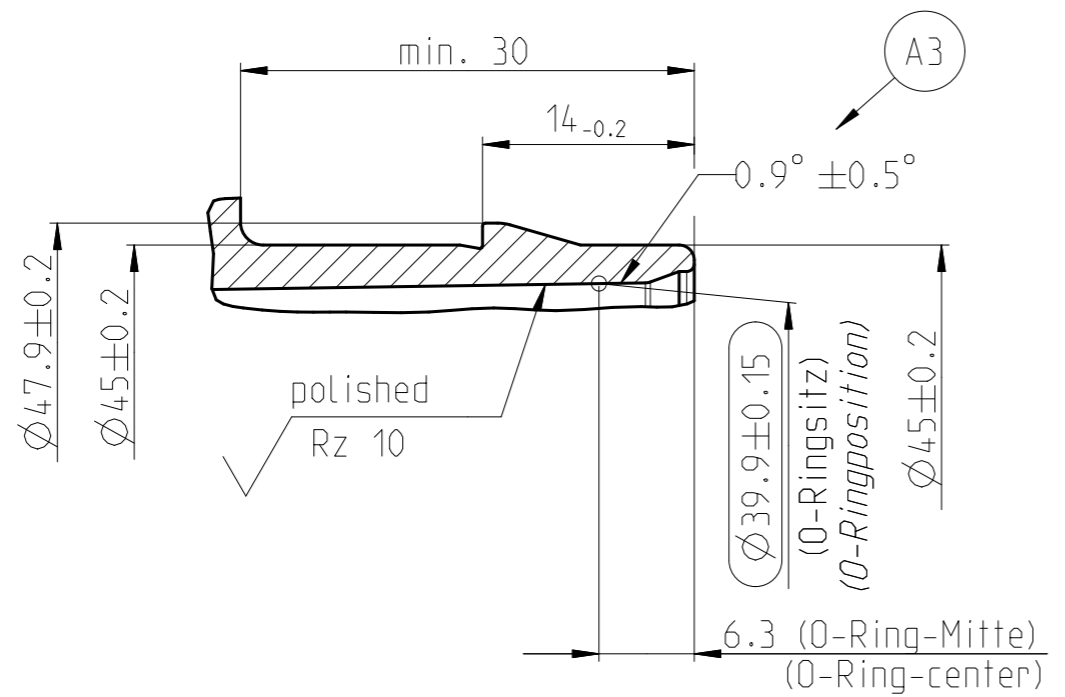
**SPECS &
INFORMATION**

QUOTATION DRAWING

Teil-Nr ITEM-NO	Stueck QTY	Benennung PART - NAME	Werkstoff MATERIAL	Oberflaeche SURFACE
1	1	Housing NW 33-0°	PA6-GF30	black
2	1	O-RING 32.92 X 3.53	FPM	green



Stutzen/Spigot NW 33
MASSSTAB/SCALE 2:1



NORMAQUICK - ASSEMBLY MARKING	
Customer part-No.:	-
Trademark:	-
Manufacturer code:	NORMA
NORMA date code:	XX YY
Material code molding part:	>PA6-GF30<

INDEX PART	DWG	QTY	REVISION SUMMARY	CHANGE-NO	DATE	DRAWN	CHECKED
-	-	-	-	-	-	-	-
-	-	-	-	-	-	-	-
B	-	-	drawing separation	-	2017-02-02	Reichl	Senftleben
A	5	-	1) Masse hinzu; 2) Text hinzu; 3) Ansicht hinzu 1) dimensions added; 2) note added; 3) view added	-	2011-09-16	Walter	Strauss

1st ANGLE PROJECTION	ACCORDING TO:	-	PART NAME:	NORMAQUICK V2 NW 33-0°				
	SCALE:	1:1	DATE: YYYY-MM-DD	NAME				
	DRAWN	2004-04-22	2004-04-22	Schwab.				
	CHECKED	2004-04-22	2004-04-22	Bahlke				
PROJECT-NO.:	9900010000-003		NORMA Germany GmbH Postfach 1149 63461 Maintal	CUSTOMER:	-			
CAD-SYSTEM:	Creo 3.0 M110		(C) COPYRIGHT NORMA GROUP DIN ISO 16016	NORMA-NO.:	0713 8004 033			
DRAWING-NAME.:	07138004033_Q			INDEX PART	DWG	TYPE	FORMAT	SHEET
				B	Q	A3	1/1	

GENERAL TOLERANCE:	DIN 16901-130
FORM AND POS. TOL.:	DIN ISO 2768
DEVIATION FOR ANGLE:	±2°



info@iq-parts.nl
Harsweg 34A
2461 EZ Ter Aar
T +31 252 624 126
The Netherlands