

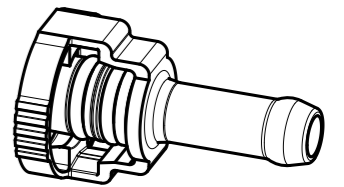
iQ parts
IQ-PARTS-SHOP.COM



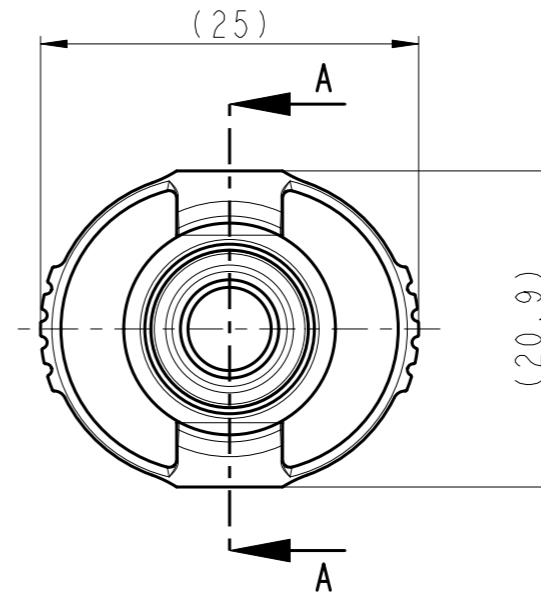
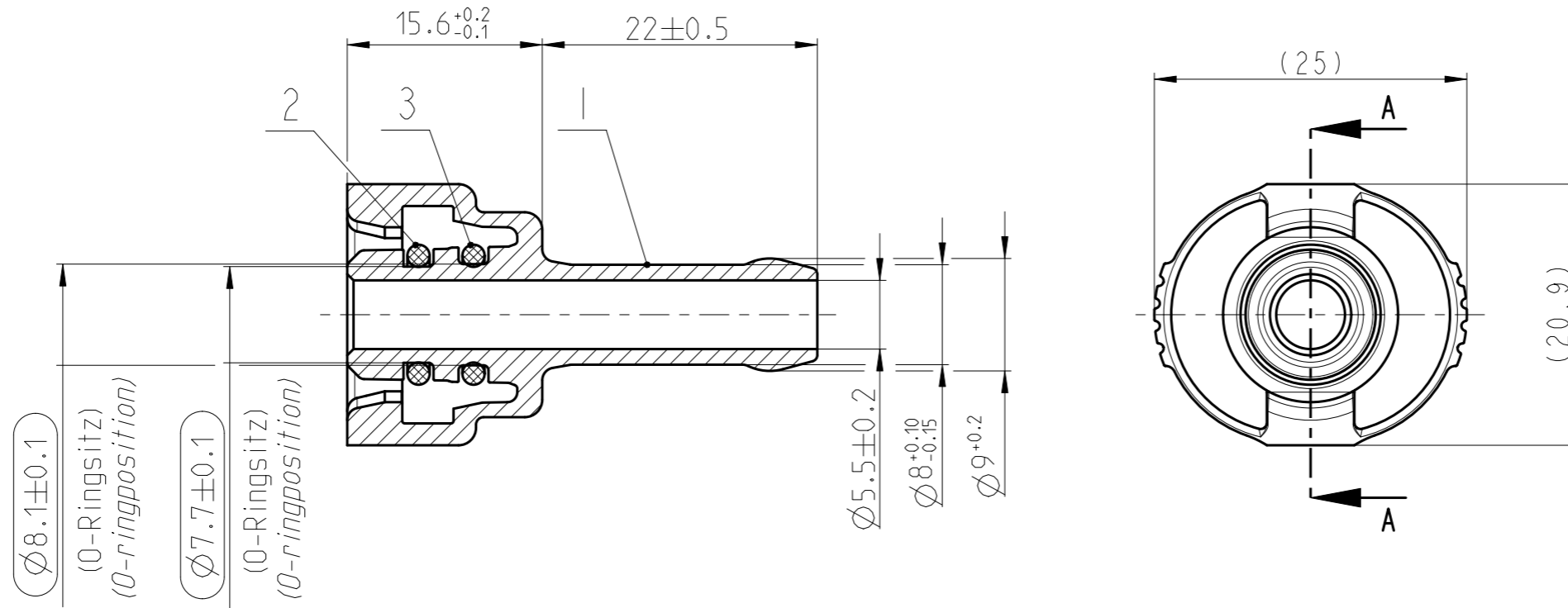
**SPECS &
INFORMATION**

QUOTATION DRAWING

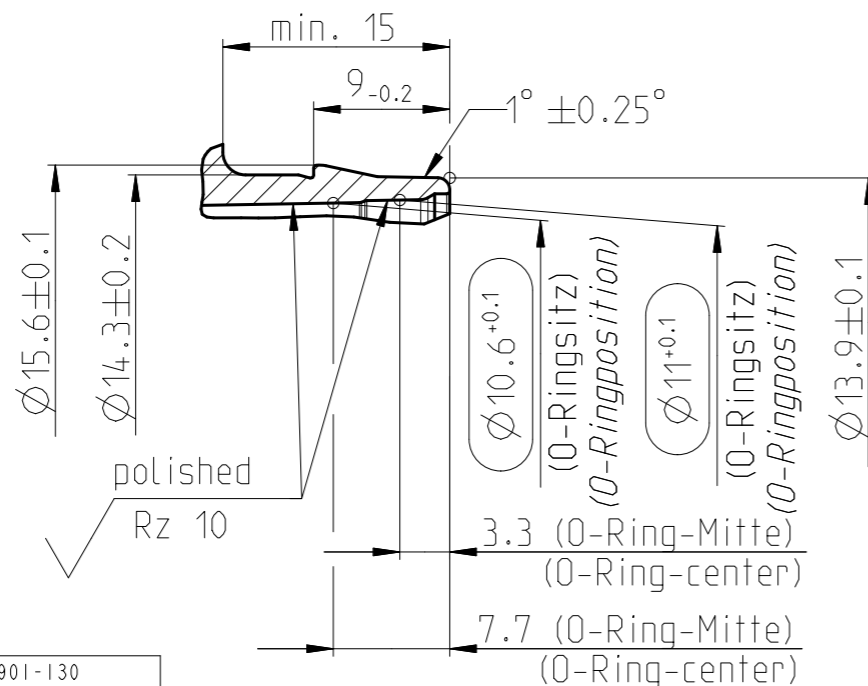
Teil-Nr ITEM-NO	Stueck QTY	Benennung PART - NAME	Werkstoff MATERIAL	Oberflaeche SURFACE
1	1	Housing NW7-0*	PA6-GF30	Black
2	1	O-RING 7.65 X 1.78	FPM	Black
3	1	O-RING 7.65 X 1.78	FVQM	Blue



MASSSTAB/SCALE 1:1



Stutzen/Spigot NW06, NW07, NW08
 MASSSTAB/SCALE 2:1
 1713 8012 006



NORMAQUICK - ASSEMBLY MARKING	
Customer part-No.:	-
Trademark:	-
Manufacturer code:	NORMA
NORMA date code:	XX YY
Material code molding part:	>PA6-GF30<

GENERAL TOLERANCE:	DIN 16901-130
FORM AND POS. TOL.:	DIN ISO 2768
DEVIATION FOR ANGLE:	±2°

INDEX PART	DWG	QTY	REVISION SUMMARY		CHANGE-NO	DATE	DRAWN	CHECKED
-	-	-	-	-	-	-	-	-
-	B	-	Drawing separation		-	2022-08-04	Reichtl	Reuter
-	A	-	Bemaßung und Bezeichnung standardisiert/ dimension and description standardized		-	2010-11-10	CeSys/RS	Strauss

1st ANGLE PROJECTION	ACCORDING TO:	PART NAME:	
	SCALE: 2:1	NORMAQUICK V2 NW7-0°	
	DATE: YYYY-MM-DD	with 2 O-rings	
	DRAWN 1996-12-03		
	CHECKED -		
PROJECT-NO.:	NORMA Germany GmbH	CUSTOMER:	CUSTOMER-NO.:
9990003371	Postfach 1149 63461 Maintal	-	
CAD-SYSTEM:	(C) COPYRIGHT NORMA GROUP	NORMA-NO.:	INDEX PART DWG
Creo 3.0 M140	DIN ISO 16016	0713 8000 007	B
DRAWING-NAME.:	07138000007_Q	TYPE	FORMAT
		Q	A3
		SHEET	1/1



info@iq-parts.nl
Harsweg 34A
2461 EZ Ter Aar
T +31 252 624 126
The Netherlands