

**iQ parts**  
IQ-PARTS-SHOP.COM

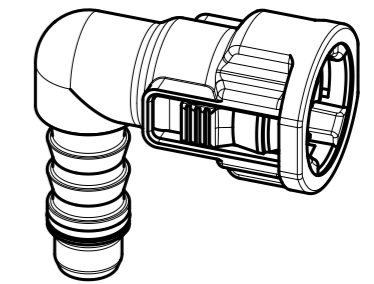
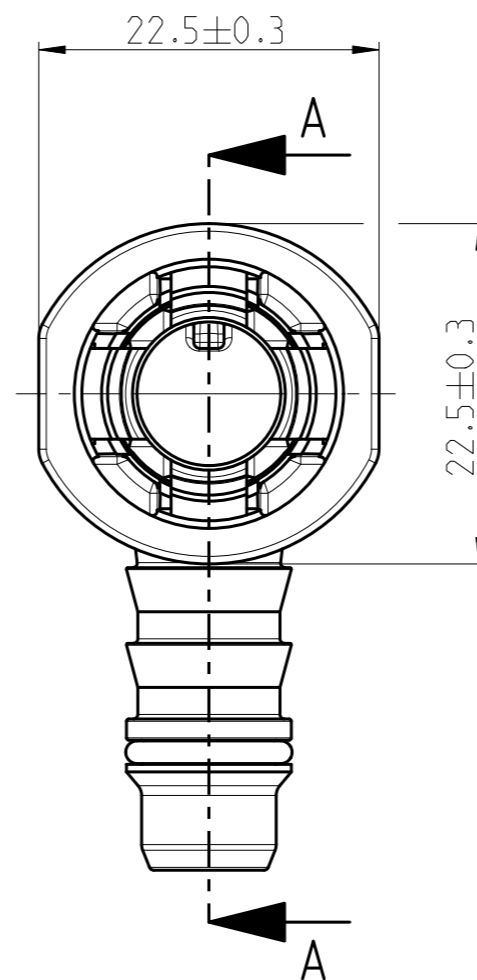
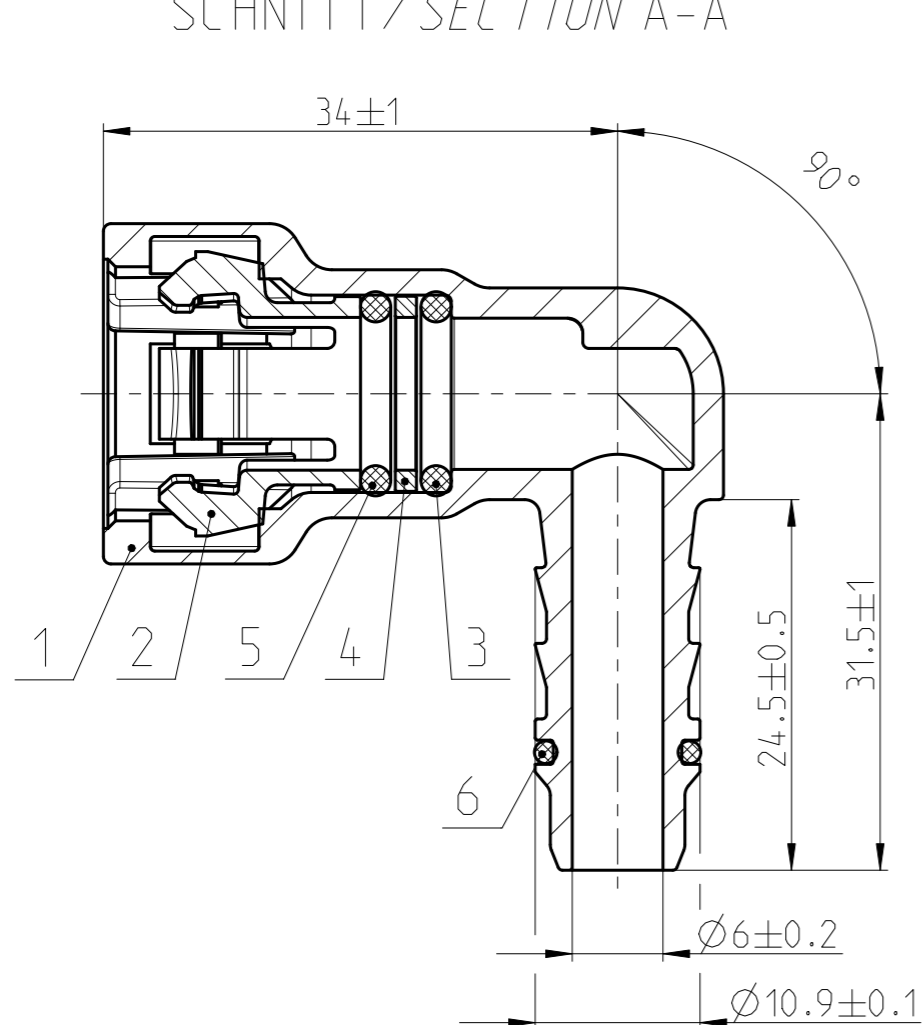


**SPECS &  
INFORMATION**

Angebotszeichnung  
QUOTATION DRAWING

Teil-Nr ITEM-NO	Stueck QTY	Benennung PART - NAME	Werkstoff MATERIAL	Oberflaeche SURFACE
1	1	Housing NW 10-8-90 °	PA12-GF50	black
2	1	Retaining spring NW 10	PA12-GF30	black
3	1	O-RING 9.5 X 2.0	FPM	black
4	1	Spacer NW 10	PA12-GF30	black
5	1	O-RING 9.5 X 2.0	FVMQ	yellow
6	1	O-RING 8.0 X 1.5	FPM	black

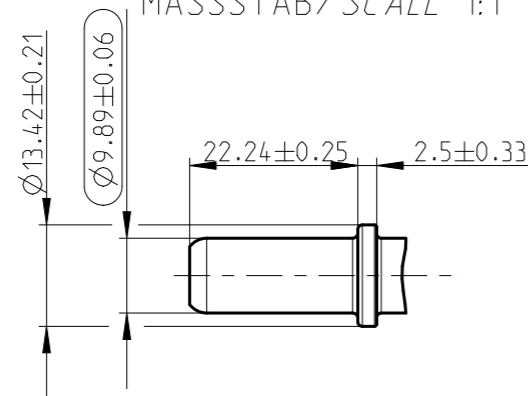
SCHNITT / SECTION A-A



MASSTAB / SCALE 1:1

NORMAQUICK - ASSEMBLY MARKING	
Customer part-No.:	-
Trademark:	-
Manufacturer code:	NORMA-RSS
NORMA date code:	XX YY
Material code molding part:	>PA12-GF50<

Anschlussstutzen/Connecting spigot  
gemaess/acc. to SAE J2044  
MASSTAB / SCALE 1:1



-	-	-	-	-	-	-	-	-	-	
-	-	-	-	-	-	-	-	-	-	
-	-	-	-	-	-	-	-	-	-	
-	A	-	Zeichnung getrennt/drawing seperated	-	2014-05-23	Mertens	Jacksteit	-	-	
INDEX Teil PART	Zeichg DWG	Anz. QTY.	Aenderung DESCRIPTION		Aend.Nr. CHANGE-NO.	Datum DATE	Bearb. DRAWN	Gepr. CHECKED		
			Allgemeintoleranz: GENERAL TOLERANCE:	Form- und Lagetoleranz: FORM AND POS. TOL.:	Abmass fuer Winkel: DEVIATION FOR ANGLE:	Gewicht / WEIGHT: errechnet CALCULATED	gewogen actual	Volumen: VOLUME:	Pruefkenzeichnung: TEST MARKING:	
			-	-	±2 °	-	-	- cm <sup>3</sup>		
			Projektions-Methode 1 1st ANGLE PROJECTION DIN ISO 128-30	Material: see parts list Material-No.: - Oberflaeche: see parts list SURF. QUAL.: -					PART NAME: <b>NORMAQUICK S NW 10-8-90 °</b> 4-arm retaining spring, black for SAE-spigot Ø9.89 mm	
			NORMA-Patentnummer: PATENT NUMBER:	Massstab: SCALE: 2:1	Datum/DATE Name/NAME	Bearb./DRAWN 2005-05-03 JH/SK	Gepr./CHECKED 2005-06-22 Bahlke			Benennung: <b>NORMAQUICK S NW 10-8-90 °</b> 4-Arm-Haltesfeder schwarz fuer SAE-Stutzen Ø9.89 mm
			Bandlaenge: LENGTH OF BAND:	Schutzvermerk nach ISO 16016 beachten CONSIDER AFTER PROTECTION NOTICE ISO 16016						
			ZNE:							Kunde/CUSTOMER: DIN A SHEET: SHEETS 3 1 1
			Ursprung/Anfrage: ENQUIRY-No.: 9900010528	NORMA Germany GmbH Postfach 1149 • 63461 Maintal © COPYRIGHT BY NORMA Group						Zeichnungs-Nr./DRAWING-NO.: 0715 8702 010 INDEX PART DWG TYPE 00 0A Q
			CAD-SYSTEM Pro/Engineer	DRAWING-NAME: 07158702010_Q			SUB.F.: -			SUB.FROM: - MODEL-TYP: ASSEM
				DRAWING-NAME: 07158702010_Q			MODEL-NAME: 07158702010			



info@iq-parts.nl  
Harsweg 34A  
2461 EZ Ter Aar  
T +31 252 624 126  
The Netherlands