

iQ parts
IQ-PARTS-SHOP.COM

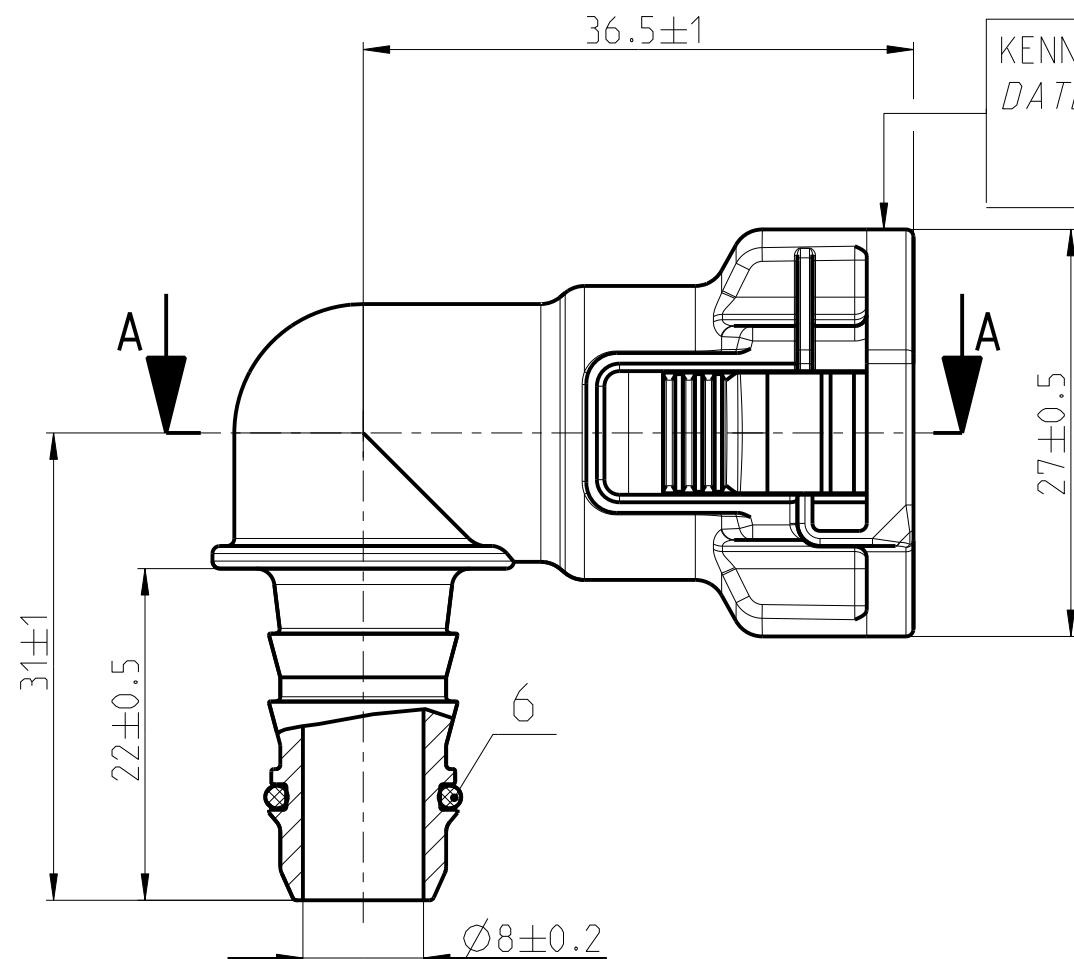


**SPECS &
INFORMATION**

Fertigungszeichnung
MANUFACTURING DRAWING

Angebotszeichnung
QUOTATION DRAWING

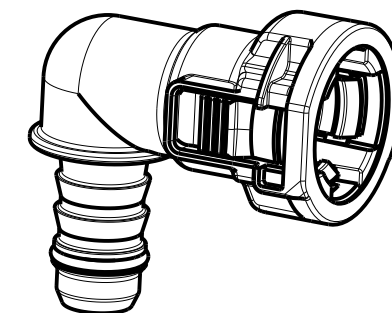
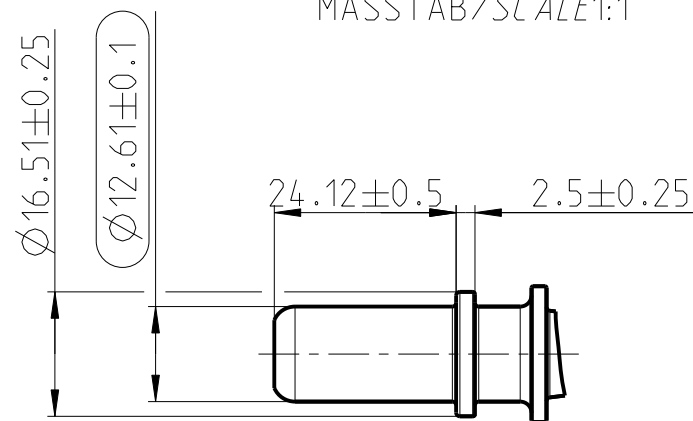
| Teil-Nr ITEM-NO | Stueck QTY | Benennung PART - NAME | VSN-Nr PP.-NO | Einzelteilnummer PART-NO | Index Teil/PART | Werkstoff MATERIAL | Rohstoffnummer MATERIAL-NO | Oberflaeche SURFACE |
|--------------------|---------------|--------------------------|------------------|-----------------------------|--------------------|-----------------------|-------------------------------|------------------------|
| 1 | 1 | Housing NW 1/2''-10-90° | | 1715 8503 012 | | PA12-GF50 | - | black |
| 2 | 1 | Retainer | | 1715 8501 012 | | PA12-GF30 | - | black |
| 3 | 1 | O-RING 12.42 X 1.78 | | 1067 8000 230 | | FVMQ | - | blue |
| 4 | 1 | Spacer NW 1/2'' | | 1715 8001 012 | | PA6-GF30 | - | black |
| 5 | 1 | O-RING 12.42 X 1.78 | | 1067 8000 229 | | FPM | - | black |
| 6 | 1 | O-RING 10 X 1.5 | | 1067 8000 636 | | FPM | - | black |



KENZEICHNUNG:
DATEMARK

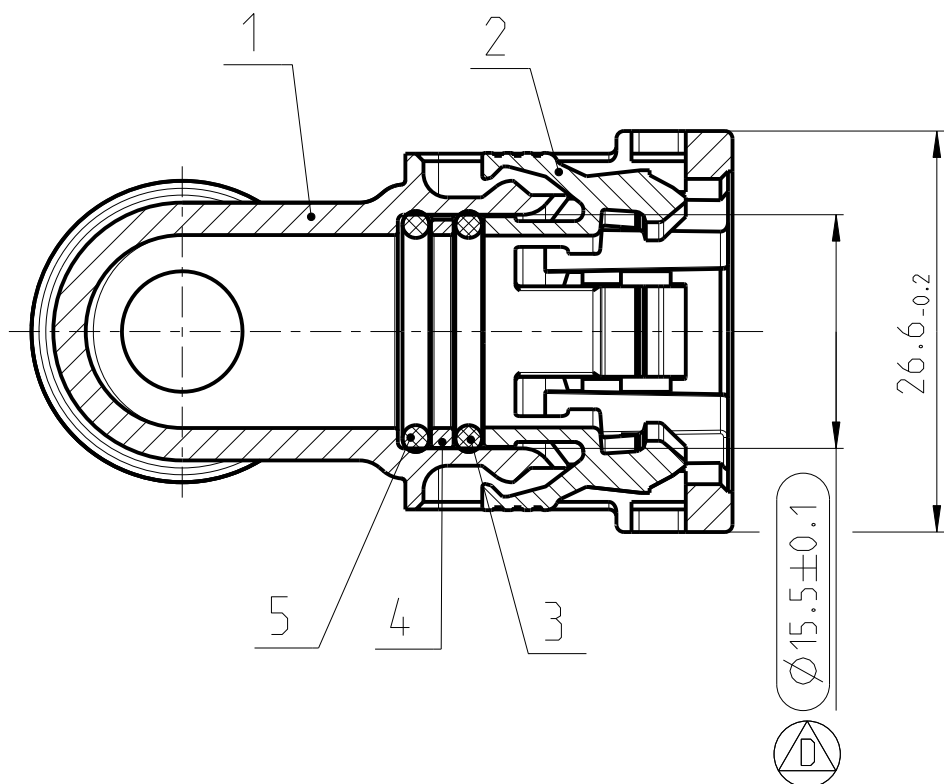
L C 10
TAG MONAT JAHR
DAY MONTH YEAR

Anschlussstutzen gem. SAE J2044
Connecting spigot acc. to SAE J2044
MASSTAB/SCALE 1:1



MASSTAB/SCALE 1:1

SCHNITT / SECTION A-A



| INDEX Teil/ PART | Zeichg DWG | Anz. QTY. | Aenderung DESCRIPTION | Aend.Nr. CHANGE-NO. | Datum DATE | Bearb. DRAWN | Gepr. CHECKED |
|--|---------------|---|--------------------------|--|---------------|--|------------------|
| - | - | - | - | - | - | - | - |
| - | - | - | - | - | - | - | - |
| - | - | - | - | - | - | - | - |
| - | - | - | - | - | - | - | - |
| Allgemeintoleranz: GENERAL TOLERANCE: | | Form- und Lagetoleranz: FORM AND POS. TOL.: | | Abmass fuer Winkel: DEVIATION FOR ANGLE: | | Gewicht / WEIGHT: errechnet / gewogen CALCULATED / actual | |
| DIN 16901-130 | | DIN ISO 2768 | | ±2° | | Volumen: VOLUME: - cm ³ | |
| Projektions-Methode 1 1st ANGLE PROJECTION DIN 6 | | Material: see parts list Material-No.: see parts list Oberflaeche: see parts list SURF. QUAL.: | | PART NAME: NORMAQUICK S NW 1/2''-10-90° for SAE-spigot Ø12.61 mm | | | |
| NORMA-Patentnummer: PATENT NUMBER: | | Masstab: SCALE: 2:1 | | Datum/DATE 2010-01-18 | | Name/NAME Mertens | |
| | | | | Gepr./CHECKED 2010-01-18 | | Jacksteit | |
| | | | | | | Benennung: NORMAQUICK S NW 1/2''-10-90° fuer SAE-Stutzen Ø12.61 mm | |
| ZNE: | | NORMA Germany GmbH Postfach 1149 • 63461 Maintal | | Zeichnungs-Nr./DRAWING-NO.: | | | |
| Ursprung/Anfrage: ENQUIRY-No.: | | Schutzvermerk nach ISO 16016 beachten CONSIDER AFTER PROTECTION NOTICE ISO 16016 | | 0715 8596 012 | | INDEX Teil/PART Zeichg/DWG | |
| 9900019058 | | © COPYRIGHT BY NORMA Group | | SUB.F.: - | | DIN A SHEET: 3 1 SH | |
| CAD-SYSTEM Pro/Engineer | | DRAWING-NAME: 07158596012 | | MODEL-NAME: 07158596012 | | SUB.FROM: - | |
| | | | | | | MODEL-TYP: ASSEM | |

Zeichnungs-Nr./DRAWING-NO.:
0715 8596 012

Teil/PART Zeichg/DWG
INDEX



info@iq-parts.nl
Harsweg 34A
2461 EZ Ter Aar
T +31 252 624 126
The Netherlands