

**iQ parts**  
IQ-PARTS-SHOP.COM

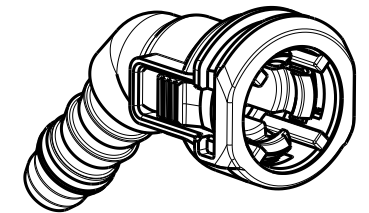
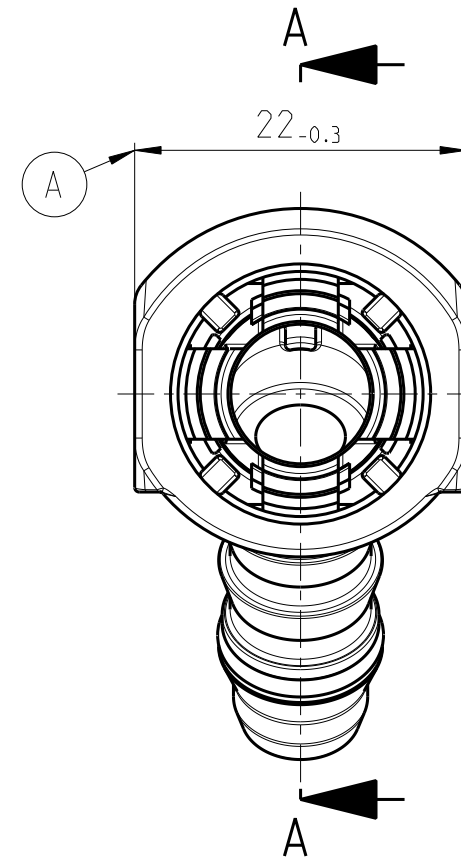
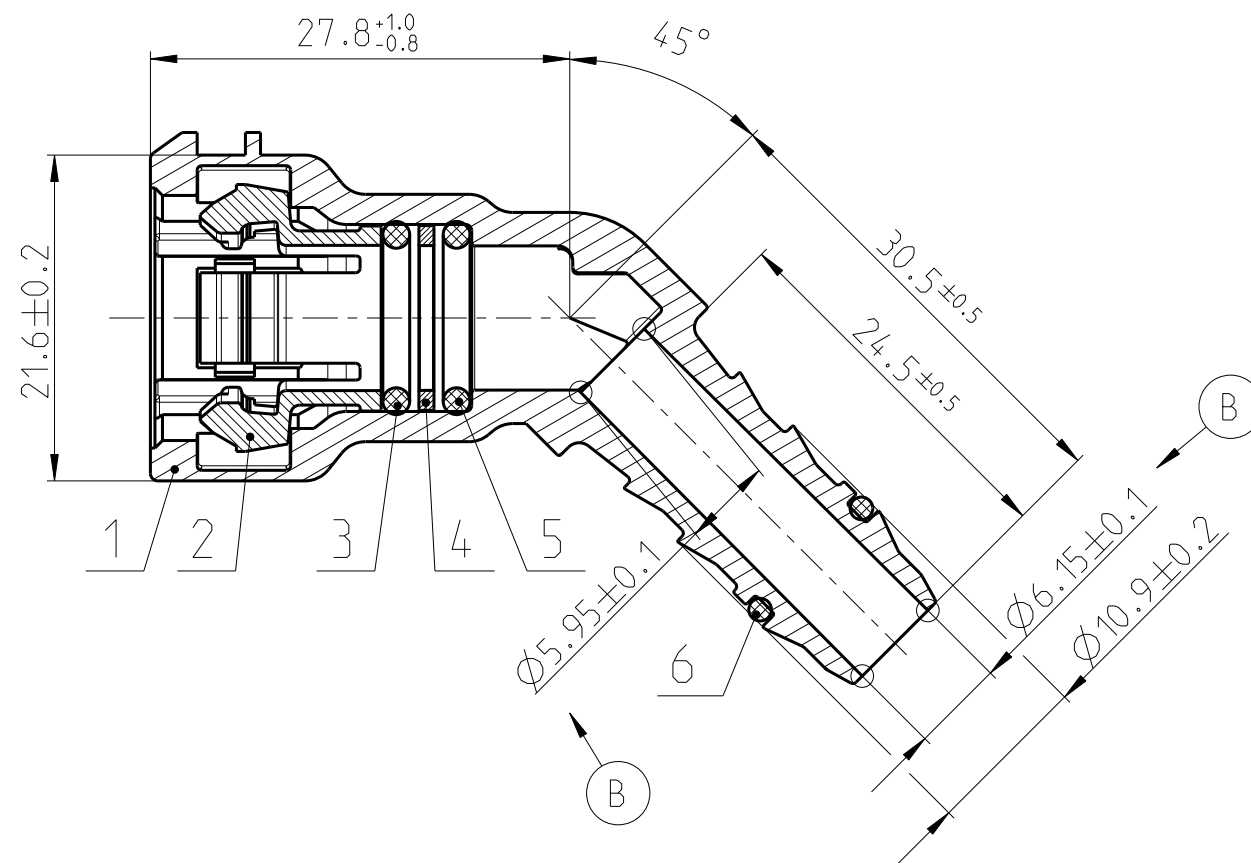


**SPECS &  
INFORMATION**

Angebotszeichnung  
QUOTATION DRAWING

Teil-Nr ITEM-NO	Stueck QTY	Benennung PART - NAME	Werkstoff MATERIAL	Oberflaeche SURFACE
1	1	Housing NW 3/8''-5/16''-45°	PA12-GF50	black
2	1	Retainer NW 3/8''	PA12-GF30	black
3	1	O-RING 9.25 X 1.78	FVMQ	blue
4	1	Spacer NW 3/8''	PA6-GF30	black
5	1	O-RING 9.25 X 1.78	FPM	black
6	1	O-RING 8.0 X 1.5	FPM	black

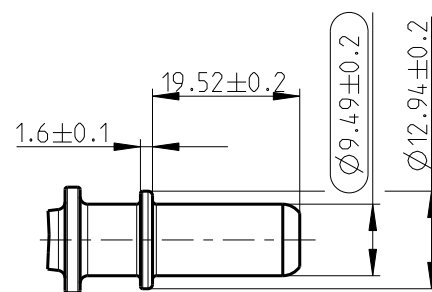
SCHNITT/SECTION A-A



MASSTAB/SCALE 1:1

NORMAQUICK - ASSEMBLY MARKING	
Customer part-No.:	-
Trademark:	-
Manufacturer code:	NORMA
NORMA date code:	XX YY
Material code molding part:	>PA12-GF50<

Anschlussstutzen/Connectin spigot  
gemaess/acc. to SAE J2044  
MASSTAB/SCALE 1:1



-	-	-	-	-	-	-	-	-	-
-	-	-	-	-	-	-	-	-	-
-	B	2	Punktmasse hinzu / point dimensions added	-	2012-09-27	TS/IC	Jacksteit		
-	A	2	Tasche am Gehaeuse ggf; -0.3 war -0.2	602443	26.06.04	SB/SK	Bahlke		
INDEX Teil PART	Zeichg DWG	Anz. QTY.	Aenderung DESCRIPTION		Aend.Nr. CHANGE-NO.	Datum DATE	Bearb. DRAWN	Gepr. CHECKED	
Allgemeintoleranz: GENERAL TOLERANCE:		Form- und Lagetoleranz: FORM AND POS. TOL.:		Abmass fuer Winkel: DEVIATION FOR ANGLE:	Gewicht / WEIGHT: errechnet CALCULATED		Volumen: VOLUME:		Pruefkennzeichnung: TEST MARKING:
-		-		±2°	-		- cm <sup>3</sup>		
Projektions-Methode 1 1st ANGLE PROJECTION DIN ISO 128-30		Material: see parts list			PART NAME:				
		Material-No.: -			NORMAQUICK S NW 3/8''-5/16''-45°				
		Oberflaeche: see parts list			4-arm-retainer - black				
		SURF. QUAL.:			for SAE-spigot Ø9.49 mm				
NORMA-Patentnummer: PATENT NUMBER:		Massstab: SCALE:		Datum/DATE	Name/NAME		Benennung:		
		2:1		2004-03-19	SB/SK		NORMAQUICK S NW 3/8''-5/16''-45°		
		-		2004-03-19	Bahlke		4-Arm-Haltefeder - schwarz		
				-	-		fuer SAE-Stutzen Ø9.49 mm		
Bandlaenge: LENGTH OF BAND:		Schutzvermerk nach ISO 16016 beachten CONSIDER AFTER PROTECTION NOTICE ISO 16016							
ZNE:						Kunde/CUSTOMER:		DIN A	SHEET: SHEETS
-								3	1   1
Ursprung/Anfrage: ENQUIRY-No.:		9900012276		NORMA Germany GmbH Postfach 1149 • 63461 Maintal		Zeichnungs-Nr./DRAWING-NO.:		INDEX PART DWG TYPE	
				© COPYRIGHT BY NORMA Group		0715 8536 010		00   0B   Q	
CAD-SYSTEM Pro/Engineer		DRAWING-NAME: 07158536010_Q		SUB.F.: ENG 03686		SUB.FROM: Bahlke			
				MODEL-NAME: 07158536010		MODEL-TYP: ASSEM			



info@iq-parts.nl  
Harsweg 34A  
2461 EZ Ter Aar  
T +31 252 624 126  
The Netherlands