

**iQ parts**  
IQ-PARTS-SHOP.COM



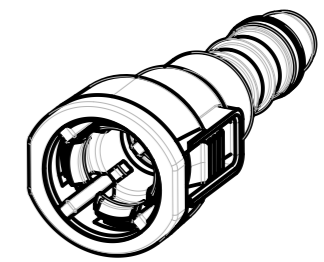
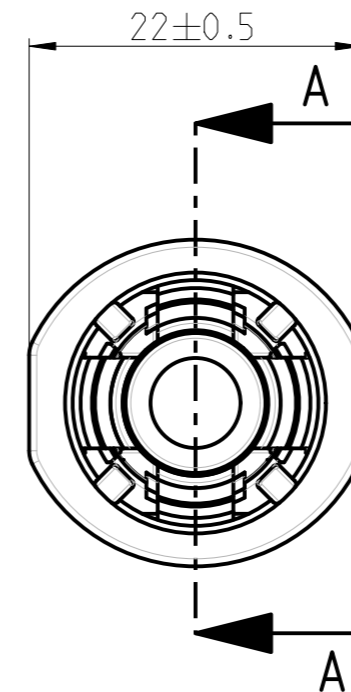
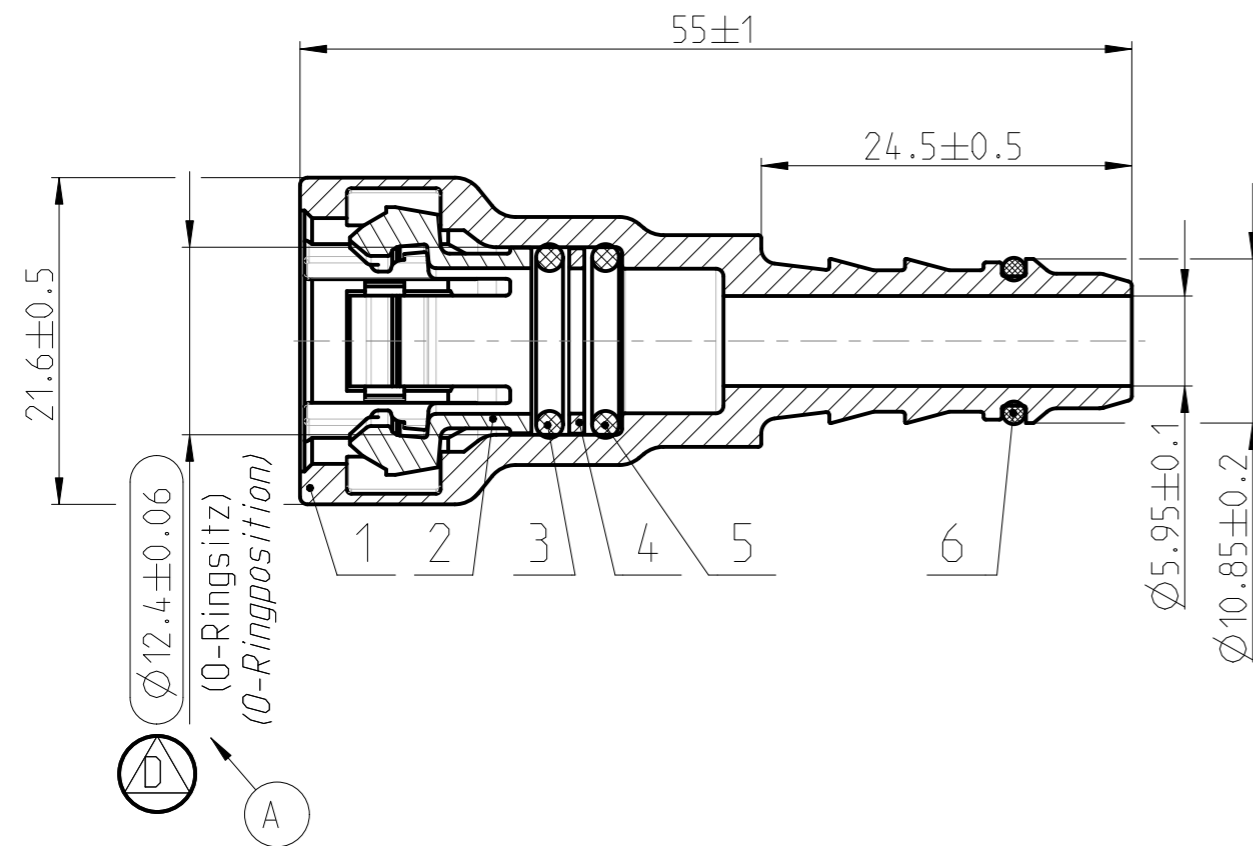
**SPECS &  
INFORMATION**



Angebotszeichnung  
QUOTATION DRAWING

Teil-Nr ITEM-NO	Stueck QTY	Benennung PART - NAME	Werkstoff MATERIAL	Oberflaeche SURFACE
1	1	Housing NW 3/8''-5/16''-0°	PA12-GF50	black
2	1	Retainer NW 3/8''	PA12-GF30	black
3	1	O-RING 9.25 X 1.78	FVMQ	blue
4	1	Spacer NW 3/8''	PA6-GF30	black
5	1	O-RING 9.25 X 1.78	FKM	black
6	1	O-RING 8.0 X 1.5	FKM	black

SCHNITT / SECTION A-A

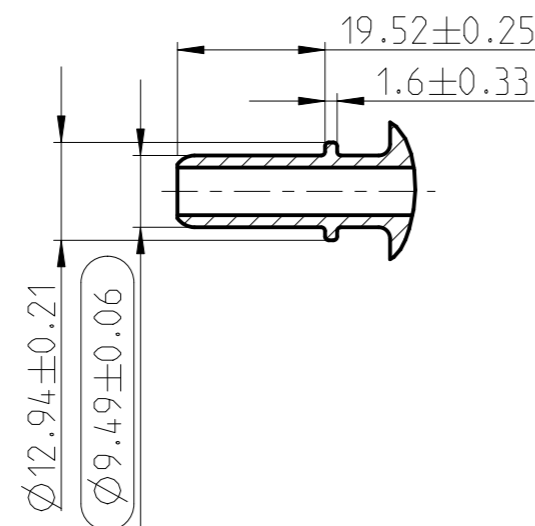


MASSTAB / SCALE 1:1



NORMAQUICK - ASSEMBLY MARKING	
Customer part-No.:	-
Trademark:	-
Manufacturer code:	NORMA-RSS
NORMA date code:	XX YY
Material code molding part:	>PA12-GF50<

Anschlussstutzen / Connecting spigot  
gemaess / acc. to SAE J2044  
MASSTAB / SCALE 1:1



-	C	1	1) Drawing seperated; 2) Marking table added;	-	2013-06-12	Chopade	Kaya	
-	B	-	O-Ring 1067 8000 153 war 1067 8000 280; Ansicht "Stutzen" hinzu; Benennung geaendert	602934	2005-01-21	ibb/SaKe	Bahlke	
-	-	-	Jahr 04 war 01	-	-	-	-	
-	A	-	Ø12.4±0.06 war Ø12.4±0.04; Haltefeder-Fluegel hinzu; 1715 8513 010 war 1715 8509 010	600869	2001-11-21	Imago-Gr	Bock	
INDEX Teil PART	Zeichg DWG	Anz. QTY.	Aenderung DESCRIPTION		Aend.Nr. CHANGE-NO.	Datum DATE	Bearb. DRAWN	Gepr. CHECKED
Allgemeintoleranz: GENERAL TOLERANCE:		Form- und Lagetoleranz: FORM AND POS. TOL.:		Abmass fuer Winkel: DEVIATION FOR ANGLE:	Gewicht / WEIGHT: errechnet CALCULATED		Volumen: VOLUME:	Pruefkenzeichnung: TEST MARKING:
-		-		-	-		- cm <sup>3</sup>	
Projektions-Methode 1 1st ANGLE PROJECTION DIN ISO 128-30		Material: see parts list Material-No.:		PART NAME: NORMAQUICK S NW 3/8''-5/16''-0° 4-Arm-Retainer-Black for SAE-Spigot Ø9.49 mm				
NORMA-Patentnummer: PATENT NUMBER:		Massstab: SCALE: 2:1		Datum/DATE	Name/NAME			
-		-		1999-11-16	Bauer			
-		-		-	Bock			
-		-		-	-			
Bandlaenge: LENGTH OF BAND:		Schutzvermerk nach ISO 16016 beachten CONSIDER AFTER PROTECTION NOTICE ISO 16016						
-		-						
ZNE:		-						
Ursprung/Anfrage: ENQUIRY-No.:		NORMA Germany GmbH Postfach 1149 • 63461 Maintal			Zeichnungs-Nr./DRAWING-NO.:		INDEX PART DWG TYPE	
9990006245		© COPYRIGHT BY NORMA Group			0715 8509 010		00   0C   Q	
CAD-SYSTEM Pro/Engineer		DRAWING-NAME: 07158509010_Q			SUB.F.: ENG 00615		SUB.FROM: -	
-		-			MODEL-NAME: 07158509010		MODEL-TYP: ASSEM	



info@iq-parts.nl  
Harsweg 34A  
2461 EZ Ter Aar  
T +31 252 624 126  
The Netherlands