

iQ parts
IQ-PARTS-SHOP.COM

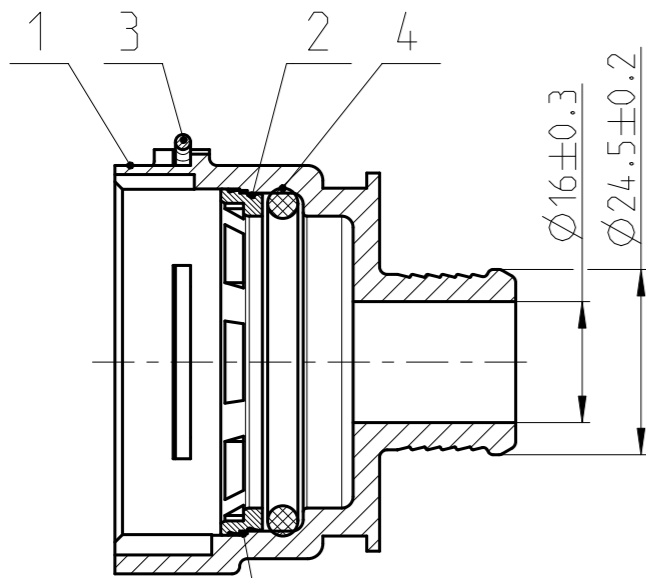


**SPECS &
INFORMATION**

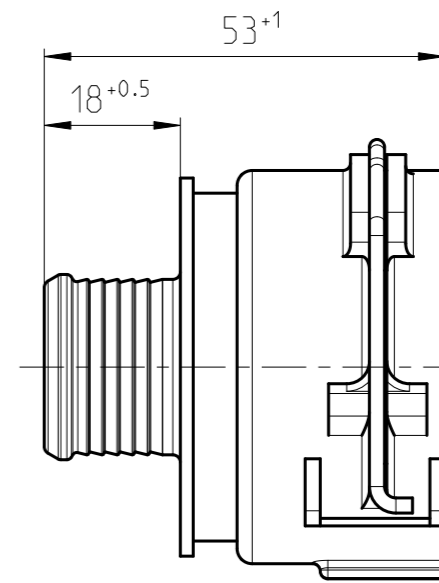
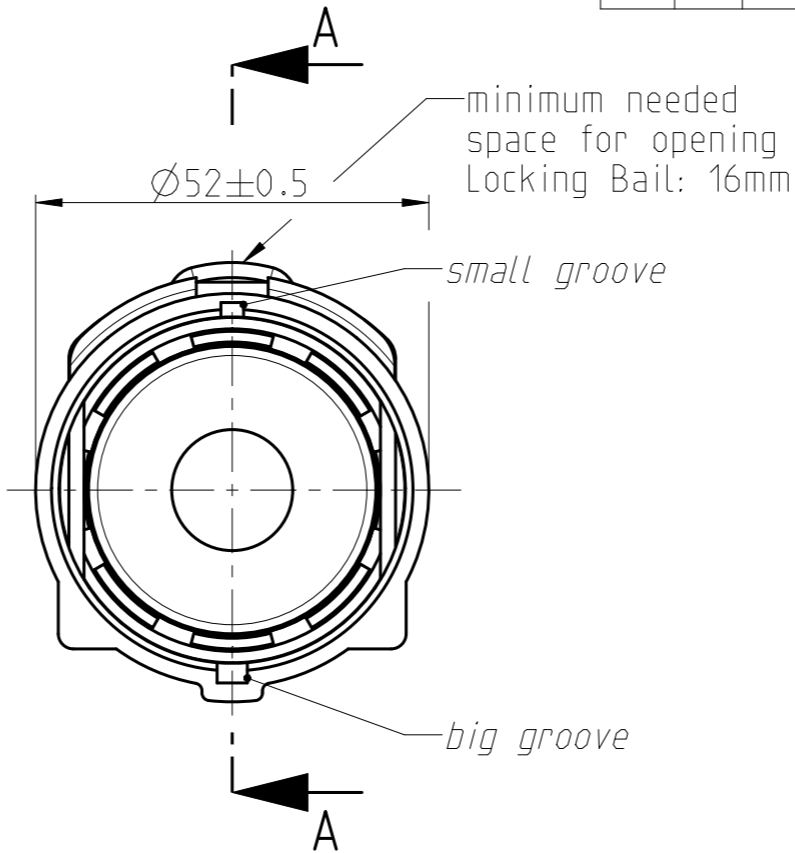
QUOTATION DRAWING

Teil-Nr ITEM-NO	Stueck QTY	Benennung PART - NAME	Werkstoff MATERIAL	Oberflaeche SURFACE
1	1	Housing NW 32-16-0*	PA66-GF30	Black
2	1	WELD RING NW 32	PA66-GF30	BLACK
3	1	LOCKING BAIL NW 32	4310-301-00-1 - NS - 2.00 (ISO 6931-1)	Black
4	1	O-RING 38.0 X 4.0	EPDM	Black

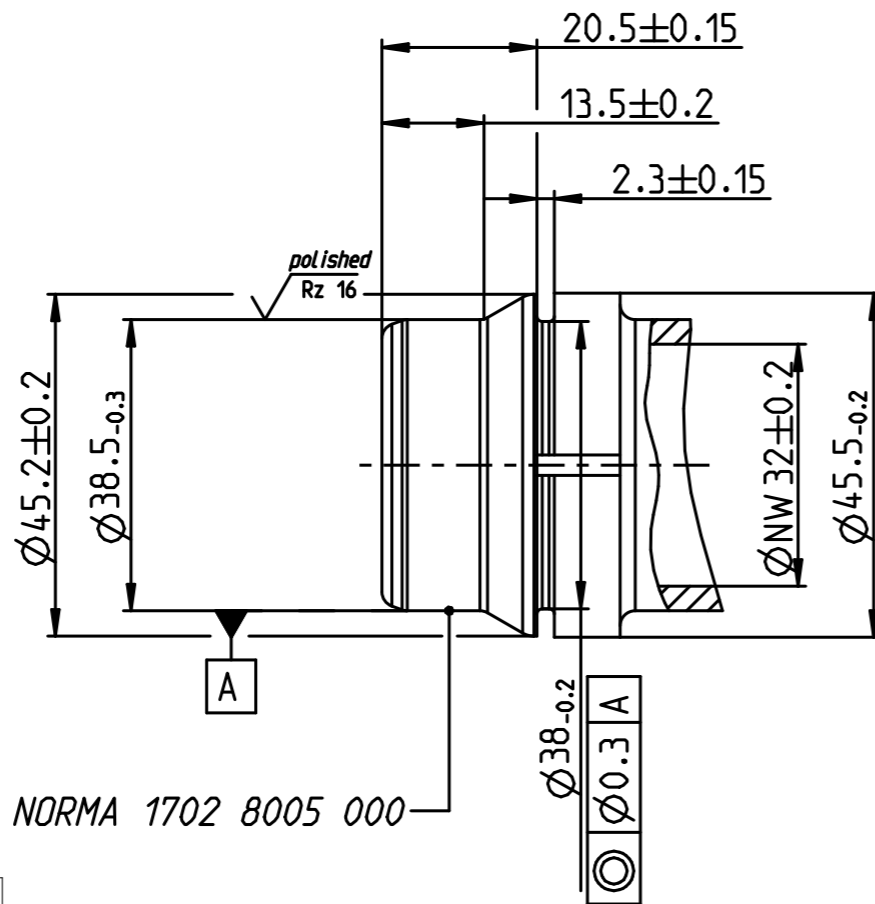
SECTION A-A



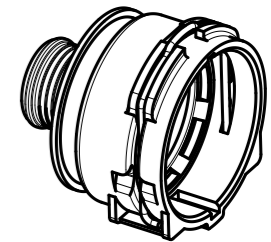
Item 1 and 2 welded together



View spigot
Scale 1:1



NORMAQUICK - ASSEMBLY MARKING	
Customer part-No.:	-
Trademark:	-
Manufacturer code:	NORMA-RSS
NORMA date code:	XX YY
Material code molding part:	>PA66-GF30<



SCALE 1:2

-	-	-	-	-	-	-
-	-	-	-	-	-	-
-	-	-	-	-	-	-
-	-	-	-	-	-	-
-	A	-	2024-03-20	Reichl, Thomas	2024-03-21	Ries, Annette
-	-	-	-	-	-	-
-	-	-	2011-05-30	Mertens	2011-05-30	Ries
Index	Qty	CN Number	Modified on	Modified by	Review Date	Reviewer
Change	DWG					

1st ANGLE PROJECTION	ACCORDING TO:	PART NAME:				
	SCALE: 1:1 MM	LIFECYCLE STATE: Production Released	NORMAQUICK PS3 NW 32-16-0°			
PROJECT-NO.: 9900020458-001			CUSTOMER:	CUSTOMER-NO:		
CAD-SYSTEM: Creo 8.0	(C) COPYRIGHT NORMA GROUP DIN ISO 16016	NORMA-NO.: 0702 8718 032	INDEX CHANGE	DWG	TYPE	FORMAT
DRAWING-NAME.: 07028718032_Q			A	Q	A3	1/1

Not specified dimension acc. NORMA 1702 8005 000

GENERAL TOLERANCE:	DIN 16901-130
FORM AND POS. TOL.:	DIN ISO 2768
DEVIATION FOR ANGLE:	±2°



info@iq-parts.nl
Harsweg 34A
2461 EZ Ter Aar
T +31 252 624 126
The Netherlands