

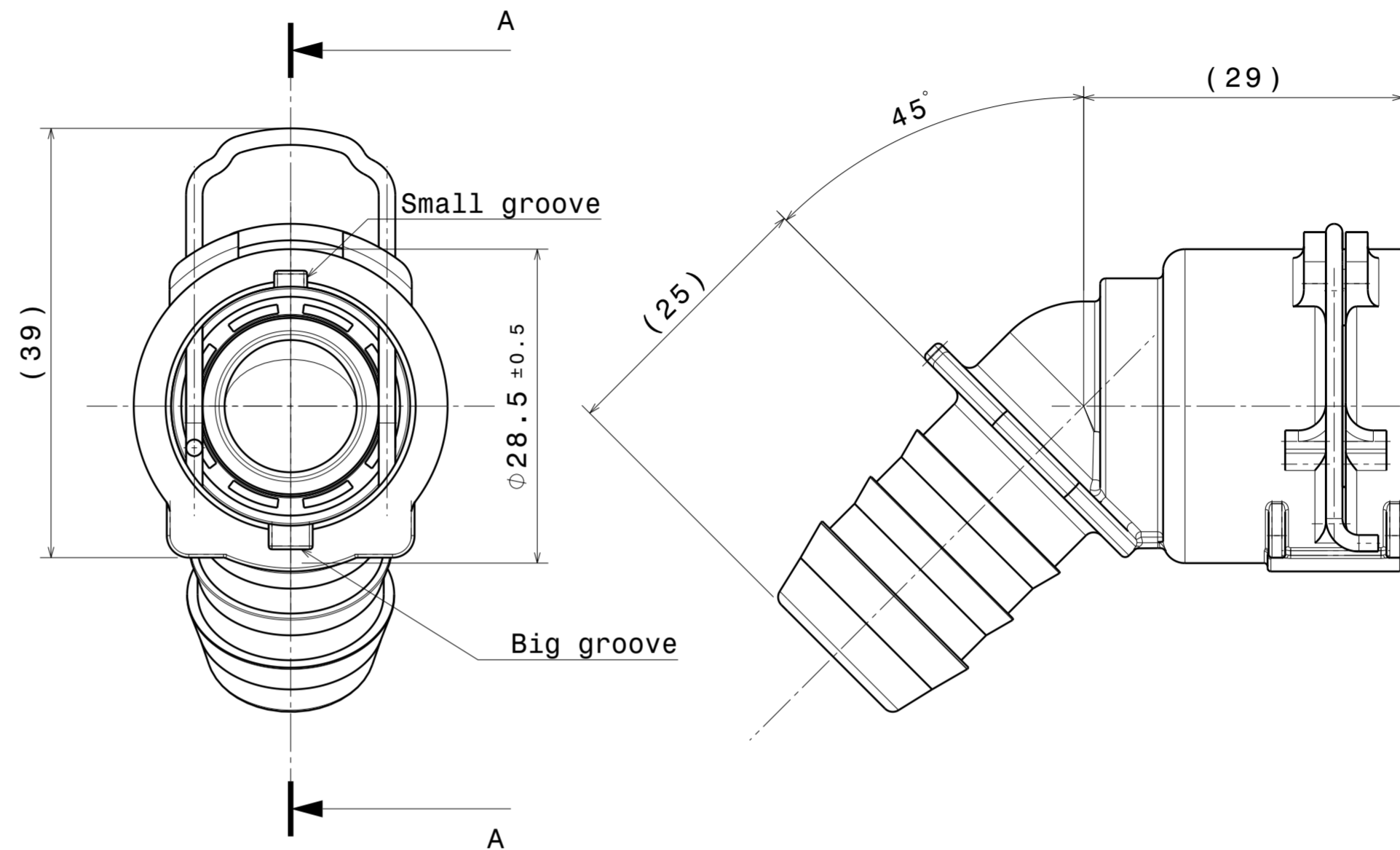
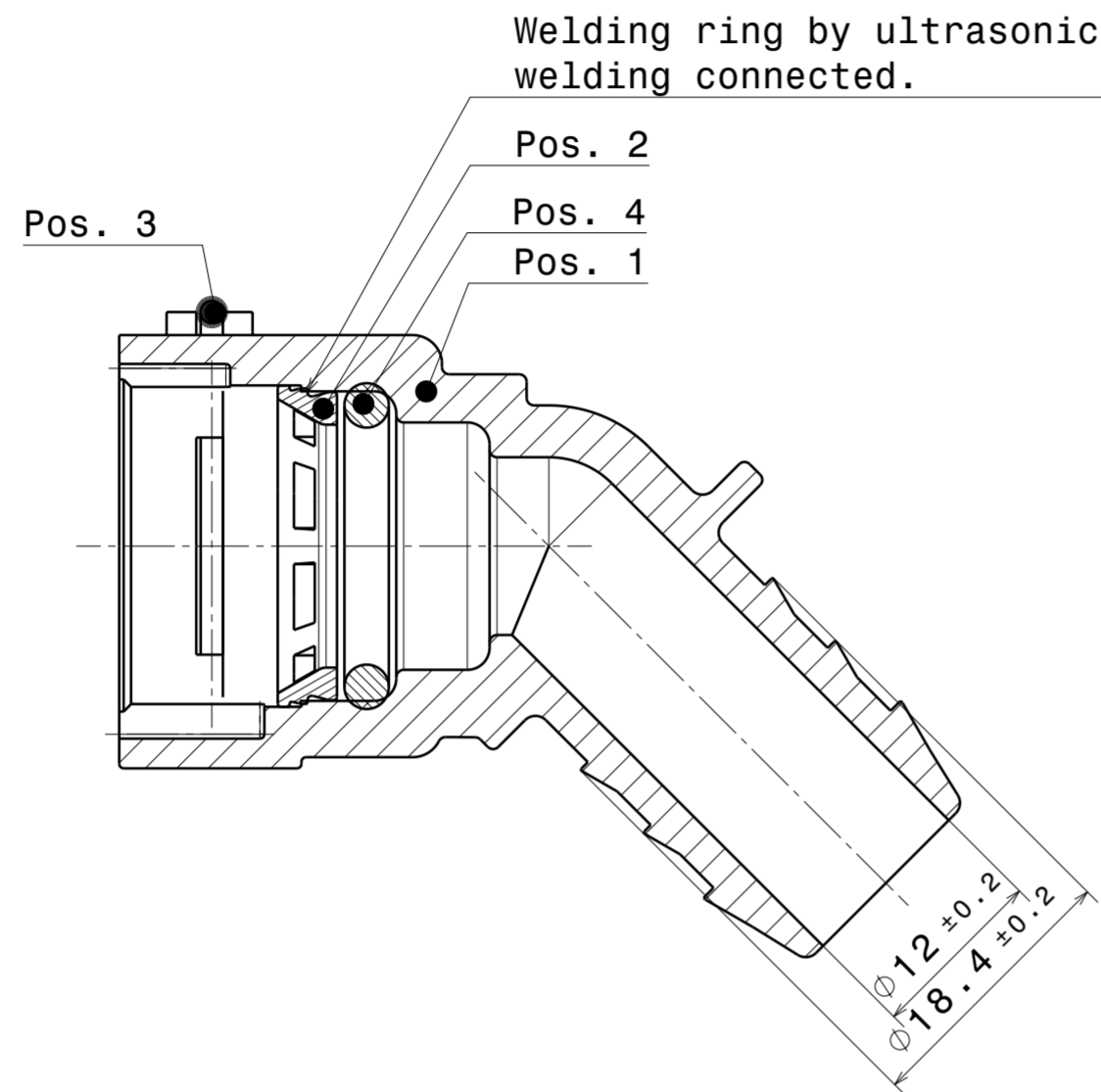
iQ parts
IQ-PARTS-SHOP.COM



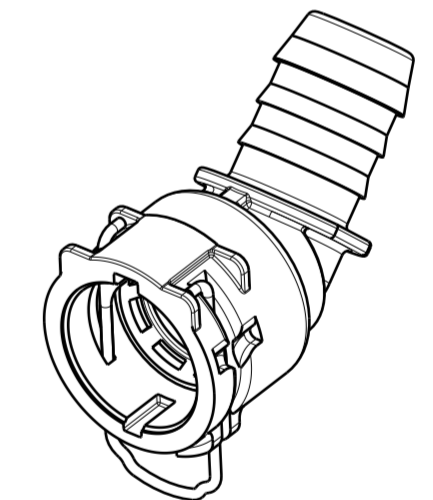
**SPECS &
INFORMATION**

Item-No	Type	Qty	Part name	Material	Surface
1	PART	1	Housing PS3 NW12-15-45°	PA66-GF30	black
2	PART	1	Weld Ring NW12	PA66 GF30	black
3	PART	1	Locking ball NW12	EN-10270-3-1.4310-NS-1.5	black
4	PART	1	O-Ring 16.0x3.0	EPDM 60	black

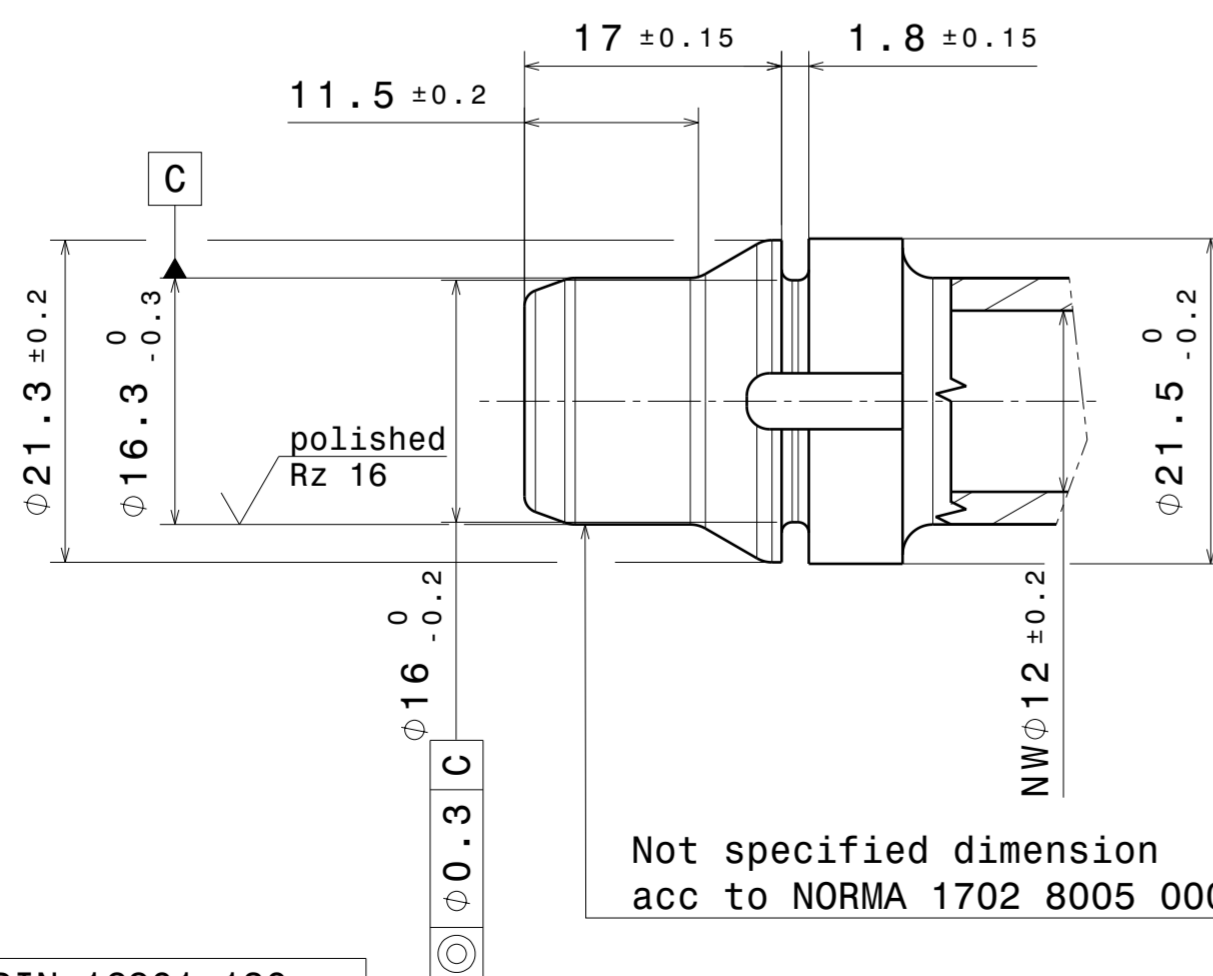
Section view A-A



Isometric view
Scale: 1:1



View Spigot
Scale 2:1



Performance features for NQ PS3 - VDA -for information only-	
Medium	coolant water
Operation temperature	-40°C thru 135°C. short-term up to 150°C (max.30min over lifetime)
Operation pressure	0 to 2 bar, partial pulsating (sinusoidal)

NORMAQUICK - ASSEMBLY MARKING	
Trademark.	-
Manufacturer code:	NORMA
Date clock:	XX YY
Material code:	>PA66-GF30<

INDEX	PART	DWG	QTY	REVISION SUMMARY	CHANGE-NO	DATE	DRAWN	CHECKED
-	B	1	-	Pos. 3 colour updated. Was blank	-	2021-07-27	Kulig	Dygon
-	A	-	-	Assembly marking updated	-	2020-11-19	Kulig	Dygon

1st ANGLE PROJECTION		ACCORDING TO:		PART NAME:	
SCALE:	DATE: YYYY-MM-DD	NAME:	NormaQuick PS3 NW12-15-45°		
2:1	DRAWN 2020-08-31	Kulig			
MM	CHECKED 2020-08-31	Stach			

PROJECT-NO.:	NORMA Germany GmbH	CUSTOMER:	CUSTOMER-NO:
9180702007-34	Postfach 63461 Maintal	-	-

CAD-SYSTEM:	(C) COPYRIGHT NORMA GROUP	NORMA-NO.:	INDEX	TYPE	FORMAT	SHEET
CATIA V5R18	DIN ISO 16016	0702 8117 012	PART	DWG	Q A2	1/1

General tolerance:	DIN 16901-130
Form and Pos. Tol.	DIN ISO 2768
Deviation for angle:	±2°



info@iq-parts.nl
Harsweg 34A
2461 EZ Ter Aar
T +31 252 624 126
The Netherlands