

iQ parts
IQ-PARTS-SHOP.COM

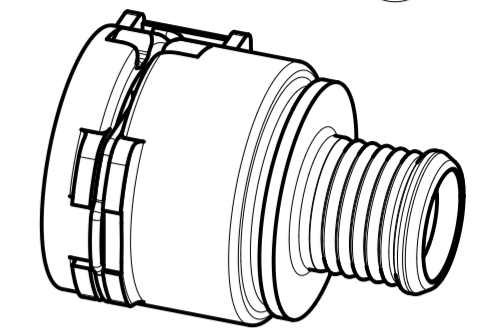
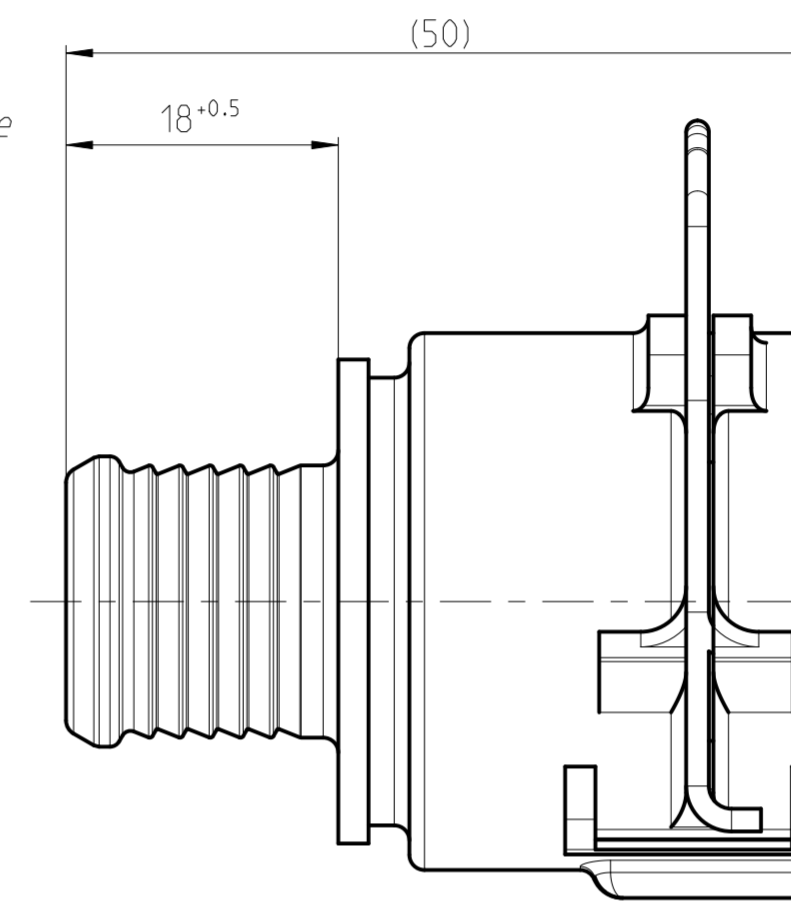
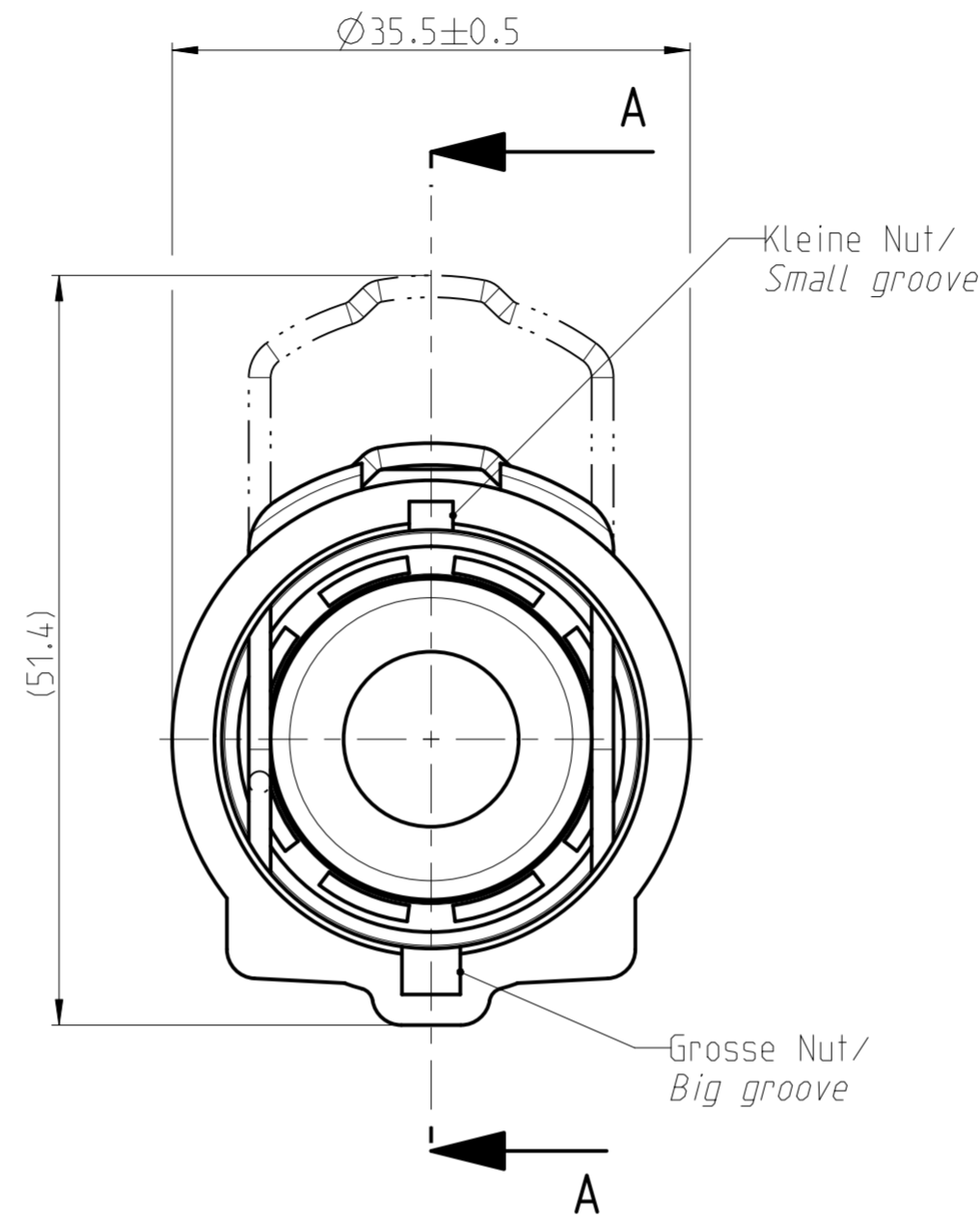
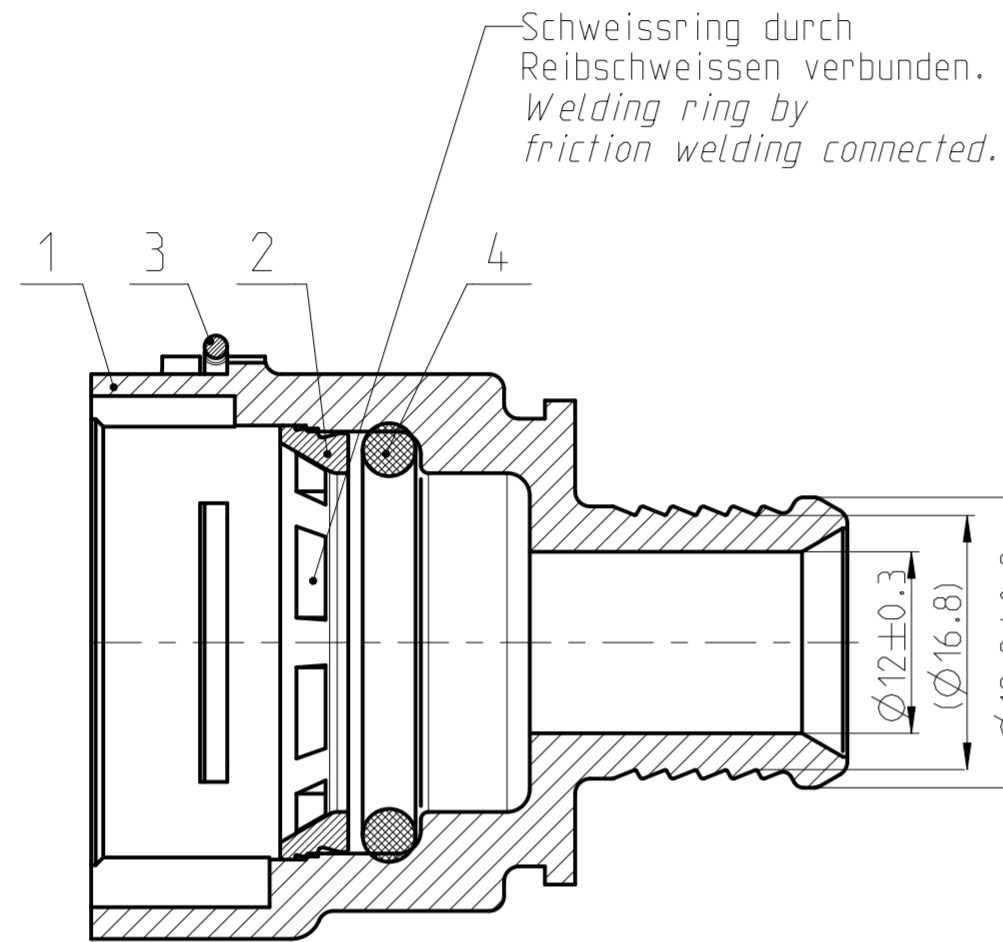


**SPECS &
INFORMATION**

Angebotszeichnung
QUOTATION DRAWING

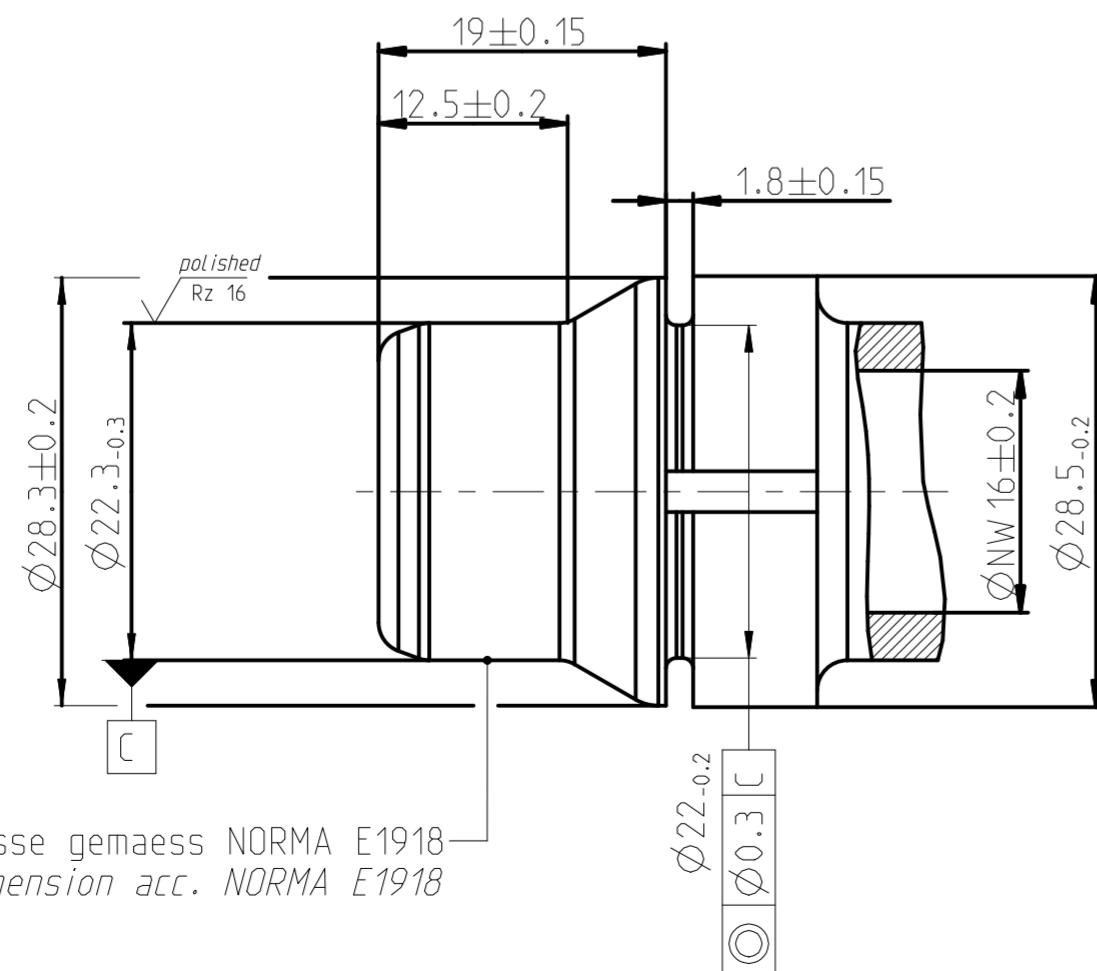
Teil-Nr ITEM-NO	Stueck QTY	Benennung PART - NAME	Werkstoff MATERIAL	Oberflaeche SURFACE
1	1	Housing PS3 NW 16-12-0°	PA66-GF30	black
2	1	Weld ring NW 16	PA66-GF30	black
3	1	Locking bail NW 16	EN10270-3-1.4310-NS-1.5	blank
4	1	O-RING 22.0 X 3.5	EPDM-60	black

SCHNITT/SECTION A-A



MASSTAB/ SCALE 1:1

Ansicht Stutzen/View spigot
MASSTAB/ SCALE 2:1



Performance features for NQ PS3 - VDA	
Medium	coolant water
Operation temperature	-40°C thru 135°C, short-term up to 150°C (max. 30 min. over Lifetime)
Operation pressure	0 to 2 bar, partial pulsating (sinusoidal)

NORMAQUICK - ASSEMBLY MARKING	
Customer part-No.:	-
Trademark:	-
Manufacturer code:	NORMA
NORMA date code:	XX YY
Material code molding part:	>PA66-GF30<

INDEX Teil/ PART	Anz. QTY.	Aenderung DESCRIPTION	Aend.Nr. CHANGE-NO.	Datum DATE	Bearb. DRAWN	Gepr. CHECKED
-	-	-	-	-	-	-
-	-	-	-	-	-	-
-	-	-	-	-	-	-
-	A	2 Drawing seperated; 1) Marking table added; 2) Pos.3 & Pos.4 material notification was DIN 2076-1.4310-1.5 & EPDM	-	2014-02-06	Biradar	Ries

Allgemeintoleranz: GENERAL TOLERANCE:	Form- und Lagetoleranz: FORM AND POS. TOL.:	Abmass fuer Winkel: DEVIATION FOR ANGLE:	Gewicht / WEIGHT: errechnet / calculated	Volumen: VOLUME:	Pruefkennzeichnung: TEST MARKING:
DIN 16901-130	DIN ISO 2768	±2°	-	cm ³	
Projektions-Methode 1 1st ANGLE PROJECTION DIN ISO 128-30	Material: see parts list Material-No.: - Oberflaeche: see parts list SURF. QUAL.:	PART NAME: NORMAQUICK PS3 NW 16-12-0° Locking Bail blank			
NORMA-Patentnummer: PATENT NUMBER:	Massstab: SCALE: 2:1	Datum/DATE 2008-10-10	Name/NAME TS/IC	Benennung: NORMAQUICK PS3 NW 16-12-0° Verriegelungsbugel blank	
Bandlaenge: LENGTH OF BAND:	Schutzvermerk nach ISO 16016 beachten CONSIDER AFTER PROTECTION NOTICE ISO 16016				
ZNE:	Kunde/CUSTOMER:				
Ursprung/Anfrage: ENQUIRY-No.:	NORMA Germany GmbH Postfach 1149 • 63461 Maintal © COPYRIGHT BY NORMA Group		Zeichnungs-Nr./DRAWING-NO.:		INDEX PART DWG TYPE
9900017730	EAD-SYSTEM Pro/Engineer		0702 8105 016		00 0A Q
	DRAWING-NAME: 07028105016_Q		SUB.F.: -		SUB.FROM: -
	MODEL-NAME: 07028105016		MODEL-TYP: ASSEM		



info@iq-parts.nl
Harsweg 34A
2461 EZ Ter Aar
T +31 252 624 126
The Netherlands