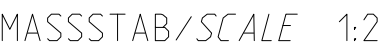


**iQparts**  
IQ-PARTS-SHOP.COM

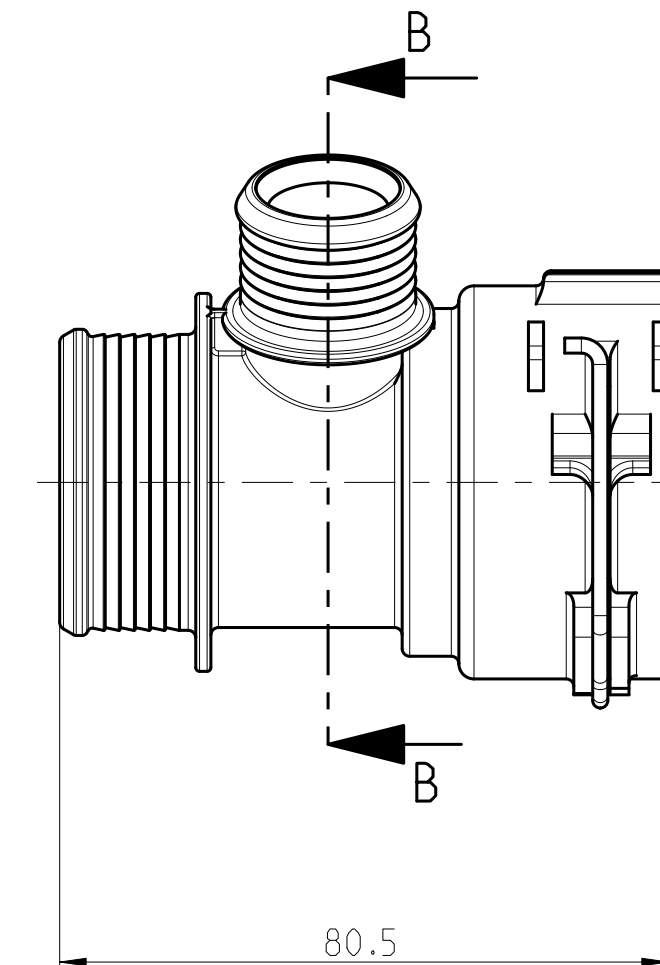


**SPECS &  
INFORMATION**



B3



## SCHNITT/SECTION A-A



Nicht angegebene Masse gemäss NORMA E1918  
*Not specified dimension acc. NORMA E1918*

-	-	-	-	-	-	-	-	-	
-	-	-	-	-	-	-	-	-	
1	B	3	Drawing split into M and Q drawing: 1) Marking table added; 2) Notes added; 3) Locking ball material was DIN 2076-1.4310-2.0;			-	2015-10-08	Mandalapure Stach	
1	A	1	Gehäuse ueberarbeitet, Teileindex hinzu / Housing revised, part index added			-	2010-04-19	TS/c Ries	
INDEX PART DWG		QTY	REVISION SUMMARY			CHANGE-NO	DATE	DRAWN	CHECKED
1st ANGLE PROJECTION		ACCORDING TO:			PART NAME:				
		SCALE:	DATE: YYYY-MM-DD	NAME	NORMAQUICK PS3 NW 32-16-25 °				
		1:1	DRAWN 1999-09-22	Bauer					
		MM	CHECKED -						
PROJECT-NO.: 9900016735		NORMA Germany GmbH Postfach 1149 63461 Maintal 			CUSTOMER:	CUSTOMER-NO:			
					-	-			
CAD-SYSTEM: Creo 2.0 M110		(C) COPYRIGHT NORMA GROUP DIN ISO 16016			NORMA-NO.:	PART INDEX DWG TYPE FORMAT SHEET			
DRAW ING-NOME.:		07028017032-Q			0702 8017 032	1	B	Q	A2 1/1





**iq**  
**parts**  
IQ-PARTS-SHOP.COM

info@iq-parts.nl  
Harsweg 34A  
2461 EZ Ter Aar  
T +31 252 624 126  
The Netherlands