

iQ parts
IQ-PARTS-SHOP.COM

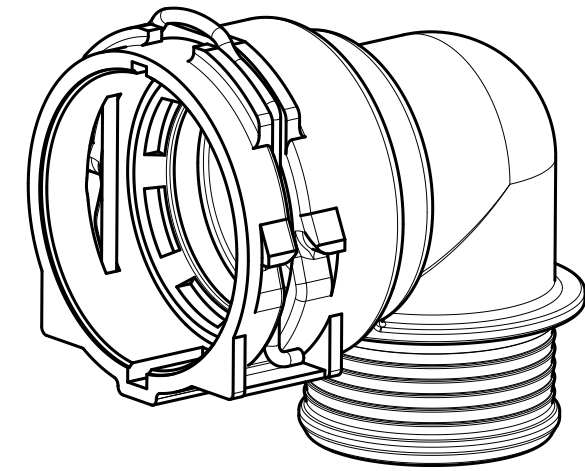
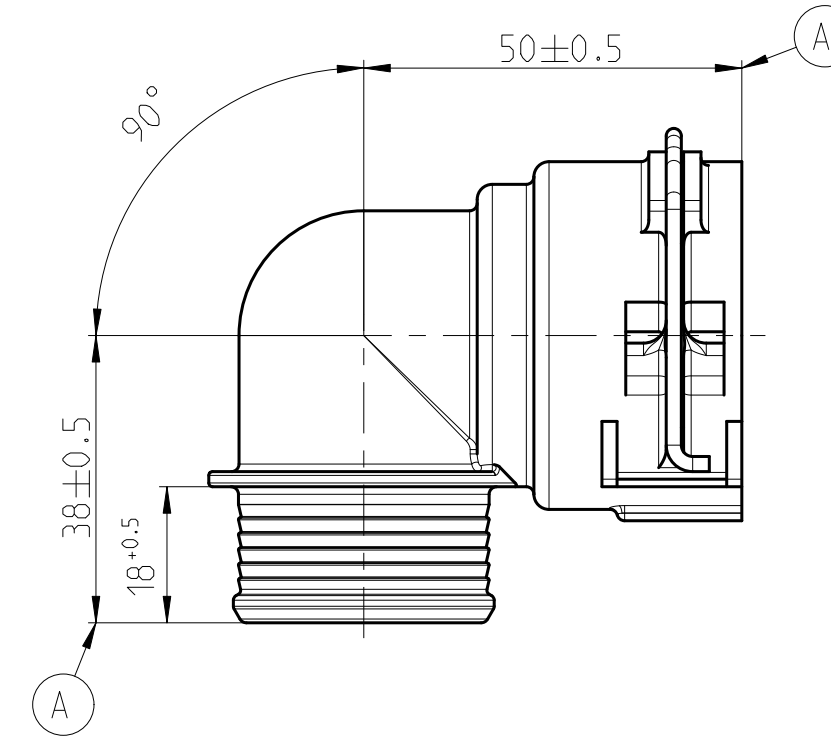
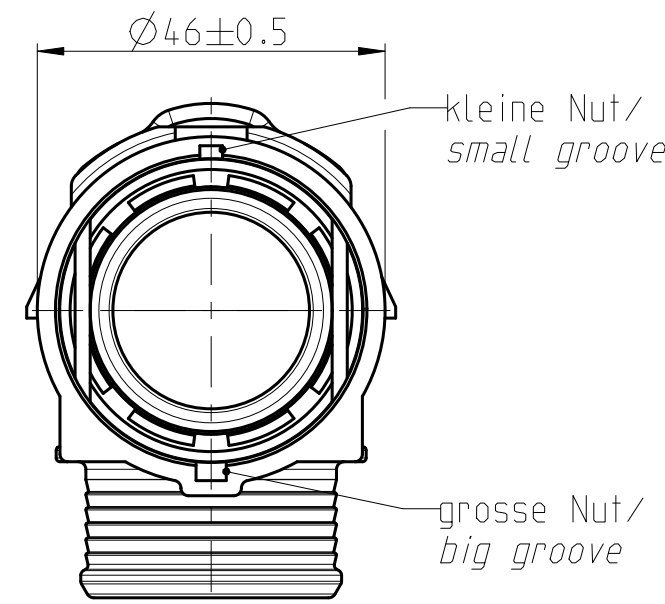
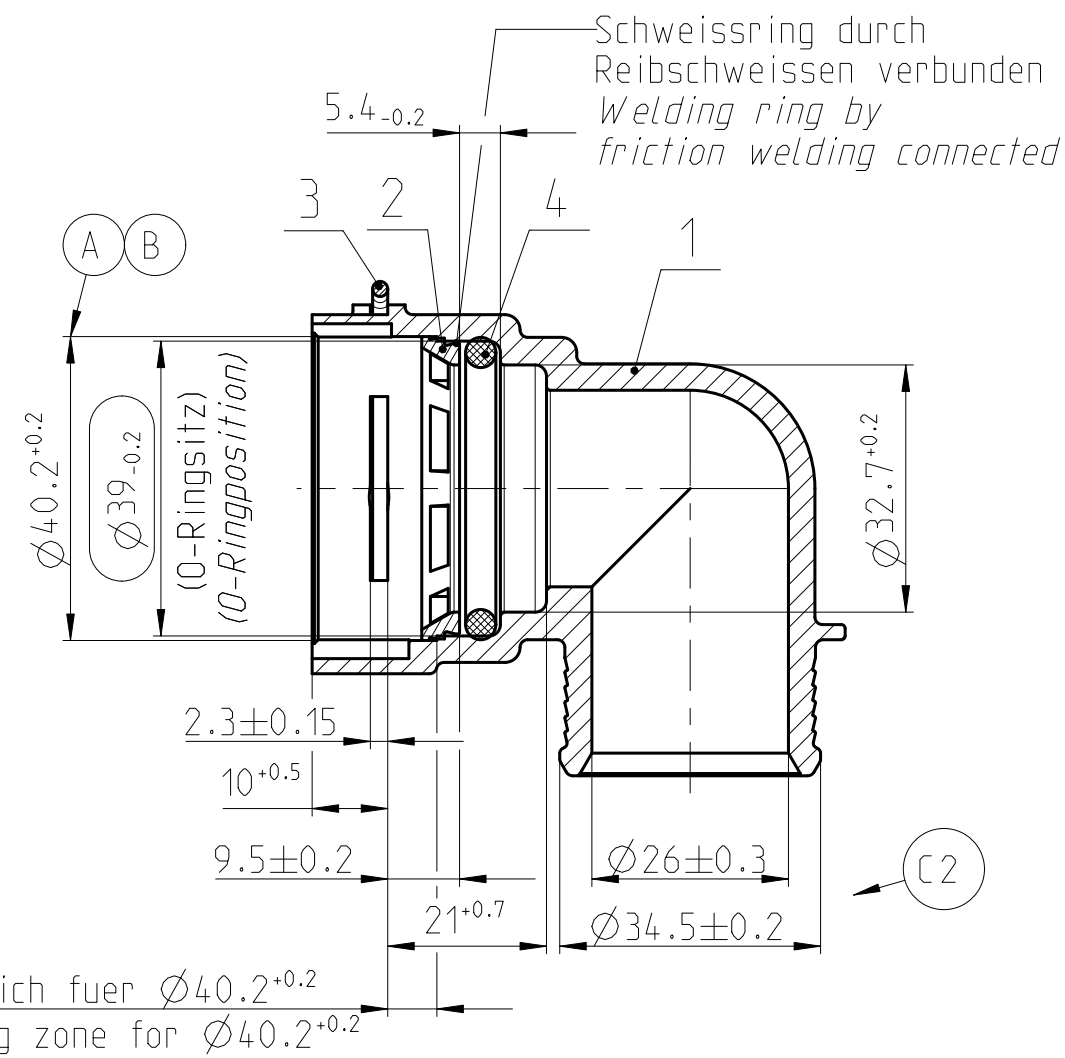


**SPECS &
INFORMATION**

Angebotszeichnung
QUOTATION DRAWING

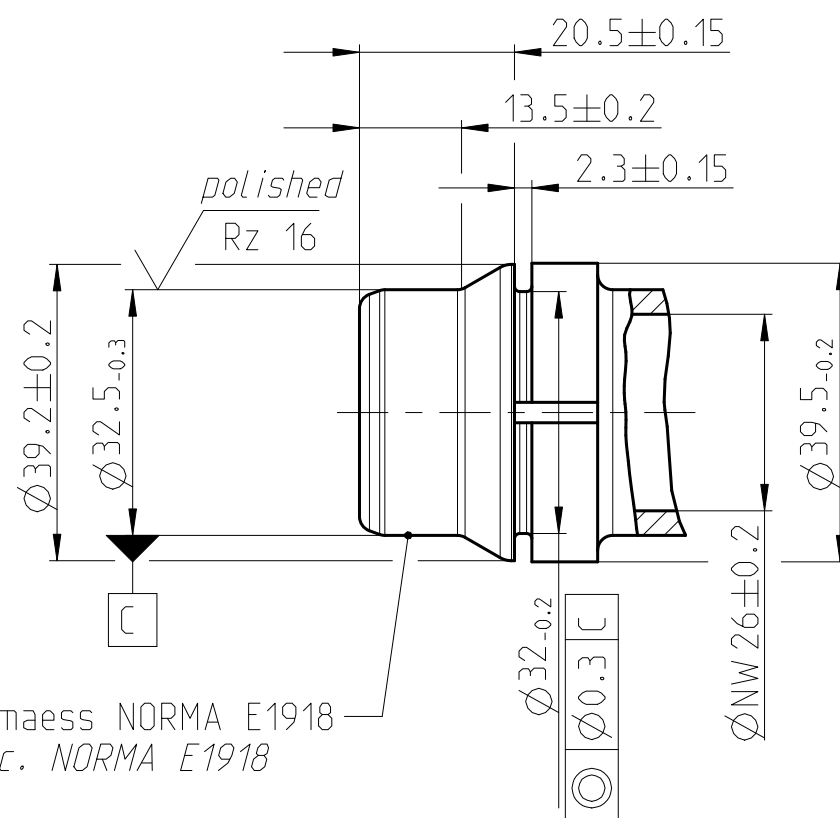
Teil-Nr ITEM-NO	Stueck QTY	Benennung PART - NAME	Werkstoff MATERIAL	Oberflaeche SURFACE
1	1	Housing NW 26-90*	PA66-GF30	black
2	1	Weld ring NW 26	PA66-GF30	black
3	1	Locking bail NW 26	EN 10270-3 -1.4310-NS-2.0	blank
4	1	O-RING 32.0 X 4.0	EPDM-60	black

SCHNITT / SECTION A-A



MASSTAB / SCALE 1:1

Ansicht Stutzen / View spigot
MASSTAB / SCALE 1:1



Nicht angegebene Masse gemass NORMA E1918
Not specified dimension acc. NORMA E1918

NORMAQUICK - ASSEMBLY MARKING	
Customer part-No.:	-
Trademark:	-
Manufacturer code:	NORMA-RSS
NORMA date code:	XX YY
Material code molding part:	>PA66-GF30<

-	-	-	-	-	-	-	-	-	-
-	C	3	1) Messbereich hinzu / measuring zone added 2) Mass entfernt / dimension removed 3) Werkstoffnorm aktualisiert / material spec. updated	-	2012-09-20	TS/IC	Ries	-	-
-	B	1	$\varnothing 39_{-0.2}$ war $\varnothing 38.7_{-0.2}$ $\varnothing 40.2^{+0.2}$ war $\varnothing 39.8^{+0.2}$	604754	2006-09-11	Mertens	Bauer	-	-
-	A	4	Gehaeuse geaendert; 2x Tol ± 0.5 war ± 1 ; $\varnothing 39.8^{+0.2}$ war $\varnothing 40.2^{+0.2}$	604095	2006-02-22	SB/IC	Bauer	-	-
INDEX Teil/ PART	Zeichn. DWG	Anz. QTY.	Aenderung DESCRIPTION		Aend.Nr. CHANGE-NO.	Datum DATE	Bearb. DRAWN	Gepr. CHECKED	
Allgemeintoleranz: GENERAL TOLERANCE:		Form- und Lagetoleranz: FORM AND POS. TOL.:		Abmass fuer Winkel: DEVIATION FOR ANGLE:	Gewicht / WEIGHT: errechnet / calculated	gewogen / actual	Volumen: VOLUME:	Pruefkennzeichnung: TEST MARKING:	
-		-		$\pm 2^\circ$	-	-	- cm ³		
Projektions-Methode 1 1st ANGLE PROJECTION DIN ISO 128-30		Material: see parts list Material-No.: - Oberflaeche: see parts list SURF. QUAL.: -			PART NAME: NORMAQUICK PS3 NW 26-90° locking bail blank				
NORMA-Patentnummer: PATENT NUMBER:		Massstab: SCALE:	Datum/DATE	Name/NAME	Benennung: NORMAQUICK PS3 NW 26-90° Verriegelungsring blank				
-		1:1	2002-02-04	Imago-Gr Bauer					
Bandlaenge: LENGTH OF BAND:		Schutzvermerk nach ISO 16016 beachten CONSIDER AFTER PROTECTION NOTICE ISO 16016							
ZNE:		Kunde / CUSTOMER:							
Ursprung/Anfrage: ENQUIRY-No.:		NORMA Germany GmbH Postfach 1149 • 63461 Maintal © COPYRIGHT BY NORMA Group			Zeichnungs-Nr. / DRAWING-NO.:		INDEX PART DWG TYPE		
9900010287		-			0702 8011 026		00 0C Q		
CAD-SYSTEM Pro/Engineer		DRAWING-NAME: 07028011026_Q			MODEL-NAME: 07028011026		MODEL-TYP: ASSEM		



info@iq-parts.nl
Harsweg 34A
2461 EZ Ter Aar
T +31 252 624 126
The Netherlands