

iQ parts
IQ-PARTS-SHOP.COM

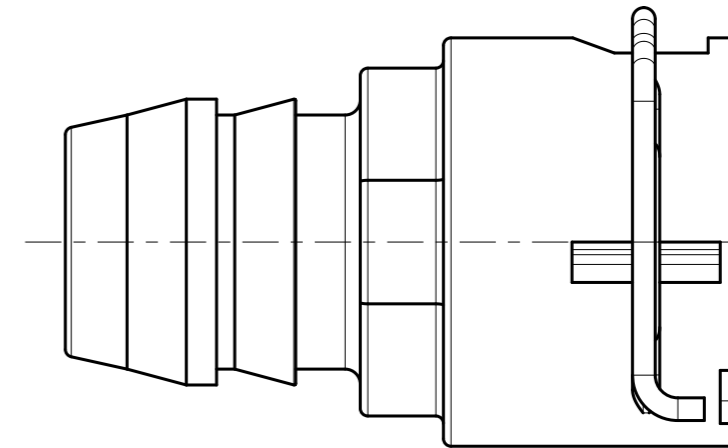
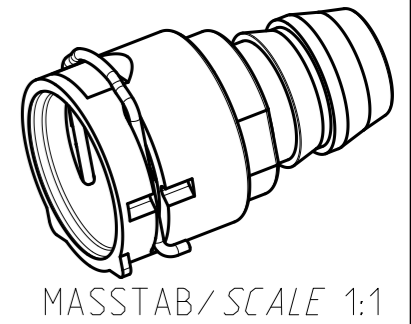
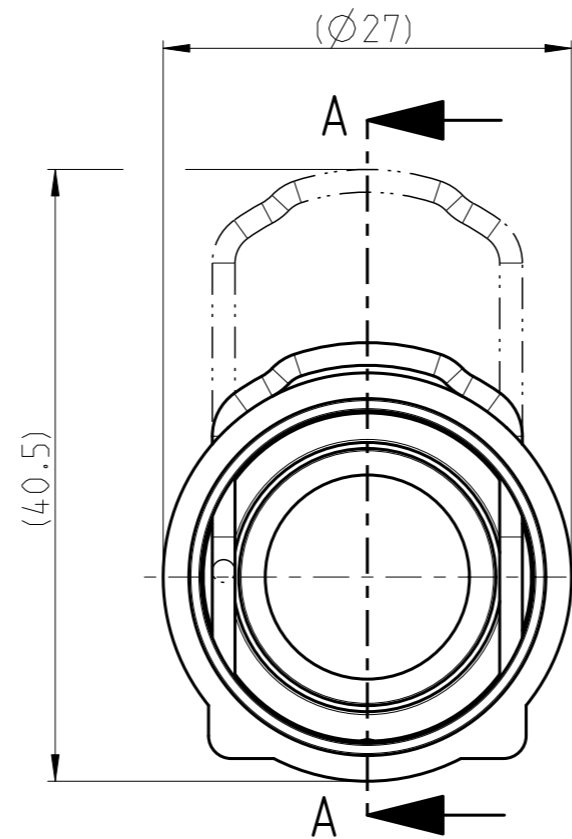
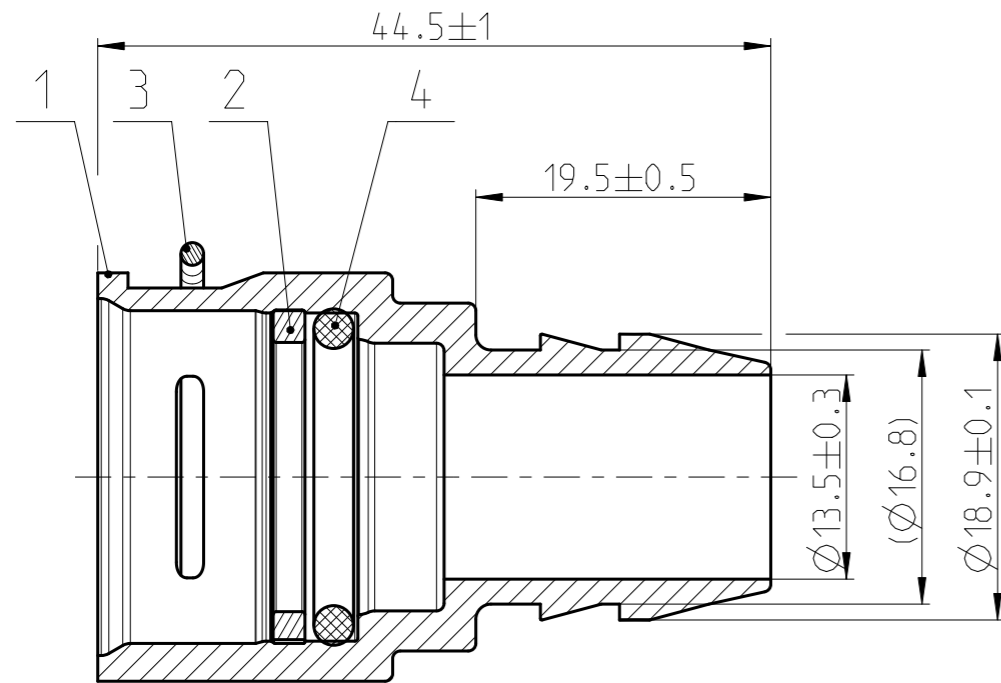


**SPECS &
INFORMATION**

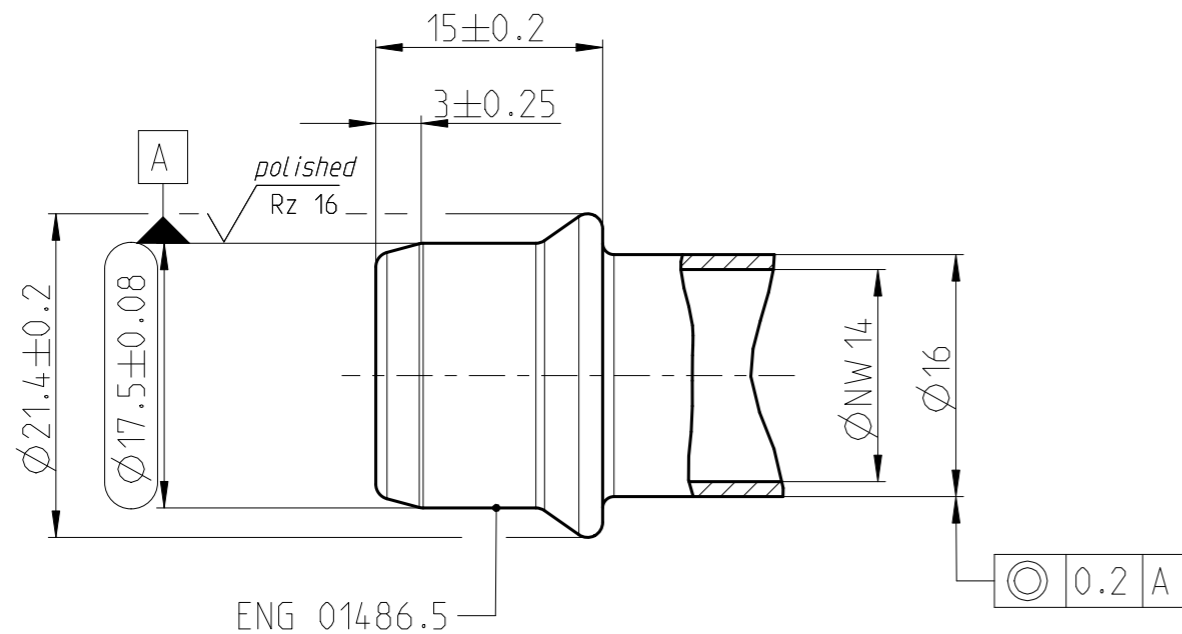
Angebotszeichnung
QUOTATION DRAWING

Teil-Nr ITEM-NO	Stueck QTY	Benennung PART - NAME	Werkstoff MATERIAL	Oberflaeche SURFACE
1	1	Housing NW 14-0°	PA66-GF30	black
2	1	Insert NW 14	PA66-GF30	black
3	1	Locking bail NW 14	EN10270-3-1.4310-NS-1.5	blank
4	1	O-RING 17.0 X 2.62	EPDM-60	black

SCHNITT / SECTION A-A



SCHNITT / SECTION A-A
mit Stutzen / with spigot



Performance features for NQ PS3 - VDA	
Medium	coolant water
Operation temperature	-40°C thru 125°C
Operation pressure	0 to 2 bar, partial pulsating (sinusoidal)

NORMAQUICK - ASSEMBLY MARKING	
Customer part-No.:	-
Trademark:	-
Manufacturer code:	NORMA-RSS
NORMA date code:	XX YY
Material code molding part:	>PA66-GF30<

-	-	-	-	-	-	-	-
-	-	-	-	-	-	-	-
-	-	-	-	-	-	-	-
-	A	3	1) Drawing separated; 2) Marking table added; 3) Text added; 4) View added		-	2013-11-21	Schindler Ries

INDEX Teil PART	Zeichn DWG	Anz. QTY.	Änderung DESCRIPTION	Aend.Nr. CHANGE-NO.	Datum DATE	Bearb. DRAWN	Gepr. CHECKED
-----------------------	---------------	--------------	-------------------------	------------------------	---------------	-----------------	------------------

Allgemeintoleranz: GENERAL TOLERANCE:	Form- und Lagertoleranz: FORM AND POS. TOL.:	Abmass fuer Winkel: DEVIATION FOR ANGLE:	Gewicht / WEIGHT: errechnet CALCULATED	gewogen actual	Volumen: VOLUME:	Pruefkenzeichnung: TEST MARKING:
DIN 16901-130	DIN ISO 2768	±2°	-	-	- cm ³	-

Projektions-Methode 1 1st ANGLE PROJECTION DIN ISO 128-30	Material: Material-No.:	Oberflaeche: SURF. QUAL.:	PART NAME:
	siehe Stueckliste -	siehe Stueckliste -	NORMAQUICK PS3 NW 14-0° Special connector

NORMA-Patentnummer: PATENT NUMBER:	Massstab: SCALE:	Datum/DATE	Name/NAME	Benennung:
-	2:1	2006-11-13	TS/IC	NORMAQUICK PS3 NW 14-0° Sonderkupplung
-	-	2006-11-14	Bauer	-
-	-	-	-	-

Bandlaenge: LENGTH OF BAND:	Schutzvermerk nach ISO 16016 beachten CONSIDER AFTER PROTECTION NOTICE ISO 16016	Kunde / CUSTOMER:	DIN A	SHEET:	SHEETS
-	-	-	3	1	1

ZNE:	Ursprung/Anfrage: ENQUIRY-No.:	NORMA Germany GmbH Postfach 1149 • 63461 Maintal	Zeichnungs-Nr. / DRAWING-NO.:	INDEX PART DWG	TYPE
-	9900014559		0702 8034 014	00	0A
-	-	© COPYRIGHT BY NORMA Group	-	Q	Q

CAD-SYSTEM Pro/Engineer	DRAWING-NAME: 07028034014_Q	SUB.F.:	SUB.FROM:	MODEL-NAME: 07028034014	MODEL-TYP: ASSEM
-	-	-	-	-	-



info@iq-parts.nl
Harsweg 34A
2461 EZ Ter Aar
T +31 252 624 126
The Netherlands