

iQ parts
IQ-PARTS-SHOP.COM

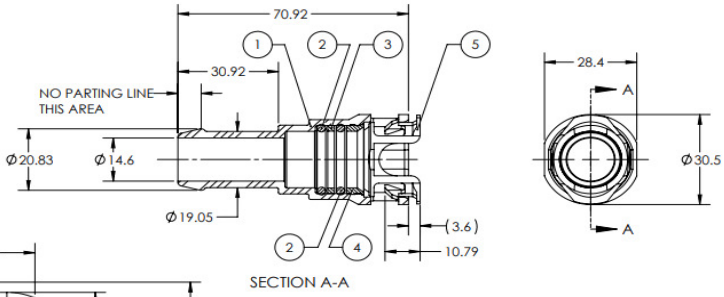
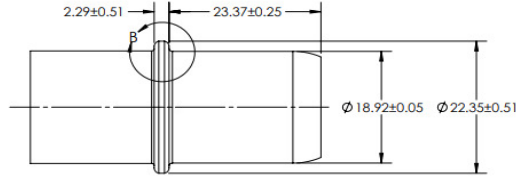
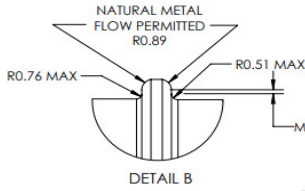


**SPECS &
INFORMATION**

QUOTATION DRAWING



ITEM-NO.	QTY.	PART-NAME	MATERIAL	MATERIAL-SPEC.	SURFACE
1	1	HOUSING	PA66-GF30	ASTM D6779 PA012G30	BLACK
2	2	O-RING	EPDM	SAE J200 M3DA710 A26 B36 C32 EA14 F19 Z1 Z2 Z3 Z1: PEROXIDE CURED EPDM Z2: DUROMETER SHORE A 80-75 Z3: INTERNALLY LUBRICATED	BLACK
3	1	SPACER	PA612	ASTM D6779 PA0520 B43110	NATURAL
4	1	3/4 FLARED OUTER BUSHING	PA66-GF30	ASTM D6779-PA012G30	BLACK
5	1	3/4 PLASTIC RETAINER	PA612	ASTM D6779 PA0520 B43110	NATURAL



NOTES:

- LUBRICATE O-RING PRIOR TO ASSEMBLY WITH ENGINEERING APPROVED LUBRICANT
- ASSEMBLY PLANT INSTRUCTIONS MUST SPECIFY:
 - INSERT TUBE INTO CONNECTOR UNTIL AN AUDIBLE CLICK IS HEARD AND/OR RESISTANCE TO FURTHER INSERTION SIGNIFICANTLY INCREASES.
 - PULL BACK ON THE TUBE IN THE OPPOSITE DIRECTION OF INSERTION WITH A MINIMUM OF 67N FORCE TO ENSURE THE TUBE IS PROPERLY LATCHED
- MATERIAL CONTROL PER GMW 3059 OR WSS-M99P23-C1
- UNLESS OTHERWISE SPECIFIED: ±0.25mm, ANGULAR ±2°



INDEX PART	QTY	REVISION SUMMARY	CHANGE-NO	DATE	DRAWN	CHECKED
- C -	-	ADDED NOTE 4; REMOVED LOCAL-NO. BLOCK	7624	2020-09-25	J.MOULVI	J.BURDEN
- B -	-	MATERIAL SPECIFICATION UPDATED; CONNECTING SPIGOT VIEWS WERE ADDED;	7624	2020-09-09	A.TIKAMBARE	J.BURDEN
- A -	-	UPDATED TO NORMA LATEST DRAWING STANDARDS; REVISED NOTES; REVISED BOM;	3823	2019-07-17	E.ROOME	J.BURDEN

3RD ANGLE PROJECTION	ACCORDING TO: ASME Y14.5-2009	DESCRIPTION:
SCALE: 1:1	DATE: 2014-10-28	SAE QUICK CONNECT Ø3/4 X 180° Ø3/4 HOSE BARB NO RELEASE TABS
DRAWN: D.FANSLER	CHECKED: 2014-10-28	
PROJECT-NO: 5092	NORMA MICHIGAN, INC. 2430 EAST WALTON BLVD. AUBURN HILLS, MI 48320	CUSTOMER:
CAD-SYSTEM: SolidWorks	(C) COPYRIGHT NORMA GROUP DIN ISO 16016	CUSTOMER-NO: -
DRAWING-NAME: 07888043019 Q		NORMA-NO: 0788 8043 019
		INDEX PART: C
		TYPE: Q
		FORMAT: A3
		SHEET: 1/1



info@iq-parts.nl
Harsweg 34A
2461 EZ Ter Aar
T +31 252 624 126
The Netherlands