

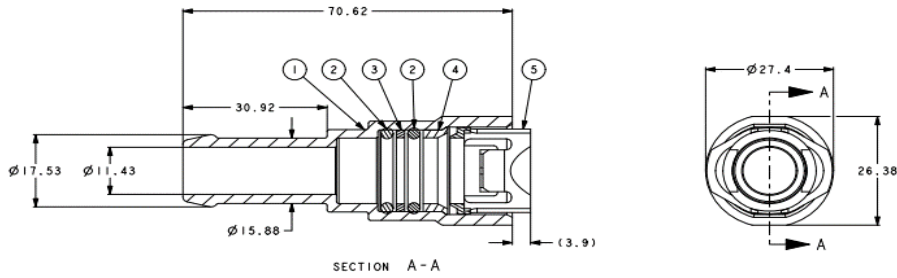
iQ parts
IQ-PARTS-SHOP.COM



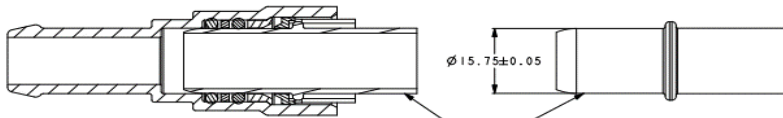
**SPECS &
INFORMATION**

QUOTATION DRAWING

ITEM-NO.	QTY.	PART-NAME	MATERIAL	MATERIAL-SPEC.	SURFACE
1	1	HOUSING	PA66-GF30	ASTM D6779 PA012630	BLACK
2	2	O-RING	EPDM	SAE J200 MSDAT10 A26 B36 C32 EA14 F19 Z1 Z2 Z3 Z1: FERROXIDE CURED Z2: DUROMETER SHORE A 80 - 75 Z3: INTERNALLY LUBRICATED	BLACK
3	1	MID-SPACER	PA612	ASTM D6779 PA0520 B43110	NATURAL
4	1	BUSHING	PA66-GF30	ASTM D6779 PA012630	BLACK
5	1	RETAINER	PA612	ASTM D6779 PA0520 B43110	NATURAL



SCALE 1:1



Ø5/8 CONNECTING SPIGOT PER NORMA ENG21508
(BARTHOLOMEW STYLE - NOT ACC. TO SAE J2944)

NOTES:

- LUBRICATE O-RING PRIOR TO ASSEMBLY WITH ENGINEERING APPROVED LUBRICANT
- ASSEMBLY PLANT INSTRUCTIONS MUST SPECIFY:
 - INSERT TUBE INTO CONNECTOR UNTIL AN AUDIBLE CLICK IS HEARD AND/OR THE RESISTANCE TO FURTHER INSERTION SIGNIFICANTLY INCREASES
 - PULL BACK ON THE TUBE IN THE OPPOSITE DIRECTION OF INSERTION WITH A MINIMUM OF 67N FORCE TO ENSURE THE TUBE IS PROPERLY LATCHED
- UNLESS OTHERWISE SPECIFIED: TOLERANCE ±0.25, ANGULAR ±2°

REV	DATE	BY	CHKD	DESCRIPTION
B	2021-11-20	E.ROOME	J.BURDEN	REVISED TO NORMAL LATEST DRAWING FORMAT
A	2020-09-17	J.MOSLYN	J.BURDEN	UPDATED NOTES, ADDED NOTE 3
A	2020-09-09	A.TIAMBAKE	J.BURDEN	TITLE BLOCK WAS UPDATED, NOTES WERE UPDATED, MATERIAL AND MATERIAL SPEC. COLUMN WERE ADDED, UPDATED TO CHARACTERISTIC DIMS AND DIMS LOCAL-NO BLOCK, CONNECTING SPIGOT DIMS WERE ADDED.

REV	DATE	BY	CHKD	DESCRIPTION
1	2020-09-09	A.TIAMBAKE	J.BURDEN	QUICK CONNECTOR

QUICK CONNECTOR	0788 8037 016	Q	A2	1/1
-----------------	---------------	---	----	-----

1	2	3	4	5	6	7
---	---	---	---	---	---	---



info@iq-parts.nl
Harsweg 34A
2461 EZ Ter Aar
T +31 252 624 126
The Netherlands