

**iQ parts**  
IQ-PARTS-SHOP.COM



**SPECS &  
INFORMATION**

## High Torque Series Clamps XHF Series – 5/8" wide band

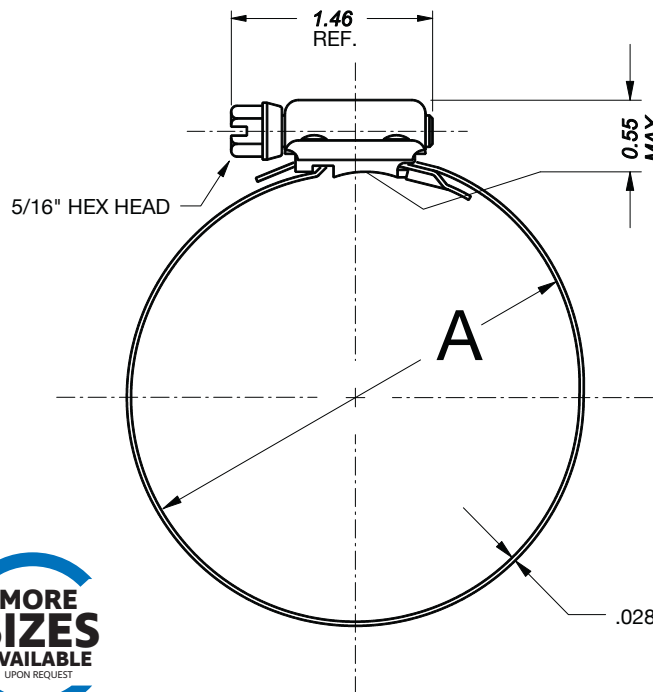
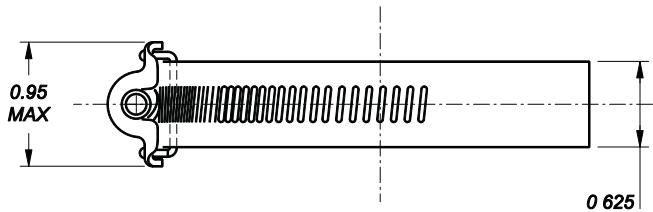
### Heavy Duty Worm Gear Clamp

- Material – all components made with 300 grade stainless steel and the band width is 5/8".
- Screw is longer and has a larger diameter than standard Worm Drive clamps to provide strength under load and to increase the number of threads engaged with the band. This produces a clamp that can withstand higher loads.
- Band material is slightly thicker allowing for higher tensile strength providing a stronger clamp capable of producing higher torque ratings.
- Ultimate torque is a minimum of 100 in lbs, or 11.3 Nm.
- Recommended Installation Torque is 75 in lbs or 8.5 Nm.
- Suitable for applications where a heavier duty clamp is necessary.
- Other material grades may be available upon request.



#### "A" Diameter Range

Part Number	Decimals		Millimeters	
XHF212SS	2.12	1.25	54	32
XHF237SS	2.37	1.50	60	38
XHF262SS	2.62	1.75	67	44
XHF287SS	2.87	2.00	73	51
XHF312SS	3.12	2.25	79	57
XHF337SS	3.37	2.50	86	64
XHF362SS	3.62	2.75	92	70
XHF387SS	3.87	3.00	98	76
XHF412SS	4.12	3.25	105	83
XHF437SS	4.37	3.50	111	89
XHF462SS	4.62	3.75	117	95
XHF487SS	4.87	4.00	124	102
XHF512SS	5.12	4.25	130	108
XHF537SS	5.37	4.50	136	114
XHF562SS	5.62	4.75	143	121
XHF587SS	5.87	5.00	149	127
XHF612SS	6.12	5.25	155	133
XHF637SS	6.37	5.50	162	140
XHF662SS	6.62	5.75	168	146
XHF687SS	6.87	6.00	174	152
XHF712SS	7.12	6.25	181	159
XHF737SS	7.37	6.50	187	165
XHF762SS	7.62	6.75	194	171
XHF787SS	7.87	7.00	200	178
XHF812SS	8.12	7.25	206	184
XHF837SS	8.37	7.50	212	191
XHF862SS	8.62	7.75	219	197
XHF887SS	8.87	8.00	225	203
XHF912SS	9.12	8.25	232	210
XHF937SS	9.37	8.50	238	216
XHF962SS	9.62	8.75	244	222
XHF987SS	9.87	9.00	251	229



**MORE SIZES AVAILABLE UPON REQUEST**





info@iq-parts.nl  
Harsweg 34A  
2461 EZ Ter Aar  
T +31 252 624 126  
The Netherlands