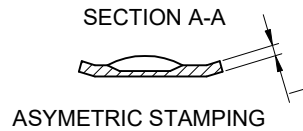
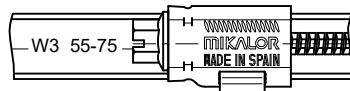
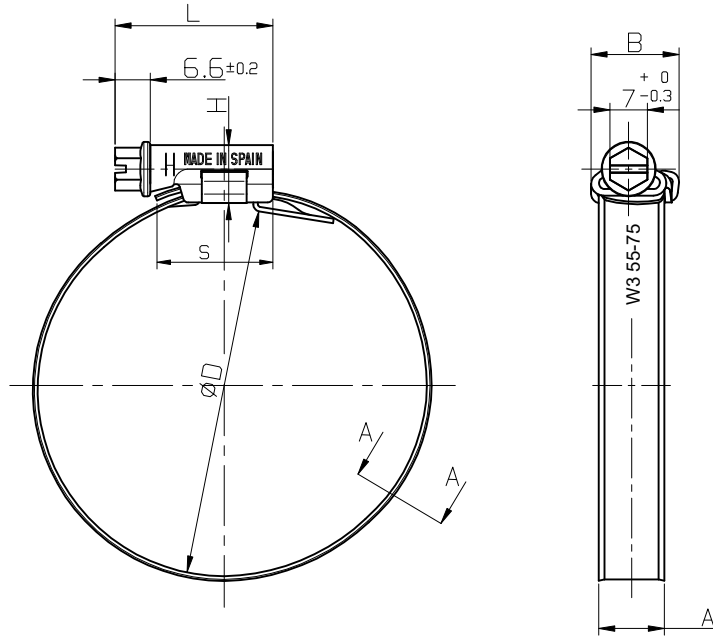


iQ parts
IQ-PARTS-SHOP.COM



**SPECS &
INFORMATION**



$\varnothing D + 2$ APPLICATION	MIKALOR REFERENCE	L $\begin{smallmatrix} +1 \\ -0.5 \end{smallmatrix}$	T ± 0.1	H MAX	B MAX	S MIN	A $\begin{smallmatrix} +0.4 \\ -0.2 \end{smallmatrix}$	PRODUCTION REFERENCE
55-75	08004191	29,6	0,80	11	18,8	19,5	12,2	330261

TECHNICAL INFORMATION

1	MATERIAL: BAND AND HOUSING, STAINLESS STEEL X6Cr17 (Din 1.4016) (AISI-430), SCREW ACC. DIN 3017	
2	FINISH:	
3	ANTICORROSION SPECIFICATION: SALT SPRAY TEST, 200 H ACCORDING TO ASTM B-117 STANDARD MAXIMUM PROPORTION OF 10 % OF BASE METAL CORROSION ALLOWED	
4	MAX. FREE RUNNING TORQUE: = 1.5 Nm	
5	MAX. TIGHTENING TORQUE: 55-75 = 7Nm	MIN. BREAKING TORQUE 55-75 = 8 Nm
6	TORQUE TOLERANCE: $\pm 5\%$	MAX. RECOMMENDED TIGHTENING SPEED (RPM): 540 $\pm 5\%$

M03	03/05/2018 UPDATED $\varnothing D$ REFERENCE MEASUREMENT POINTS	
M02	13/10/2015 UPDATED DRAWING	
M01	Initial Level	18/03/2015 NEW FORMAT
LEVEL	DESCRIPTION	
 SHEET. A-3	CUSTOMER	FAMILY. 08004191
		NAME. ASFA PRO S W3 CLAMP
SCALE.	ENG. LEVEL	INTERNAL PART Nº (1310804)
	M03 03/05/2018	SUBST. BY
	PROPOSAL DRAWING	NOTE.
GENERAL TOL. ± 0.3	DRAW.	JAG SIGNATURE
	APPROVED.	JMG
	DATED.	18/03/15



MIKALOR



info@iq-parts.nl
Harsweg 34A
2461 EZ Ter Aar
T +31 252 624 126
The Netherlands