

iQparts
IQ-PARTS-SHOP.COM



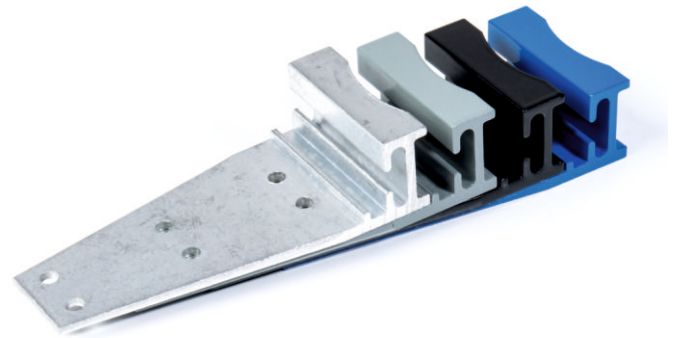
**SPECS &
INFORMATION**

OB - Offset Brackets (Aluminium)

Offset Brackets are used in conjunction with either Uni-Clamps or Banding, and T-channel to create a finger post sign. T-Channel is fixed onto the Offset Bracket with the use of rivets, before the panel is rivetted to the T-channel.

Our Offsets Brackets are available in two sizes, Small or Large, manufactured to suit either Single or Double T-Channel. The 'Punched' option of the Offset Bracket, comes pre-punched with 6x5mm holes, suitable for 4.8mm Rivets.

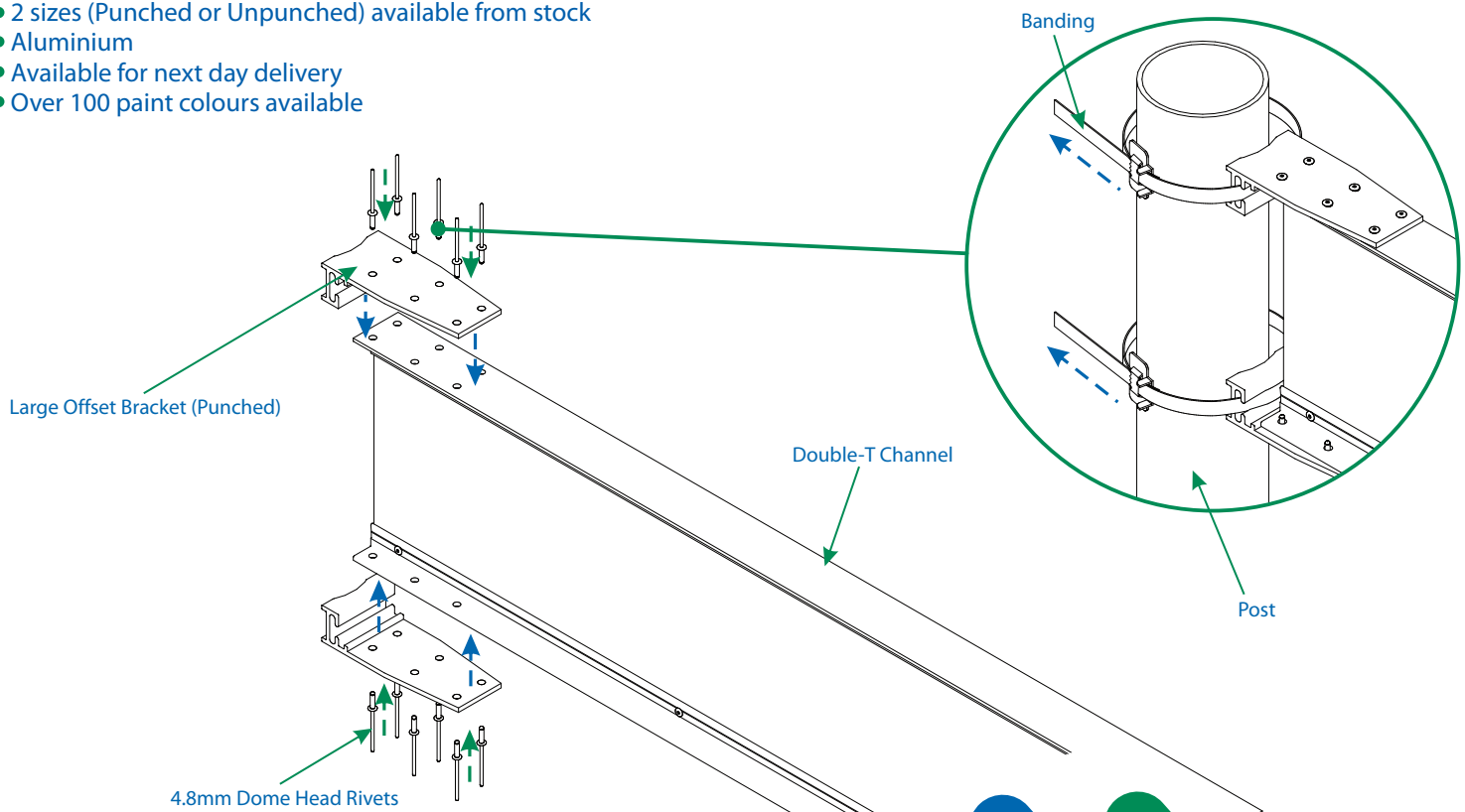
Our Offset Brackets are stocked in both grey and black, as well as self colour, in all variants. Bespoke colours are available upon request.



Key Facts

- 2 sizes (Punched or Unpunched) available from stock
- Aluminium
- Available for next day delivery
- Over 100 paint colours available

OB - Small Offset Brackets - Punched in self colour & painted options



Product Options

Finish Options



Raw Material

Aluminium Extrusion

Tee-Channel Required

Small Brackets require Single-T Channel

Large Brackets require Double-T Channel

Rivet Type

6x 4.8mm Dome Head Rivets (per bracket)

Size & Finish

OB - OFFSET BRACKETS (ALUMINIUM)

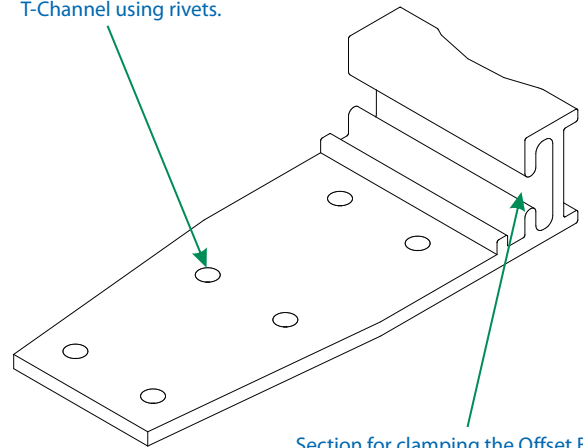
* RIVETS SOLD SEPERATELY *

| DESCRIPTION | COLOUR | CODE | MOQ | STOCK |
|-----------------------------------|-------------|-------|-----|-------|
| Small Offset Bracket (Un-punched) | Self Colour | OBS | 100 | ✓ |
| Small Offset Bracket (Un-punched) | Grey | OBSG | 100 | ✓ |
| Small Offset Bracket (Un-punched) | Black | OBSB | 100 | ✓ |
| Small Offset Bracket (Un-punched) | Painted | OBSL | 100 | ✓ |
| Small Offset Bracket (Punched) | Self Colour | OBPS | 100 | ✓ |
| Small Offset Bracket (Punched) | Grey | OBPSG | 100 | ✓ |
| Small Offset Bracket (Punched) | Black | OBPSB | 100 | ✓ |
| Small Offset Bracket (Punched) | Painted | OBPSL | 100 | ✓ |
| Large Offset Bracket (Un-punched) | Self Colour | OBL | 100 | ✓ |
| Large Offset Bracket (Un-punched) | Grey | OBLG | 100 | ✓ |
| Large Offset Bracket (Un-punched) | Black | OBLB | 100 | ✓ |
| Large Offset Bracket (Un-punched) | Painted | OBLP | 100 | ✓ |
| Large Offset Bracket (Punched) | Self Colour | OBPL | 100 | ✓ |
| Large Offset Bracket (Punched) | Grey | OBPLG | 100 | ✓ |
| Large Offset Bracket (Punched) | Black | OBPLB | 100 | ✓ |
| Large Offset Bracket (Punched) | Painted | OBPLP | 100 | ✓ |



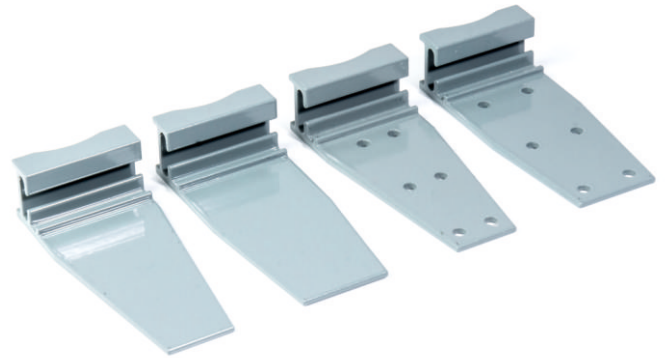
Requires 6x 4.8mm Dome Head Rivets (per bracket)

5mm Holes to join the Offset Bracket to T-Channel using rivets.



OBPL - EXAMPLE

Section for clamping the Offset Bracket between the post and the Uni-Clamp or to feed banding through.



Full range of stock Offset Brackets in grey

What colour do you require ?

With a large range of stock powder coating colours available, we are sure to have the perfect colour to match your requirements. RAL, BS and Pantone colours also available.





iq
parts
IQ-PARTS-SHOP.COM

info@iq-parts.nl
Harsweg 34A
2461 EZ Ter Aar
T +31 252 624 126
The Netherlands