

iQ parts
IQ-PARTS-SHOP.COM



**SPECS &
INFORMATION**

MG1 - MG1 Brackets

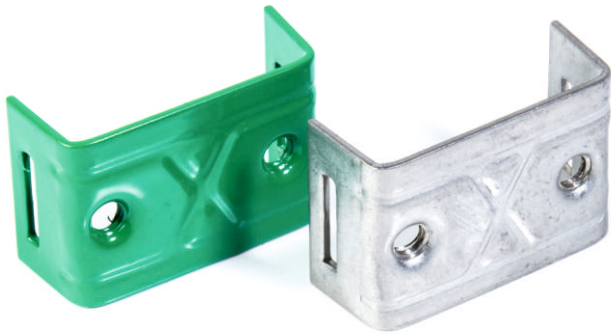
Our MG1 Bracket is for post mounting a panel/item using banding. The panel/item is bolted directly into the tapped holes on the bracket using 2x M8x16mm hex head bolts and polywashers.

The MG1 bracket is manufactured from Grade 304 stainless steel and embossed for structural integrity.

Our MG1 Brackets are stocked as self colour only but can be painted to a bespoke colour.

Key Facts

- Grade 304 Stainless Steel
- Available for next day delivery
- Over 100 paint colours available



MG - MG1 Bracket in self colour & painted options

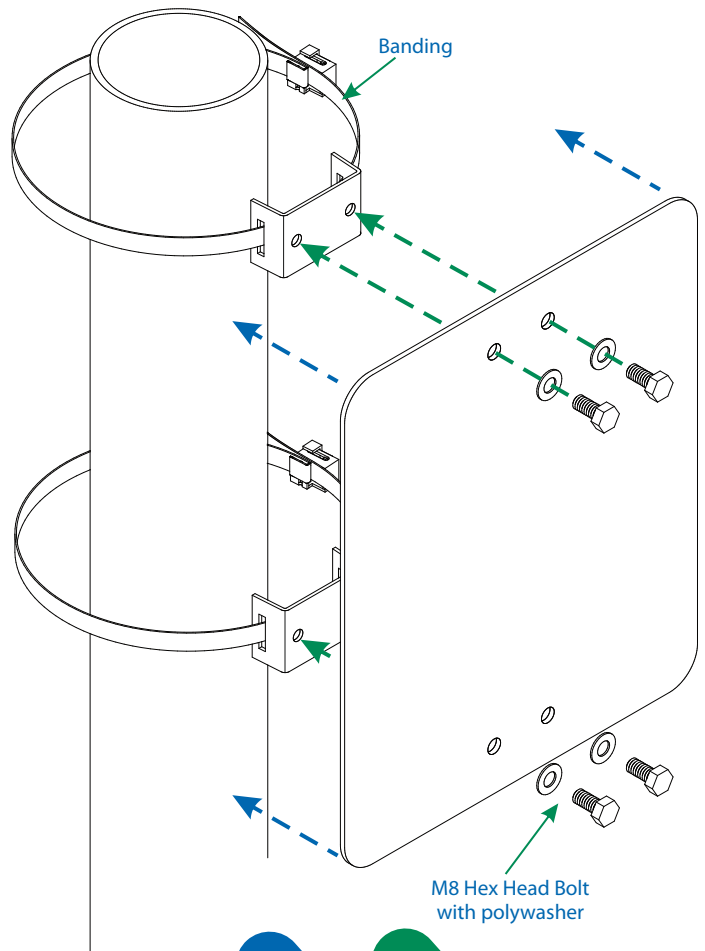
Finish

MG - MG1 BRACKETS

DESCRIPTION	COLOUR	GRADE	CODE	MOQ	STOCK
MG1 Bracket	Self Colour	304	MG1	100	✓
MG1 Bracket	Painted	304	MG1P	100	



Requires 2x M8x16mm Hex head bolts with polywashers (per bracket)



Product Options

Finish Options



Natural



Painted to RAL or BS

Raw Material

2.0mm Grade 304 Stainless Steel

Banding Requirement & Width

1x Banding up to 19mm (per bracket)

Bolt Type

2x M8x16mm Hex Head Bolts with polywashers (per bracket)



info@iq-parts.nl
Harsweg 34A
2461 EZ Ter Aar
T +31 252 624 126
The Netherlands