

**iQparts**  
IQ-PARTS-SHOP.COM



**SPECS &  
INFORMATION**

# Clamping Ring with Wing Nut

---

INFICON ISO-KF fittings are manufactured according to ISO 2861/1, DIN 28403 and Pneurop 6606. Our quality fittings are the standard components for all vacuum and high vacuum applications. The high quality INFICON components are designed and tested for leak rates less than  $1 \times 10^{-9}$  mbar l/s.

## BENEFITS

---

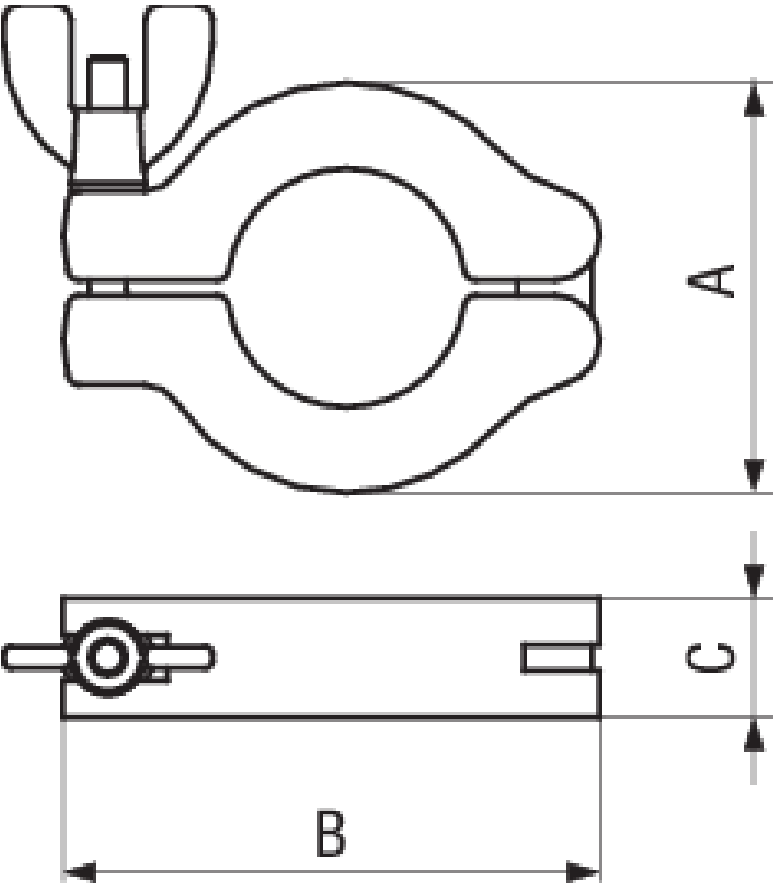
- Competitively priced
- Design and measures follow strictly international respected standards
- World wide logistics
- 2011/65/EU RoHS compliant



SPECIFICATIONS

Type	DN 10 - 16 ISO-KF	DN 20 - 25 ISO-KF	DN 32 - 40 ISO-KF	DN 50 ISO-KF
Dimension A	45	55	70	95
Dimension B	61	72	90	123
Dimension C	16	16	18	25
Clamping ring half:	Aluminum 380.0	Aluminum 380.0	Aluminum 380.0	Aluminum 380.0
Bolt:	Steel nickel plated	Steel nickel plated	Steel nickel plated	Steel nickel plated
Nut:	Zinc alloy nickel plated	Zinc alloy nickel plated	Zinc alloy nickel plated	Zinc alloy nickel plated

DIMENSIONS







**iq**  
**parts**  
IQ-PARTS-SHOP.COM

info@iq-parts.nl  
Harsweg 34A  
2461 EZ Ter Aar  
T +31 252 624 126  
The Netherlands