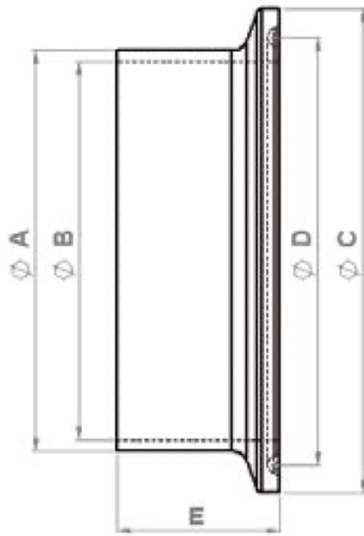


iQ parts
IQ-PARTS-SHOP.COM



**SPECS &
INFORMATION**

Flanchstutzen Sondergrößen
Werkstoffe: AISI 316L (1.4404)
Oberfläche: Hygieneklasse H3
Innen: <0,8 µm, Außen: <1,6 µm



| Sondergrößen | Rohr AD A | Rohr ID B | Flansch AD C | Nut D | Lang (KL) E | Item-No. |
|----------------------|---------------------|---------------------|------------------------|-----------------|-----------------------|----------|
| 5" | 129,0 | 125,0 | 144,4 | 134,4 | 28,0 | 20414500 |
| 8" | 204,0 | 200,0 | 217,4 | 207,4 | 28,0 | 20414700 |
| 8" (US) | 203,2 | 197,66 | 217,4 | 207,4 | 28,0 | 20414710 |
| 10" (DN250) KK/short | 254,0 | 250,0 | 268,0 | 258,0 | 28,0 | 20414800 |
| 10" (DN250) KL/long | 254,0 | 250,0 | 268,0 | 258,0 | 66,0 | 20414805 |
| 10 sched. 5 | 273,0 | 266,3 | 286,1 | 276,0 | 28,0 | 20414850 |
| 12" (DN300) | 306,0 | 300,0 | 319,0 | 309,0 | 28,0 | 20414900 |
| 12" (DN300) | 304,0 | 300,0 | 319,0 | 309,0 | 28,0 | 20414901 |



info@iq-parts.nl
Harsweg 34A
2461 EZ Ter Aar
T +31 252 624 126
The Netherlands