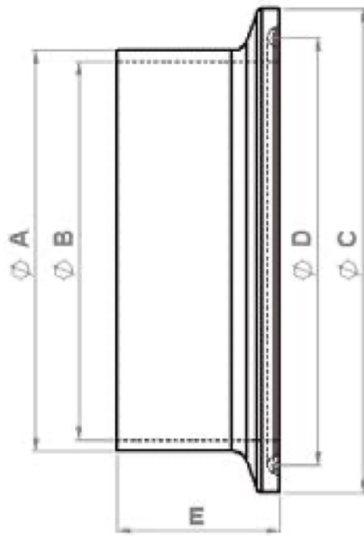


iQ parts
IQ-PARTS-SHOP.COM



**SPECS &
INFORMATION**

Ferrules Non-Standard
Material: AISI 316L (1.4404)
Surface acc. to Hygiene Class H3
Inner: <0,8 µm, Outer: <1,6 µm



Non-Standard	Tube OD A	Tube ID B	Flange OD C	Groove D	Length E	Item-No.
5"	129,0	125,0	144,4	134,4	28,0	20414500
8"	204,0	200,0	217,4	207,4	28,0	20414700
8" (US)	203,2	197,66	217,4	207,4	28,0	20414710
10" (DN250) KK/short	254,0	250,0	268,0	258,0	28,0	20414800
10" (DN250) KL/long	254,0	250,0	268,0	258,0	66,0	20414805
10 sched. 5	273,0	266,3	286,1	276,0	28,0	20414850
12" (DN300)	306,0	300,0	319,0	309,0	28,0	20414900
12" (DN300)	304,0	300,0	319,0	309,0	28,0	20414901



info@iq-parts.nl
Harsweg 34A
2461 EZ Ter Aar
T +31 252 624 126
The Netherlands