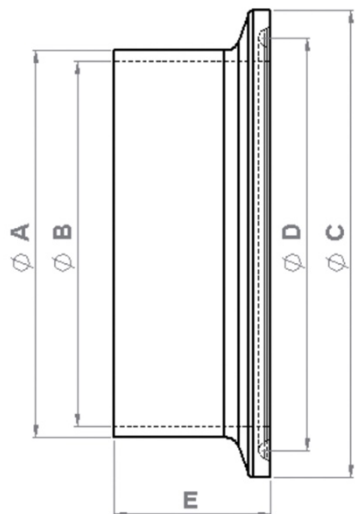


iQ parts
IQ-PARTS-SHOP.COM



**SPECS &
INFORMATION**

Dichtung DIN32676 Reihe A
 Werkstoff: EPDM
 Temperatureinsatzbereich:
 -30°C bis 140°C



| DIN 32676 | | Reihe A | | Item-No. |
|--------------|----------------------------|----------------------------|--|----------|
| Nenngröße | Flansch AD ϕ in mm | Flansch ID ϕ in mm | | |
| DN 06 | 22,0 | $\geq 6,2$ | | 20499900 |
| DN 08 | 22,0 | $\geq 8,2$ | | 20499950 |
| DN 10 | 34,0 | $\geq 10,2$ | | 20500000 |
| DN 10 | 50,5 | $\geq 10,2$ | | 20500020 |
| DN 15 | 34,0 | $\geq 16,2$ | | 20500050 |
| DN 15 | 50,5 | $\geq 16,2$ | | 20500070 |
| DN 20 | 34,0 | $\geq 20,2$ | | 20500100 |
| DN 20 | 50,5 | $\geq 20,2$ | | 20500120 |
| DN 25 | 50,5 | $\geq 26,2$ | | 20500150 |
| DN 32 | 50,5 | $\geq 32,2$ | | 20500200 |
| DN 40 | 50,5 | $\geq 38,2$ | | 20500250 |
| DN 50 | 64,0 | $\geq 50,2$ | | 20500300 |
| DN 65 | 91,0 | $\geq 66,2$ | | 20500350 |
| DN 80 | 106,0 | $\geq 81,2$ | | 20500400 |
| DN 100 | 119,0 | $\geq 100,2$ | | 20500450 |
| DN 125 | 155,0 | $\geq 125,2$ | | 20500500 |
| DN 150 | 183,0 | $\geq 150,2$ | | 20500550 |
| DN 200 | 233,5 | $\geq 200,2$ | | 20500600 |
| DN 250 (10") | 268,0 | $\geq 250,2$ | | 20510835 |
| DN 300 (12") | 319,0 | $\geq 300,2$ | | 20510900 |



info@iq-parts.nl
Harsweg 34A
2461 EZ Ter Aar
T +31 252 624 126
The Netherlands