

iQ parts
IQ-PARTS-SHOP.COM



**SPECS &
INFORMATION**



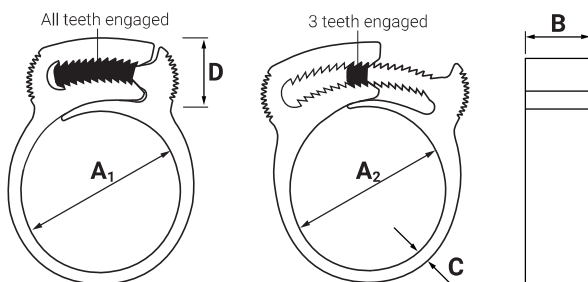
Herbie® Clip

Designed and manufactured by HCL to the highest quality the **Herbie® Clip** is the original double grip plastic hose clamp. It offers exceptional strength due to its unique double row of interlocking toothed jaws which offer over twice the clamping forces achieved by similar single toothed products.

The **Herbie® Clip** is a high quality hose clamp made from Nylon 6.6. and offers the largest range of Snap Fit Style Hose Clamps with 38 sizes ranging from 5.6mm to 169mm diameter. The clamp is highly versatile and lends itself to a wide variety of applications meaning that Herbie® Clips can be found in Agricultural Machinery, Automotive Engines, White Goods and many other applications.

Key Features

- Double Row of Interlocking Teeth
- Easy to Install with Pliers
- Reusable & releasable
- Minimal Leak Path
- Advanced Tooling for Production Lines
- Non-Corrosive, Non-Conductive, Non-Magnetic
- High Pressure resistance – over 30 bar (depends on hose & spigot)
- Choice of materials (Black Standard)
- Choice of colours



Dimensions & Part Numbers						
HCL Part No	Diameter Range (A ₁ -A ₂) mm / inch	Band Width (B) mm / inch	Band Thickness (C) mm / inch	Head Height (D) mm / inch	Nylon 6.6 Weight grams/ounces	
HC-A	5.4 – 6.3 / 0.21 – 0.25	4.0 / 0.16	1.4 / 0.055	8.4 / 0.33	0.50 / 0.018	
HC-AA	6.4 – 8.7 / 0.25 – 0.34	4.6 / 0.18	1.7 / 0.067	10.0 / 0.39	0.82 / 0.029	
HC-B	8.0 – 9.2 / 0.32 – 0.36	4.5 / 0.18		9.5 / 0.37	0.82 / 0.029	
HC-BB	9.1 – 10.5 / 0.36 – 0.41	4.4 / 0.17		11.0 / 0.43	1.01 / 0.036	
HC-C	10.3 – 12.0 / 0.41 – 0.47	5.9 / 0.23		12.4 / 0.49	1.75 / 0.062	
HC-CC	11.3 – 13.4 / 0.45 – 0.53	6.3 / 0.25		12.6 / 0.50	1.92 / 0.068	
HC-D	12.3 – 14.2 / 0.48 – 0.56	5.9 / 0.23	2.1 / 0.083	12.2 / 0.48	1.75 / 0.062	
HC-E	13.8 – 15.3 / 0.54 – 0.60	7.3 / 0.29		2.1 / 0.083	13.7 / 0.54	2.88 / 0.102
HC-F	14.9 – 17.4 / 0.59 – 0.69	7.2 / 0.28		2.2 / 0.087	13.1 / 0.52	3.05 / 0.108
HC-G	17.0 – 19.4 / 0.67 – 0.76	7.0 / 0.28		2.1 / 0.083	12.7 / 0.50	2.79 / 0.098
HC-H	18.2 – 21.0 / 0.72 – 0.83	7.2 / 0.28		2.2 / 0.087	12.8 / 0.50	3.06 / 0.108
HC-J	20.7 – 23.7 / 0.82 – 0.93	6.4 / 0.25		2.1 / 0.083	14.5 / 0.57	3.42 / 0.121
HC-K	22.3 – 25.2 / 0.88 – 0.99	7.2 / 0.28			13.1 / 0.52	3.54 / 0.125
HC-L	25.1 – 28.2 / 0.99 – 1.11	7.2 / 0.28			13.1 / 0.52	3.57 / 0.126
HC-M	26.4 – 29.9 / 1.04 – 1.18	8.0 / 0.32		2.2 / 0.087	13.6 / 0.54	4.91 / 0.173
HC-N	29.4 – 32.7 / 1.16 – 1.29	9.1 / 0.36		2.1 / 0.083	13.6 / 0.54	5.54 / 0.196
HC-P	32.3 – 35.3 / 1.27 – 1.39	9.3 / 0.37	2.2 / 0.087	13.9 / 0.55	5.92 / 0.209	
HC-Q	35.2 – 38.7 / 1.39 – 1.52	9.0 / 0.35		13.7 / 0.54	6.41 / 0.226	
HC-R	37.4 – 40.9 / 1.47 – 1.61	9.3 / 0.37	2.1 / 0.083	13.3 / 0.52	6.42 / 0.227	
HC-S	40.7 – 44.3 / 1.60 – 1.75	9.1 / 0.36		13.0 / 0.51	6.49 / 0.229	
HC-T	43.3 – 47.2 / 1.71 – 1.86	8.9 / 0.35		13.1 / 0.52	6.56 / 0.232	
HC-U	46.3 – 50.2 / 1.82 – 1.98	8.9 / 0.35		14.3 / 0.56	7.06 / 0.249	
HC-V	49.2 – 53.6 / 1.94 – 2.11	9.1 / 0.36		14.7 / 0.58	7.99 / 0.282	
HC-W	52.7 – 56.4 / 2.08 – 2.22	8.8 / 0.35		14.8 / 0.58	8.06 / 0.285	
HC-X	54.8 – 59.4 / 2.16 – 2.34	9.3 / 0.37		2.4 / 0.095	15.6 / 0.61	9.80 / 0.346
HC-59	59.3 – 64.5 / 2.34 – 2.54	9.1 / 0.36		2.5 / 0.099	17.2 / 0.68	11.01 / 0.389
HC-64	63.5 – 66.7 / 2.50 – 2.63	9.1 / 0.36		2.6 / 0.102	15.6 / 0.61	9.47 / 0.334
HC-66-534B	65.2 – 70.3 / 2.57 – 2.77	9.3 / 0.37		2.0 / 0.079	15.3 / 0.60	9.48 / 0.335
HC-70	70.4 – 75.5 / 2.77 – 2.97	9.4 / 0.37	2.6 / 0.102	15.3 / 0.60	11.82 / 0.417	
HC-75	74.2 – 80.0 / 2.92 – 3.15	9.3 / 0.37	2.5 / 0.099	16.8 / 0.66	13.46 / 0.475	
HC-80	79.9 – 84.4 / 3.15 – 3.33	9.0 / 0.35	3.1 / 0.122	17.6 / 0.69	12.62 / 0.445	
HC-85	84.8 – 89.8 / 3.34 – 3.54	8.9 / 0.35	2.5 / 0.099	17.3 / 0.68	11.98 / 0.423	
HC-91	87.8 – 94.6 / 3.46 – 3.73	9.5 / 0.37	2.7 / 0.106	16.2 / 0.64	14.45 / 0.510	
HC-96	95.5 – 101.6 / 3.76 – 4.00	8.5 / 0.33	2.5 / 0.099	17.6 / 0.69	13.80 / 0.487	
HC-105	104.3 – 110.4 / 4.11 – 4.35	8.6 / 0.34	2.6 / 0.102	17.2 / 0.68	14.30 / 0.505	
HC-109	106.9 – 114.0 / 4.21 – 4.49	9.0 / 0.35	2.5 / 0.099	17.7 / 0.70	15.94 / 0.563	
HC-115	114.0 – 121.9 / 4.49 – 4.80	9.4 / 0.37	2.7 / 0.106	17.3 / 0.68	19.81 / 0.699	
HC-163	162.2 – 169.3 / 6.39 – 6.67	9.9 / 0.39	2.5 / 0.099	15.3 / 0.60	18.58 / 0.656	

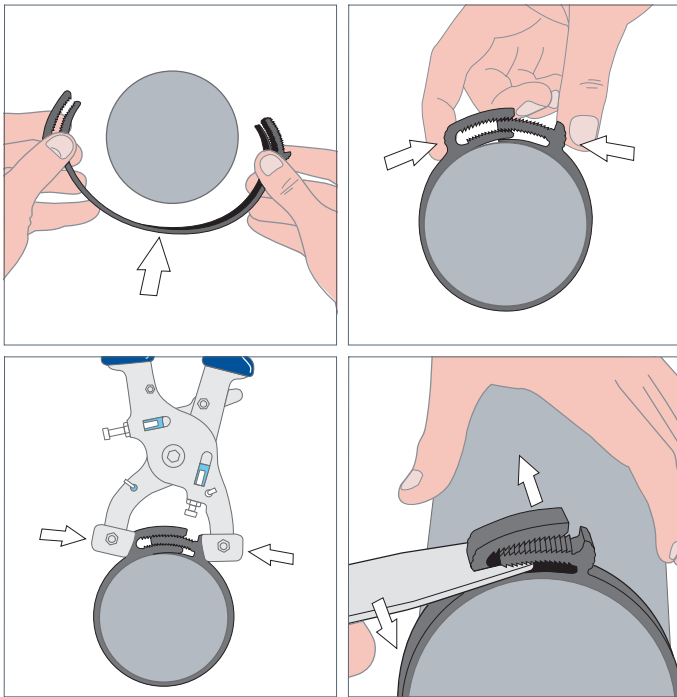
IMPORTANT: All dimensions and weights are measured in their 'Dry as Moulded' state (DAM).
TOLERANCE: Dimensions +/- 1% or 0.1mm whichever is the greatest, Weights +/- 2.5%.

Herbie® Clip

Basic Facts

Diameter Range	5.6mm – 169mm
Operating Temperature – °C	PA66 (Nylon 6.6.) Max Long term Temp 125°C (255°F) – Occasional Peak Temp 170°C (340°F) PP (Polypropylene) Max Long term Temp 60°C (140°F) – Occasional Peak Temp 99°C (195°F)
Specifications	RoHS compliant
Hazardous Goods	No
Flammability	PA66 (Nylon 6.6.) UL 94 V-2
Standard Material	Polyamide 6.6 (PA66) – Polypropylene (PP) on request
Standard Colour	Black (other colours on request)

Fitting and Installation



Installation and Removal Tools



Manual Fitting Tool



Manual Removal Tool



Pneumatic Calliper Tool



Pneumatic Piston Tool

Control Box

Developed exclusively for High volume production line installation HCL's Control Box offers the following features:

- HMI (Human Machine Interface) touch screen control
- Digital control of air pressure – to maintain a consistent tightening force
- Digital control of clamping time – to maintain a consistent tightening time
- Dry cycle detection (tool option) – Detects tool use without a clip being in place
- In process advisory information screens
- Batch and unit count control
- Supervisory control
- Adjustable orientation of the HMI screen



Applications and Markets



Automotive

Medical

Hydromassage

Agricultural

White Goods



info@iq-parts.nl
Harsweg 34A
2461 EZ Ter Aar
T +31 252 624 126
The Netherlands