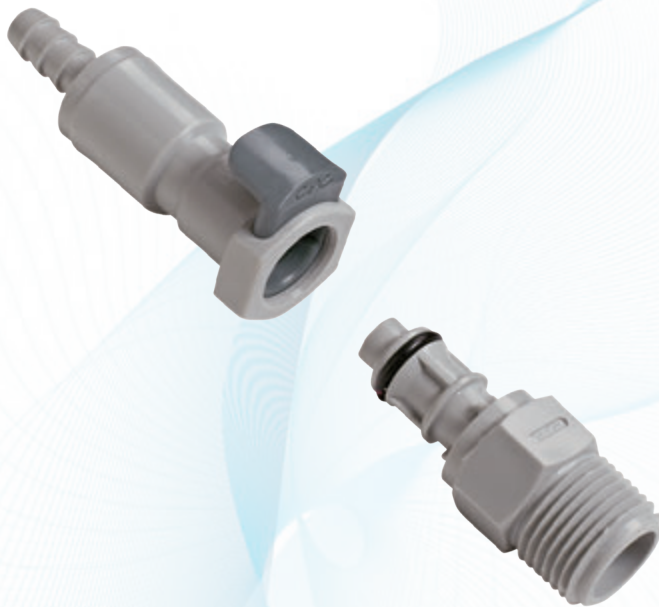


iQparts
IQ-PARTS-SHOP.COM



**SPECS &
INFORMATION**

EFC12 SERIES CONNECTOR



Specifications ● ● ●

PRESSURE:

Vacuum to 105 psi, 7.2 bar

TEMPERATURE:

32°F to 160°F (0°C to 71°C)

MATERIALS:

Main components and valves: Polypropylene

Thumb latch: Polypropylene

Valve spring: 316 stainless steel

Panel mount gasket: EPDM

External springs: 302 stainless steel

O-rings: EPDM

COLOR:

Gray with dark gray latch

TUBING SIZES:

1/4" and 3/8" ID, 6.4mm and 9.5mm ID

WARNING: Pressure, temperature, chemicals, and operating environment can affect the performance of couplings. It is the customer's responsibility to test the suitability of CPC's products in their own application conditions.^a

The **9/32" flow EFC12 Series couplings** feature a high efficiency valve design that provides a greater flow capability than any other coupling its size. Chemically resistant polypropylene material makes it ideal for harsh environments. The EFC12 Series adds a bulkhead panel mount option for tight seals against tank walls and drums.

FEATURES

High efficiency valve

Plastic thumb latch

Polypropylene material

Compatible

BENEFITS

More flow than PLC Series in a compact size

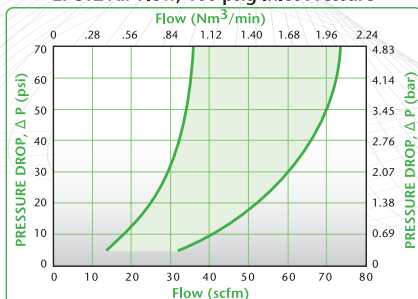
Fewer moving parts

Chemically resistant and gamma sterilizable

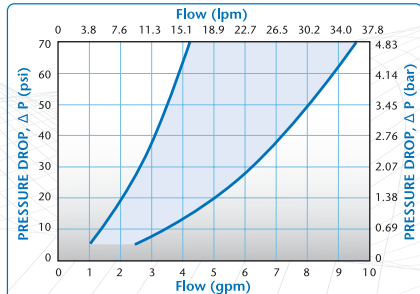
Mates with most APC couplings

These graphs are intended to give you a general idea of the performance capabilities of each product line. The shaded area of each graph represents the operating range of the product family, i.e., upper and lower values are shown. Therefore, depending on the exact coupling configurations selected, you can reasonably expect values to fall within the shaded area.

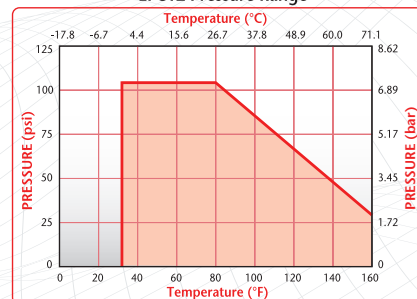
EFC12 Air Flow, 100 psig Inlet Pressure



EFC12 Water Flow



EFC12 Pressure Range



Liquid Flow Rate Information for Couplings

The chart below shows the flow rate for CPC couplings. Each coupling was tested with water at 70°F (21°C). To determine flow rates for specific coupling configurations use the formula at the right.

$$Q = C_v \sqrt{\frac{\Delta P}{S}}$$

Q = Flow rate in gallons per minute

C_v = Average coefficient across various flow rates (see chart)

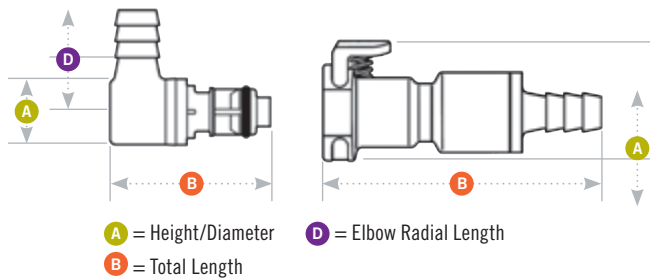
ΔP = Pressure drop across coupling (psi)

S = Specific gravity of liquid

C_v VALUES FOR EFC12 COUPLINGS

BODIES \ INSERTS	EFC12 20004	EFC12 20004	EFC12 20006	EFC12 20006	EFC12 22004	EFC12 22004	EFC12 22006	EFC12 22006	EFC12 24004	EFC12 24004
EFC10412	0.51	0.51	0.51	0.51	0.50	0.45	0.50	0.50	0.51	0.51
EFC10612	0.61	0.51	1.13	0.72	0.50	0.45	0.81	0.69	0.51	0.72
EFC16412	0.51	0.51	0.51	0.51	0.50	0.45	0.50	0.50	0.51	0.51
EFC16612	0.61	0.51	1.13	0.72	0.50	0.45	0.81	0.69	0.51	0.72
EFC17412	0.51	0.51	0.51	0.51	0.50	0.45	0.50	0.50	0.51	0.51
EFC17612	0.61	0.51	1.13	0.72	0.50	0.45	0.81	0.69	0.51	0.72

EFC12 DIMENSIONS



Panel Dimensions

	PANEL OPENING	PANEL THICKNESS MAX.-MIN.	PANEL NUT HEX	PANEL NUT THREAD
COUPLING BODIES	see drawing	.25 - .03	13/16	11/16-24UNF

Ø .72"

.14"

.78"

EFC Series
Gasket Thickness: .06"
Mounting Hole: .720" diameter
Coupling Spacing: 1.25" min.
Greenlee® 720 Keyway Punch and
730BB-3/4 Hole Punch.

Coupling Bodies • POLYPROPYLENE

TERMINATION	TUBING/THREAD SIZE	METRIC EQ.	STRAIGHT THRU	SHUTOFF	A	B	D
IN-LINE PIPE THREAD	1/4" NPT 3/8" NPT			EFC10412 EFC10612	.93 .93	2.29 2.29	
BULKHEAD PANEL MOUNT HOSE BARB	1/4" ID 3/8" ID	6.4mm ID 9.5mm ID		EFC16412 EFC16612	.93 .93	2.23 2.23	
IN-LINE HOSE BARB	1/4" ID 3/8" ID	6.4mm ID 9.5mm ID		EFC17412 EFC17612	.93 .93	2.23 2.23	

Coupling Inserts • POLYPROPYLENE

TERMINATION	TUBING/THREAD SIZE	METRIC EQ.	STRAIGHT THRU	SHUTOFF	A	B	D
IN-LINE PIPE THREAD	1/4" NPT 3/8" NPT			EFC24412 EFC24612	.72 .72	1.77 1.77	
IN-LINE HOSE BARB	1/4" ID 3/8" ID	6.4mm ID 9.5mm ID	EFC22412 EFC22612	EFC22412 EFC22612	.60/.72 .60/.72	1.33/2.08 1.33/1.90	
ELBOW HOSE BARB	1/4" ID 3/8" ID	6.4mm ID 9.5mm ID	EFC23412 EFC23612	EFC23412 EFC23612	.63 .63	1.32/1.45 1.32/1.45	.96 .96

All measurements are in inches (millimeters) unless otherwise noted. Tubing must meet stated inside and outside diameters. MBLK = molded black material.

Accessories

DESCRIPTION

PANEL MOUNT GASKET REPLACEMENT

For sealing panel mount bodies listed above

MATERIAL

Buna-N

PART NO.

1830300



iq
parts
IQ-PARTS-SHOP.COM

info@iq-parts.nl
Harsweg 34A
2461 EZ Ter Aar
T +31 252 624 126
The Netherlands